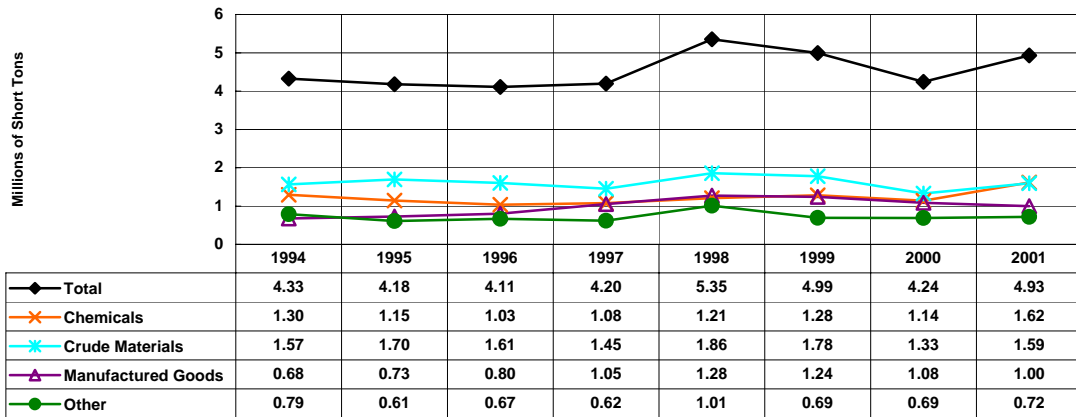
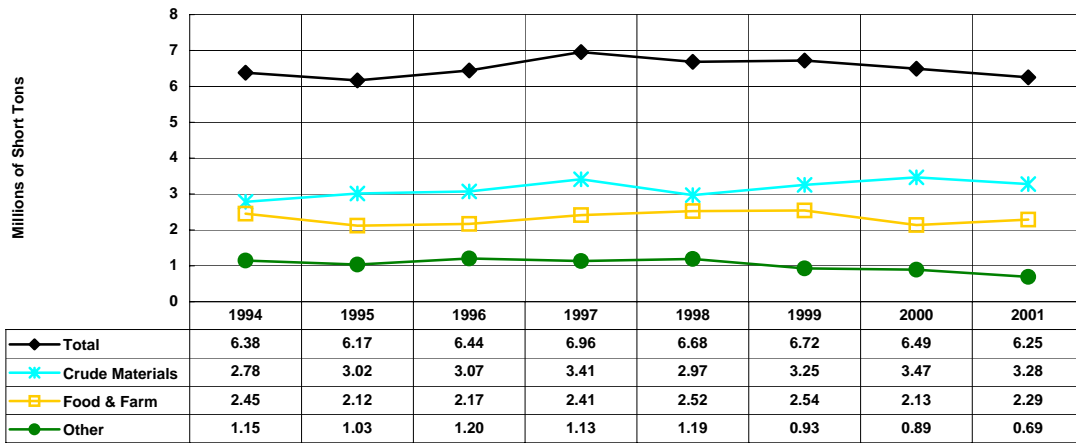


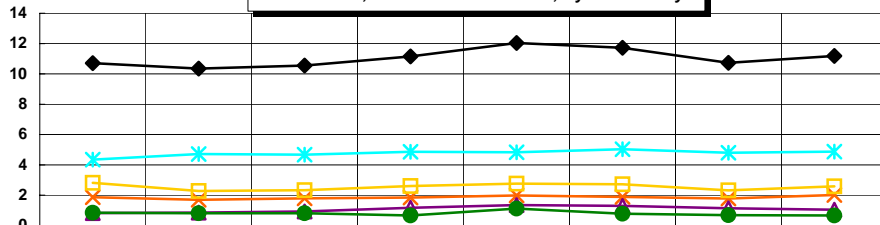
**McClellan-Kerr Waterway - Upbound**  
1994-2001\*, Millions of Short Tons, By Commodity



**McClellan-Kerr Waterway - Downbound**  
1994-2001\*, Millions of Short Tons, By Commodity



**McClellan-Kerr Waterways - Totals**  
1994-2001\*, Millions of Short Tons, By Commodity



\*Preliminary as of September 3, 2002.