

**Preliminary  
Waterborne Commerce Statistics**

**For Calendar Year 2016**

**Waterborne Commerce National Totals  
And  
Selected Inland Waterways  
For Multiple Years**

**Institute for Water Resources  
Navigation and Civil Works Decision Support Center**

**U.S. Army Corps of Engineers**

**Waterborne Commerce Statistics Center  
August 1, 2017**

## Introduction

In order to provide waterborne commerce information as soon as possible, the Waterborne Commerce Statistics Center (WCSC) has prepared this summary document of preliminary waterborne commerce statistics for calendar year 2016. The foreign inbound and outbound data is preliminary import, export, and inbound/outbound in-transit data. The domestic national totals are based on calendar year 2016 data collected from vessel operating companies. Both the foreign and domestic data are subject to correction and will differ slightly from the final figures to be released later.

All graphs and tables (except page 1) show domestic tonnages (short tons). All graphs after page 1 include all internal tonnage, which is tonnage moving exclusively on waterways within the boundaries of the United States. The deep-draft sections of the Mississippi, the Columbia and the Gulf Intracoastal Waterway include domestic coastwise data as well. This coastwise tonnage travels on these internal waterways and also Coastwise (the oceans or the Gulf of Mexico). All the data for the current year (2016) is preliminary. The data of prior years are the final figures. Also, please note that rounding may result in commodity tonnages that do not add up to the totals for a waterway.

WCSC is also using the Internet to expedite release of statistics. Please visit our World Wide Web home page at:

<http://www.navigationdatacenter.us/>

There you will find the timeliest WCSC statistics including this report, port rankings, container information, and our monthly internal traffic indicators.

Questions or comments may be communicated to:

Waterborne Commerce Statistics Center, USACE  
P. O. Box 61280  
New Orleans, LA 70161-1280  
Telephone: (504) 862-1426  
(504) 862-1441  
Fax No.: (504) 862-1423  
E-Mail: CEIWR-NDCWCSC.WEBMASTER@usace.army.mil

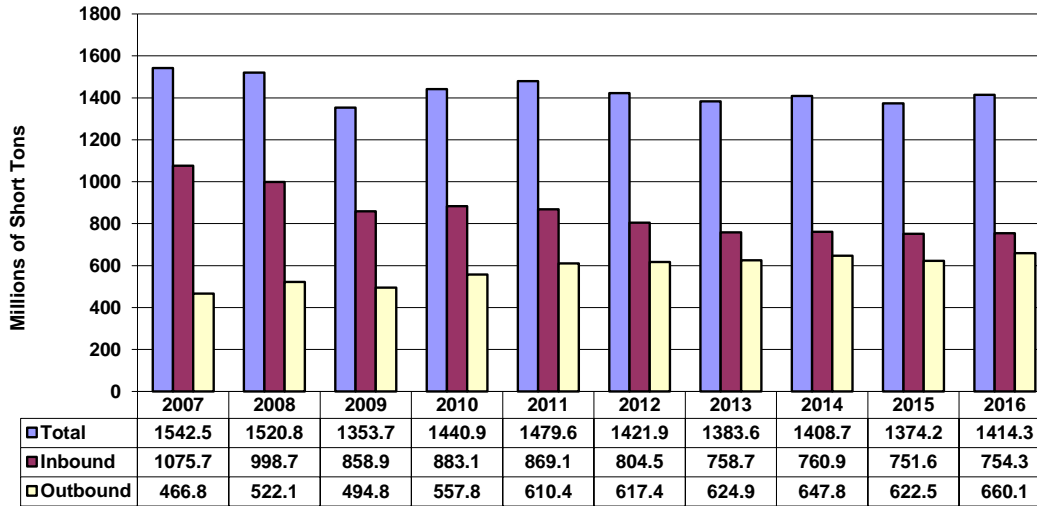
## Table of Contents

Table/Graph	Page
Introduction	i
Table of Contents	ii
Explanation of Commodity Groups	iii
Foreign Waterborne Inbound and Outbound Traffic (2007-2016)	1
Domestic Waterborne Commerce of the U.S. – By Type Traffic (2007-2016)	1
Internal Waterways Tonnage Comparisons: 2016 vs 2015	2
Internal Waterways Tonnage Comparisons: Graph of Percent Change	3
National Internal Commodities	4
Total of Selected Waterways (2007-2016)	5
Allegheny River	6
Atchafalaya River	8
Atlantic Intracoastal Waterway	10
Big Sandy River	12
Black Warrior and Tombigbee Rivers	14
Columbia River	16
Cumberland River	18
Gulf Intracoastal Waterway	20
Illinois Waterway	22
Kanawha River	24
McClellan-Kerr Waterway	26
Mississippi River	28
Missouri River	30
Monongahela River	32
Ohio River	34
Snake River	36
Tennessee River	38
Tennessee-Tombigbee Waterway	40

## Explanation of Commodity Groups

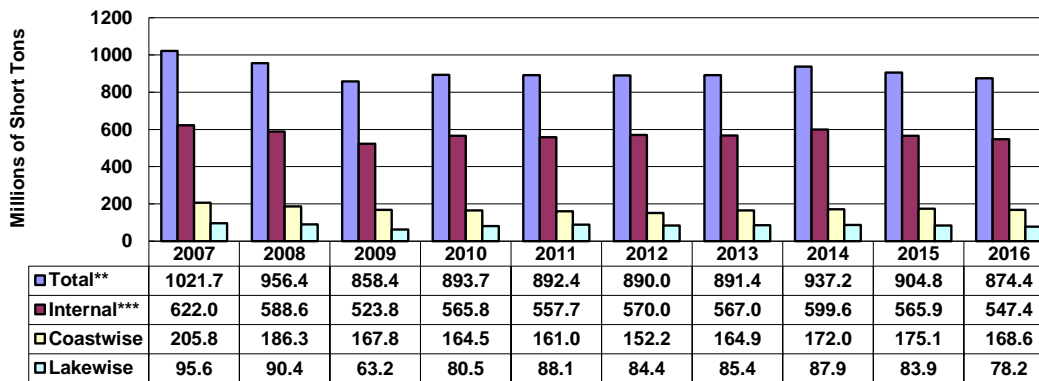
Coal:	Coal, lignite, and coke
Petro & Petro Products:	Petroleum and Petroleum Products
Chemicals:	Chemicals and fertilizers
Crude Materials:	Crude materials, inedible, such as: forest products, pulp, sand, gravel, stone, iron ore, marine shells, non-ferrous metallic ores, and sulphur
Manufactured Goods:	Primary manufactured goods, such as: paper and allied products, concrete, iron, steel, non-ferrous metals, and wood products
Food and Farm:	Food, grain, and farm products
Manufactured Equipment:	All manufactured equipment
Waste material:	Waste material, such as: garbage, landfill, sewage sludge, and waste water.
Other:	Commodity group not specifically listed in a table. (This will differ from table to table).

**Foreign Waterborne Inbound and Outbound Traffic**  
2007-2016\*, Millions of Short Tons



\*Preliminary as of August 1, 2017.

**Domestic Waterborne Commerce of the U.S.**  
2007-2016\*, Millions of Short Tons, by Type of Traffic



\*Preliminary as of August 1, 2017.

\*\*Total also includes Intraport and Intra-territory traffic.

\*\*\*Total Internal excludes waterway improvement materials.

## Domestic U.S. Waterborne Traffic

Annual Tonnage Comparisons: 2016\* VS 2015

Millions of Short Tons

	CY15	CY16*	Percent Change
<b>National Totals**</b>			
Domestic	904.8	874.4	-3.36%
Lakewise	83.9	78.2	-6.80%
Coastwise	175.1	168.6	-3.72%
Intraport	78.3	78.9	0.82%
Intra-territory	1.6	1.3	-20.65%
Internal	565.9	547.4	-3.27%

### National Internal Commodities

Coal	126.2	109.8	-13.00%
Petroleum	162.8	157.6	-3.17%
Chemicals	50.9	52.3	2.80%
Crude Materials	100.0	96.3	-3.77%
Manufactured Goods	28.6	26.6	-6.97%
Food and Farm	89.7	97.2	8.37%
Manufactured Equipment	6.8	6.8	-0.10%
Other	1.0	0.9	-8.08%

### Waterways

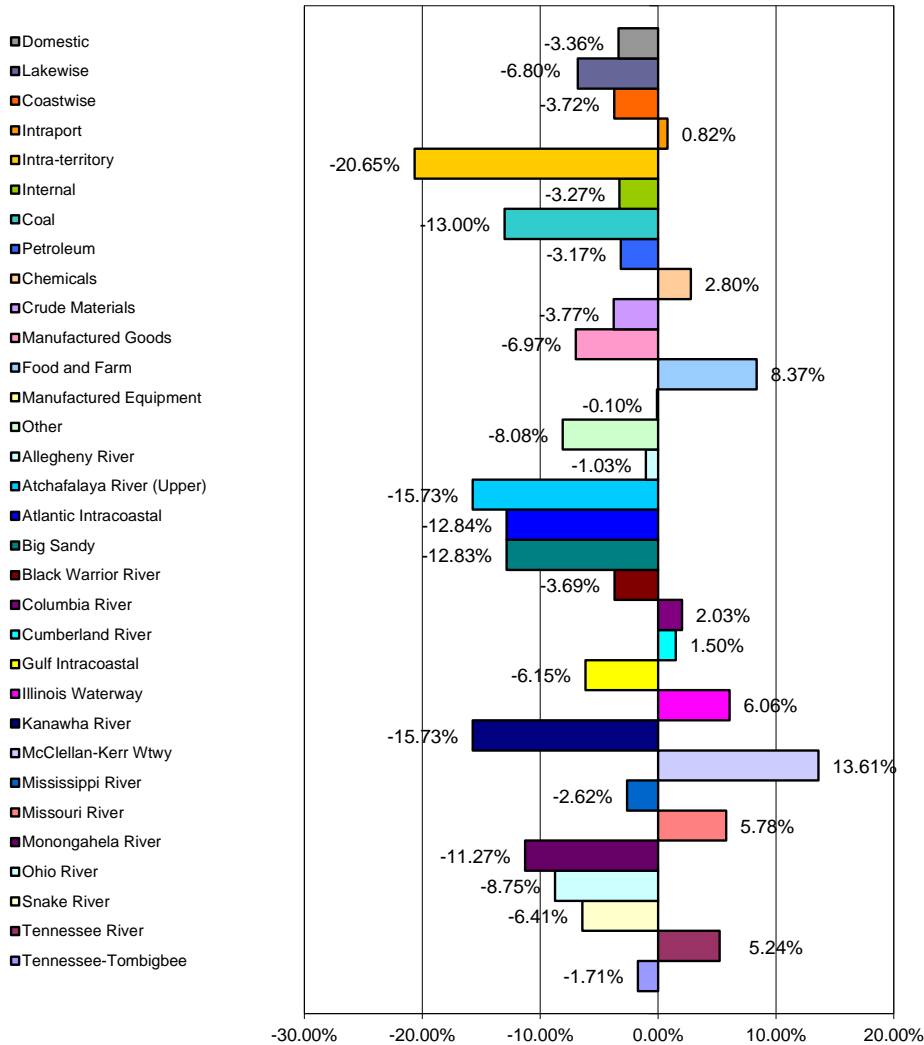
Allegheny River	0.7	0.7	-1.03%
Atchafalaya River (Upper)	10.9	9.1	-15.73%
Atlantic Intracoastal	2.6	2.2	-12.84%
Big Sandy	6.1	5.3	-12.83%
Black Warrior River	18.4	17.7	-3.69%
Columbia River***	13.5	13.8	2.03%
Cumberland River	21.8	22.1	1.50%
Gulf Intracoastal***	118.9	111.6	-6.15%
Illinois Waterway	35.5	37.6	6.06%
Kanawha River	13.9	11.7	-15.73%
McClellan-Kerr Wtwy	10.2	11.6	13.61%
Mississippi River***	315.8	307.5	-2.62%
Missouri River	4.4	4.7	5.78%
Monongahela River	16.3	14.5	-11.27%
Ohio River	201.4	183.8	-8.75%
Snake River	3.6	3.4	-6.41%
Tennessee River	35.8	37.7	5.24%
Tennessee Tombigbee	8.1	7.9	-1.71%

\* Preliminary as of August 1, 2017.

\*\*All National Totals exclude waterway improvement materials.

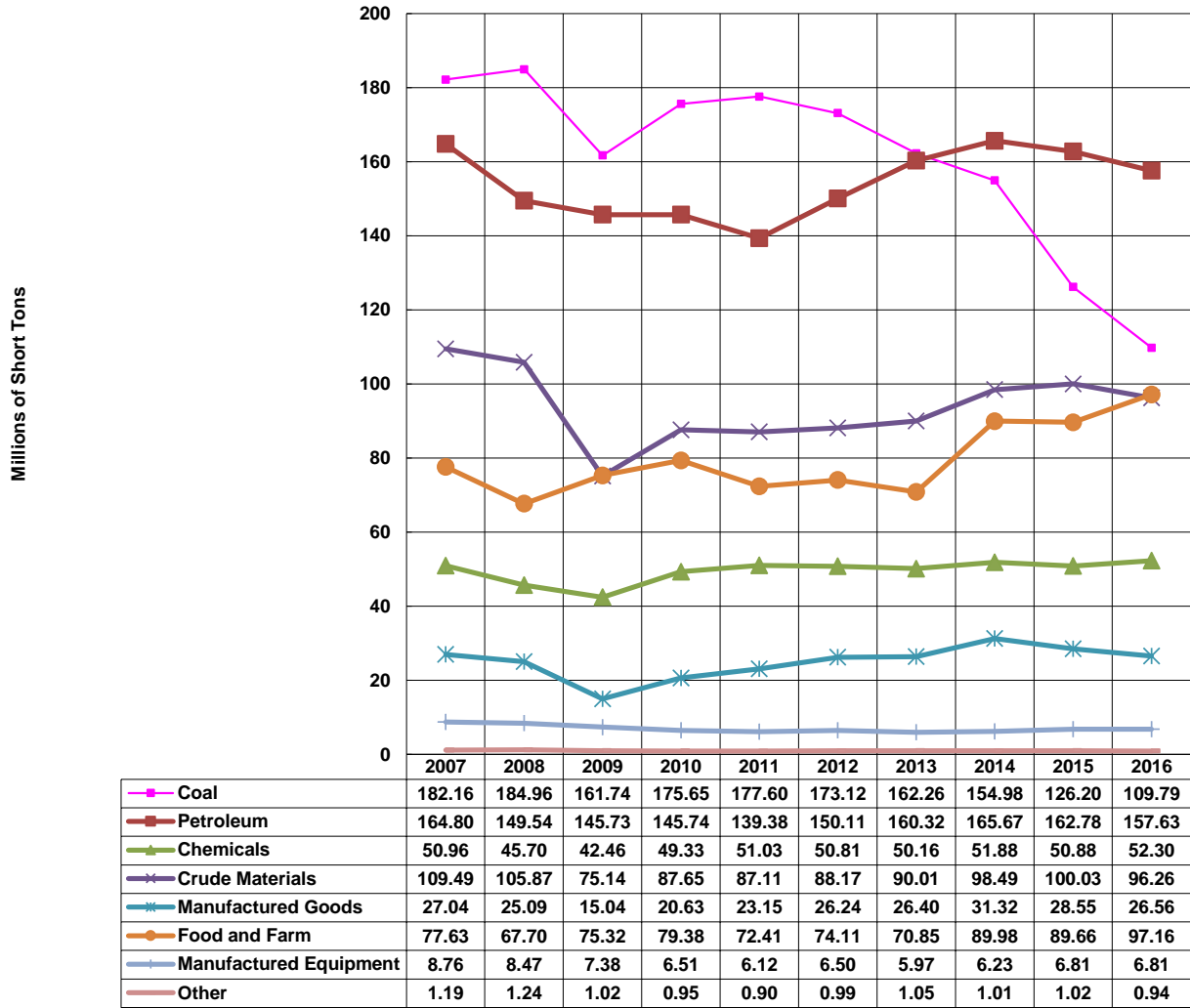
\*\*\*Includes domestic coastwise tonnage.

## Domestic U.S. Waterborne Traffic Tonnage Comparisons: 2016\* vs. 2015



\*Preliminary as of August 1, 2017.  
Waterway improvement materials excluded from National Totals.

## National Internal Commodities 2007-2016\*, Millions of Short Tons, By Commodity

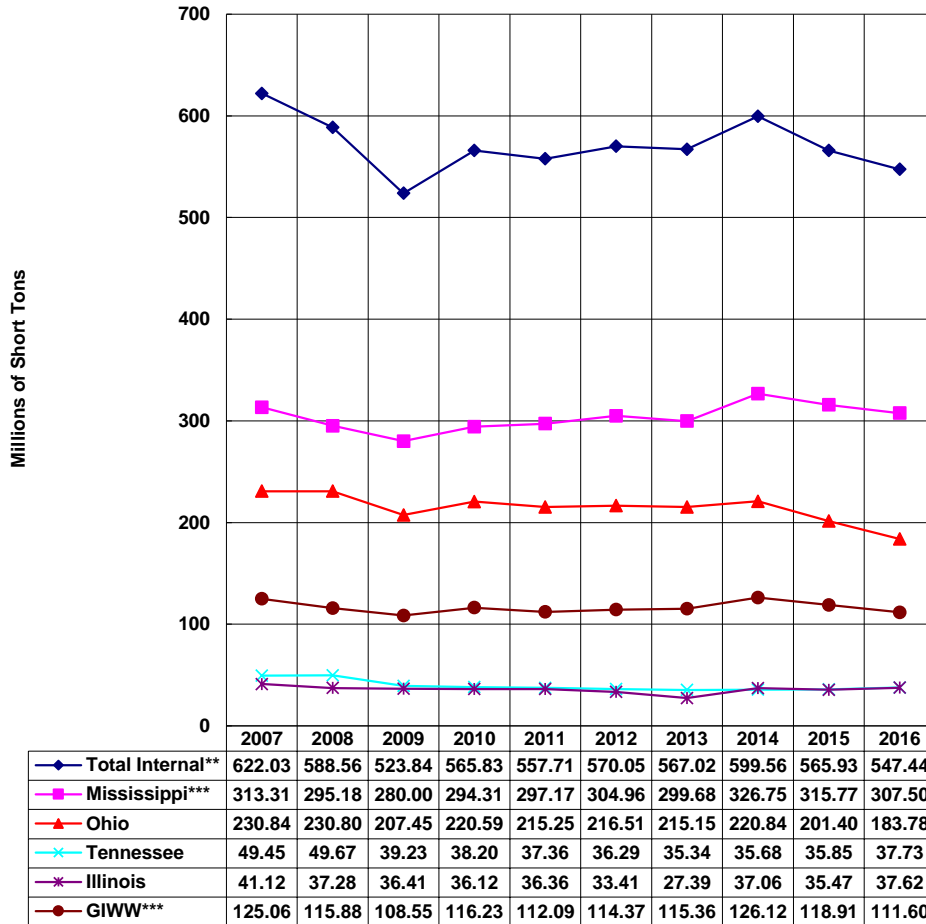


\*Preliminary as of August 1, 2017.



## Commerce on Selected Waterways

Internal Traffic, 2007-2016\*

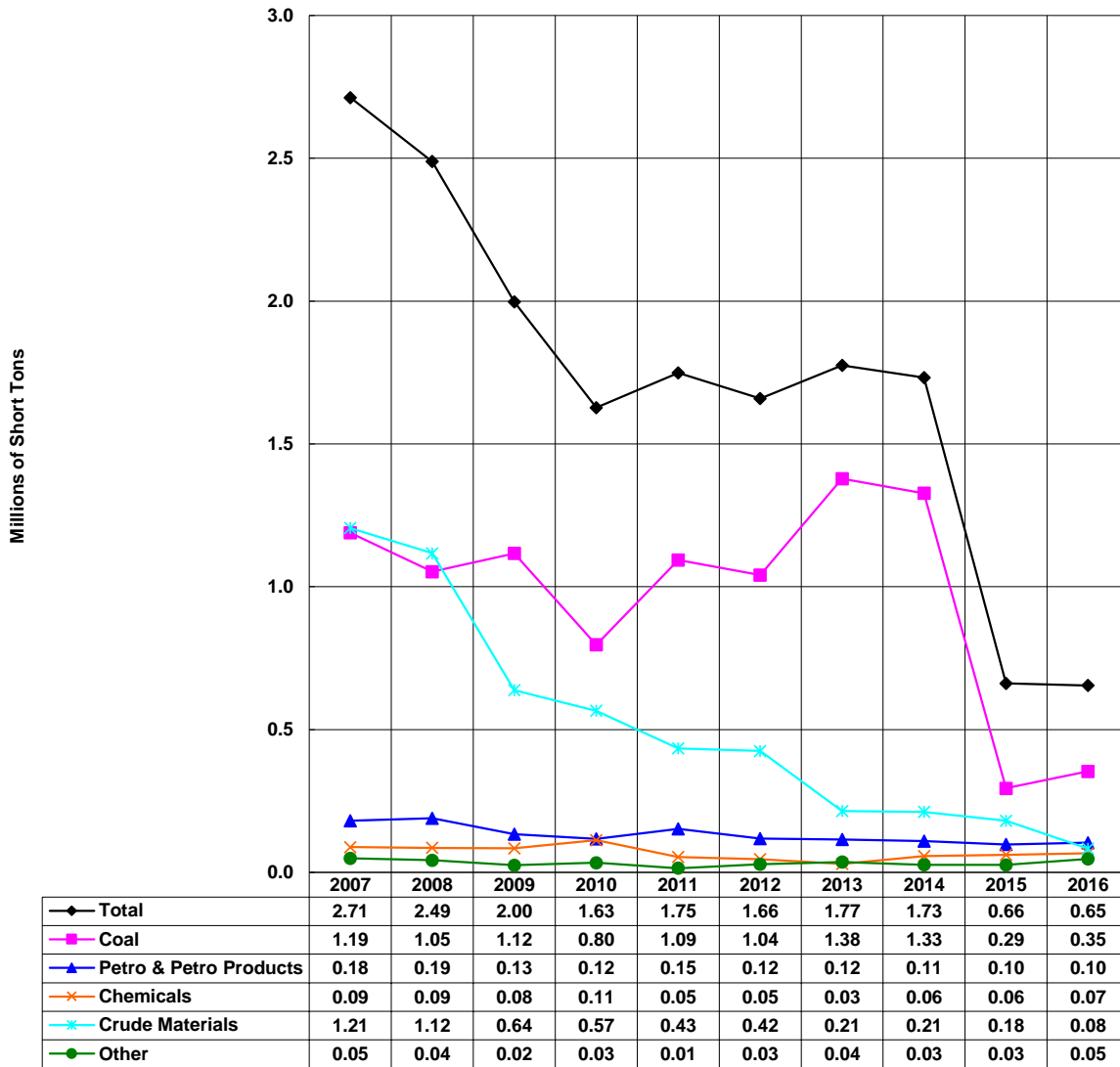


\*Preliminary as of August 1, 2017.

\*\*Total Internal excludes waterway improvement materials.

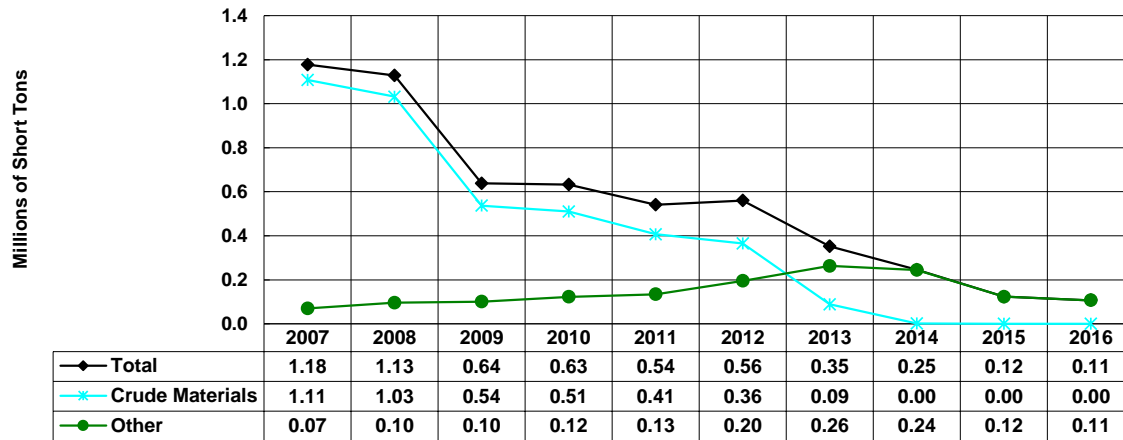
\*\*\*Includes domestic coastwise tonnage.

**Allegheny River - Totals**  
2007-2016\*, Millions of Short Tons, By Commodity



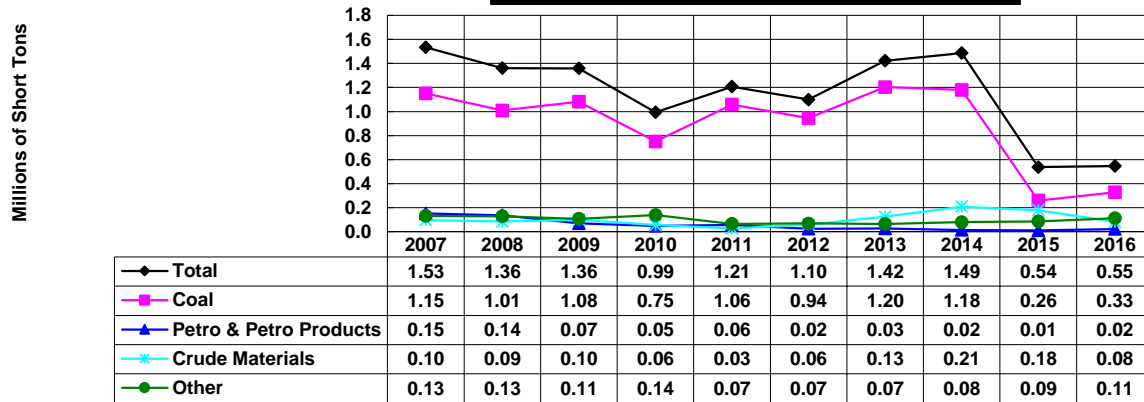
\*Preliminary as of August 1, 2017.

### Allegheny River - Downbound 2007-2016\*, Millions of Short Tons, By Commodity



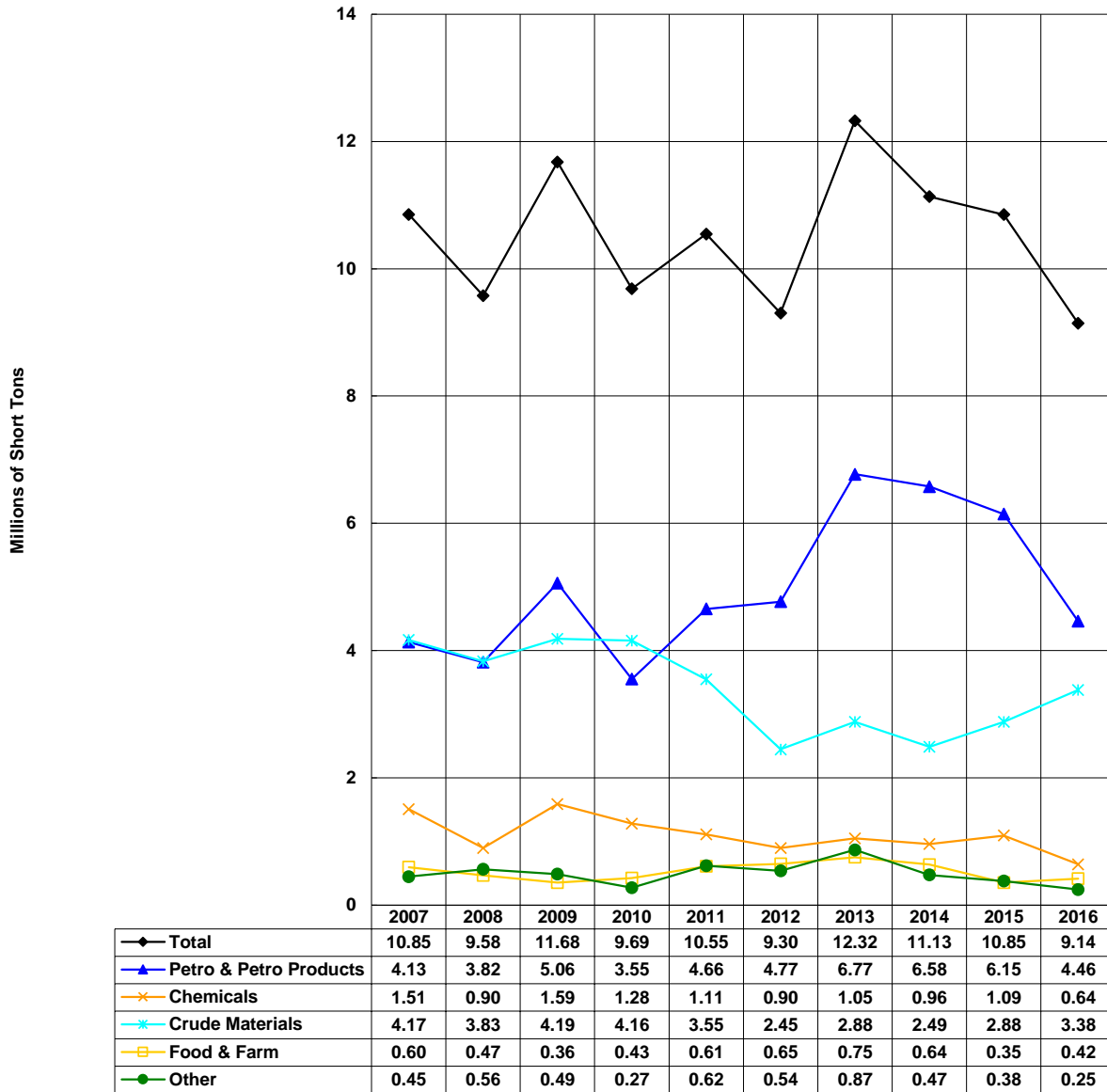
\*Preliminary as of August 1, 2017.

### Allegheny River - Upbound 2007-2016\*, Millions of Short Tons, By Commodity



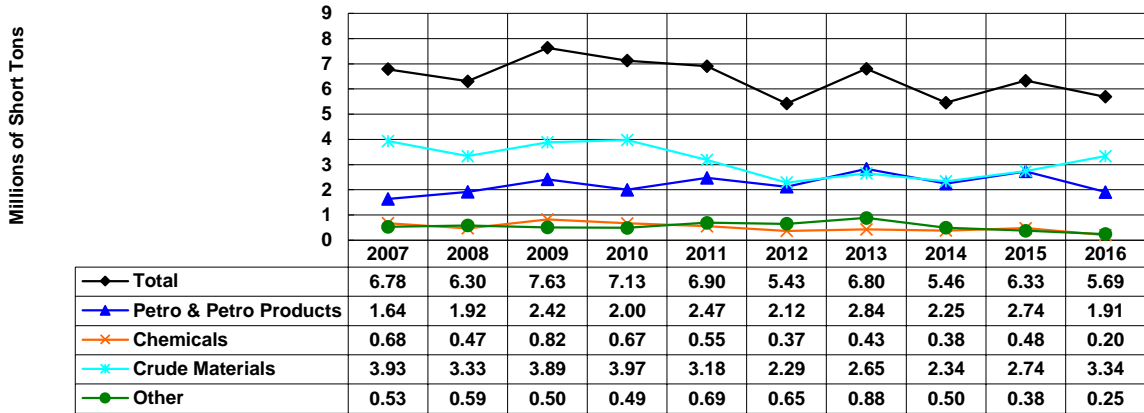
\*Preliminary as of August 1, 2017.

**Upper Atchafalaya River - Totals**  
 2007-2016\*, Millions of Short Tons, By Commodity



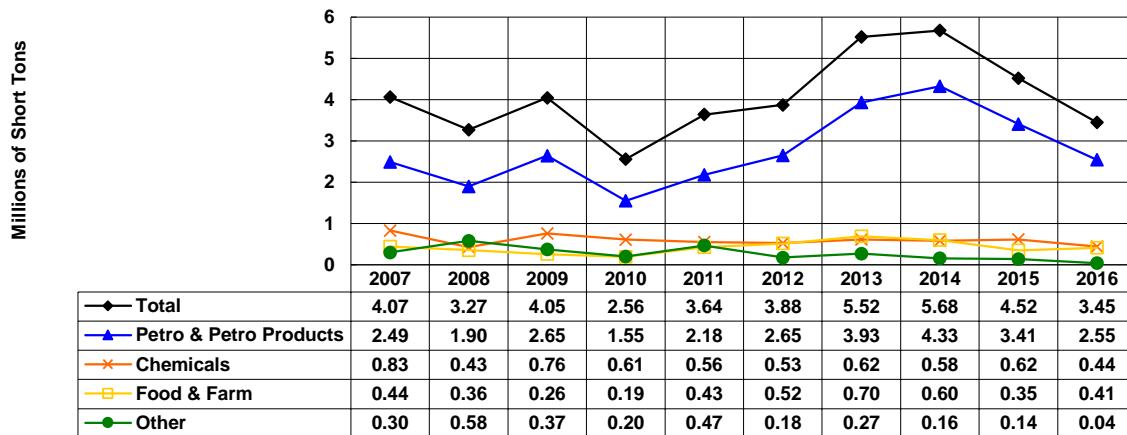
\*Preliminary as of August 1, 2017.

### Upper Atchafalaya River - Downbound 2007-2016\*, Millions of Short Tons, By Commodity



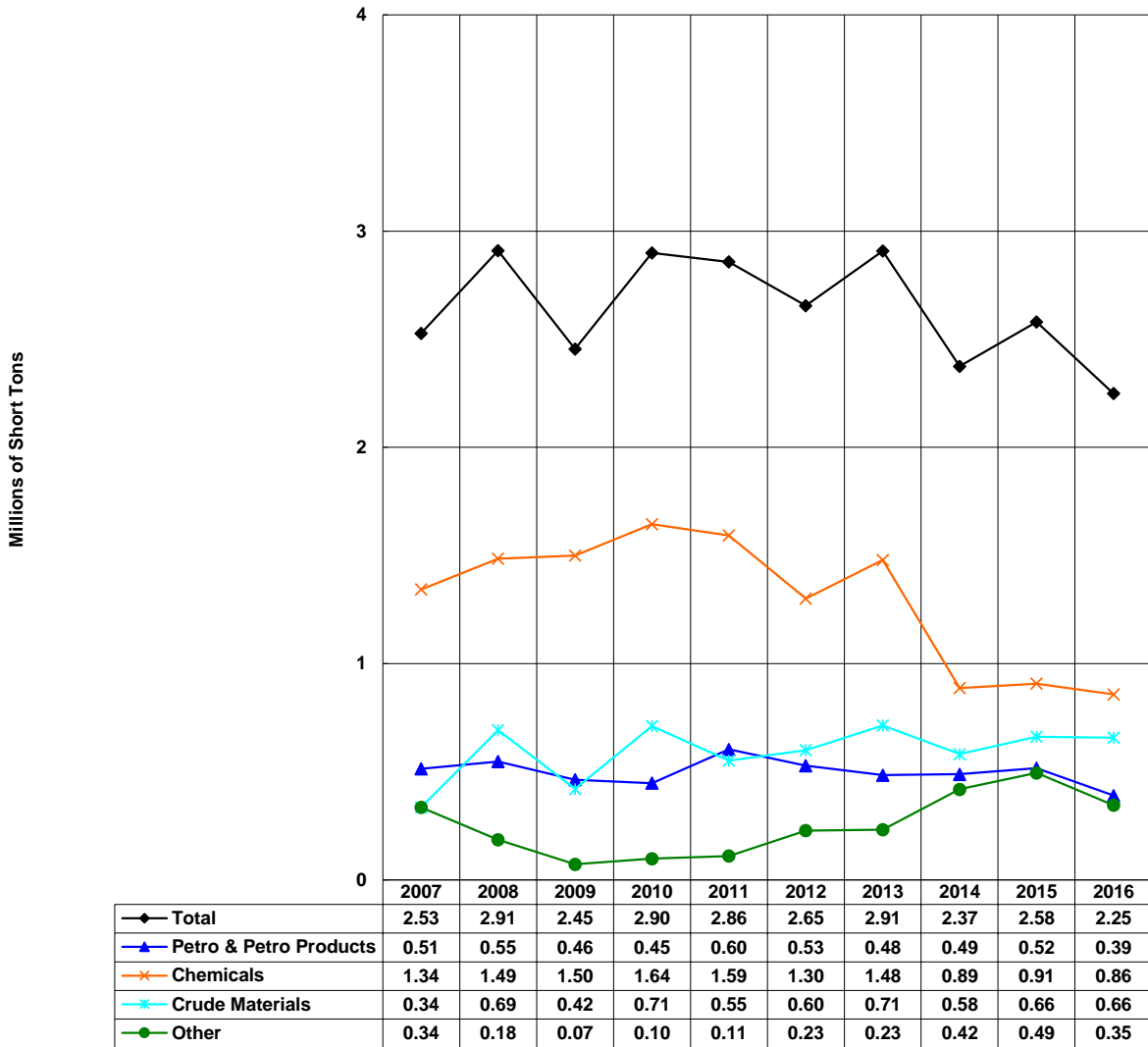
\*Preliminary as of August 1, 2017.

### Upper Atchafalaya River - Upbound 2007-2016\*, Millions of Short Tons, By Commodity



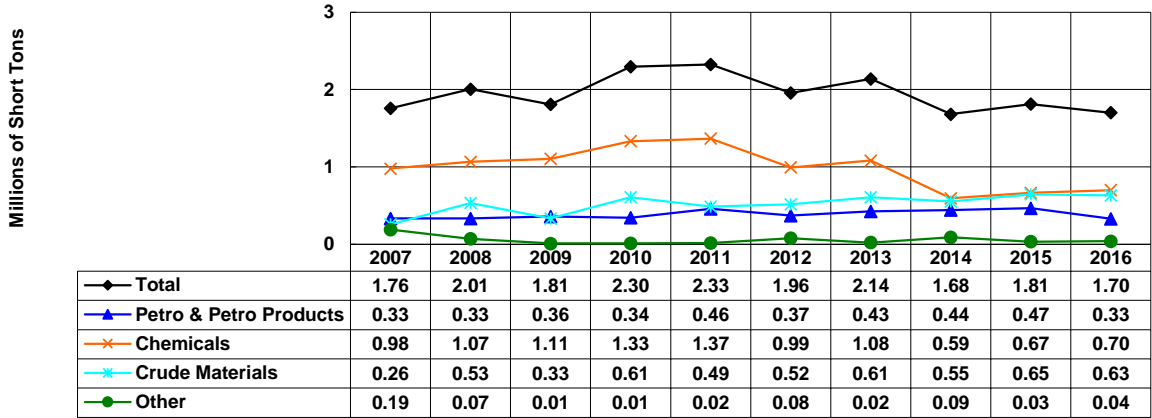
\*Preliminary as of August 1, 2017.

### Atlantic Intracoastal Waterway Totals 2007-2016\*, Millions of Short Tons, By Commodity



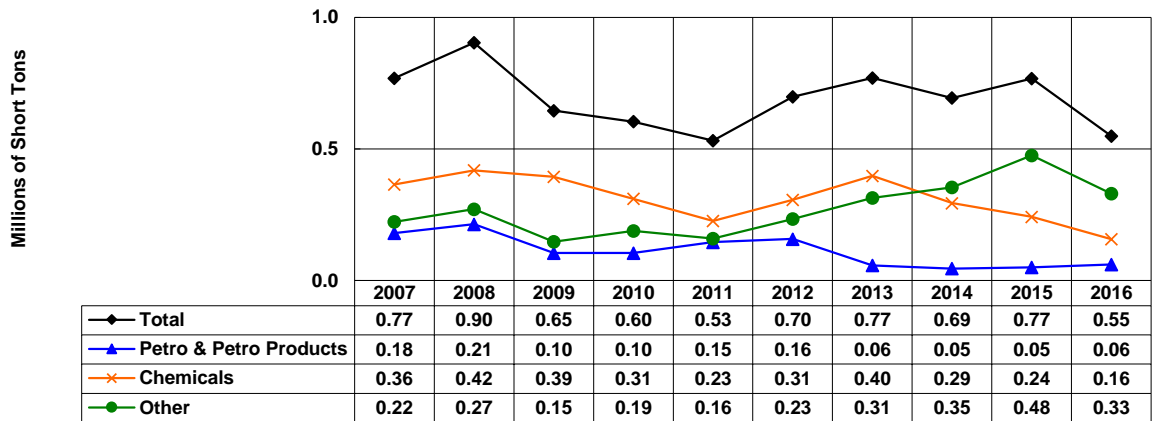
\*Preliminary as of August 1, 2017.

**Atlantic Intracoastal Waterway**  
**Southbound 2007-2016\*, Millions of Short Tons, By Commodity**



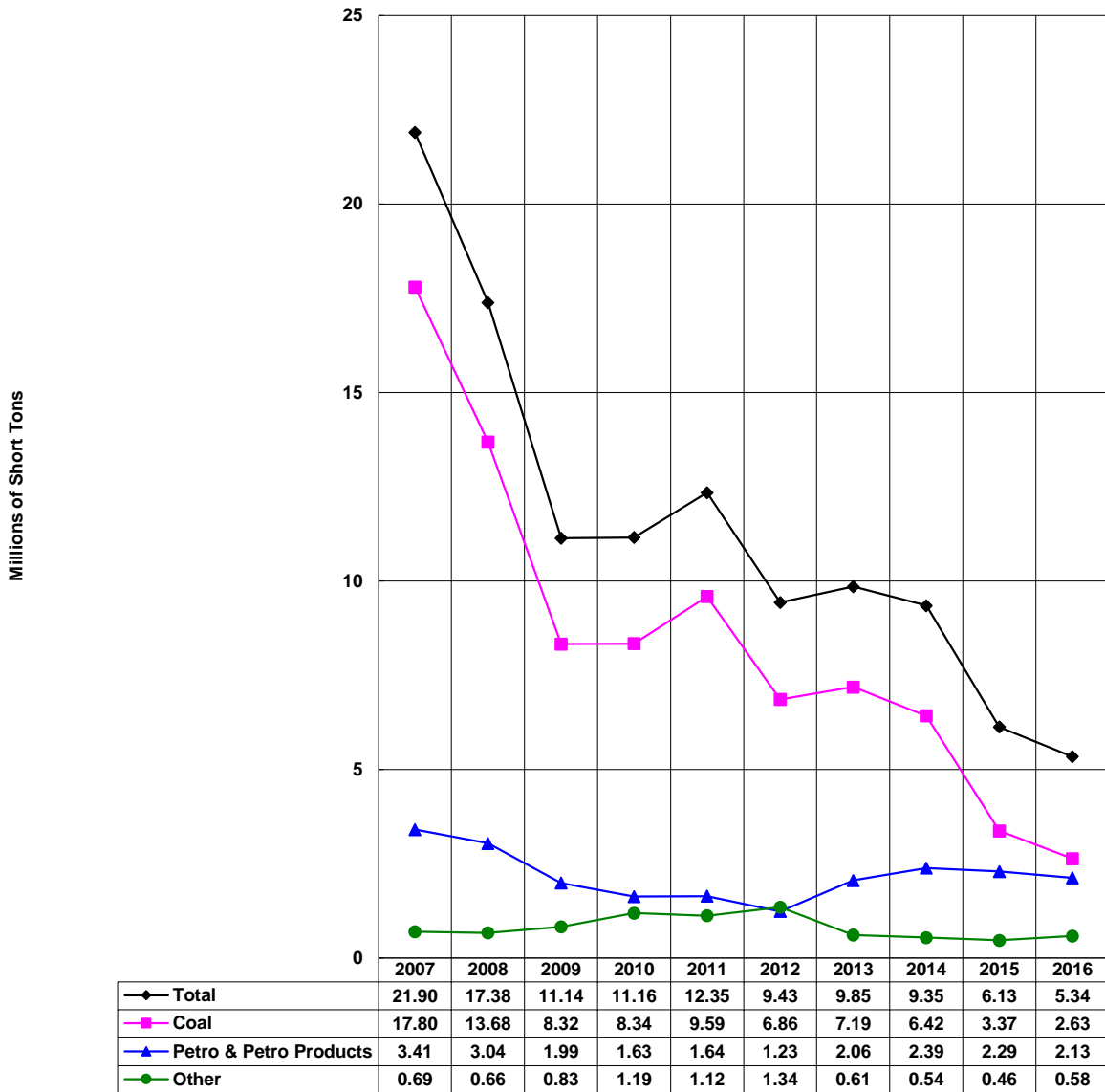
\*Preliminary as of August 1, 2017.

**Atlantic Intracoastal Waterway**  
**Northbound 2007-2016\*, Millions of Short Tons, By Commodity**



\*Preliminary as of August 1, 2017.

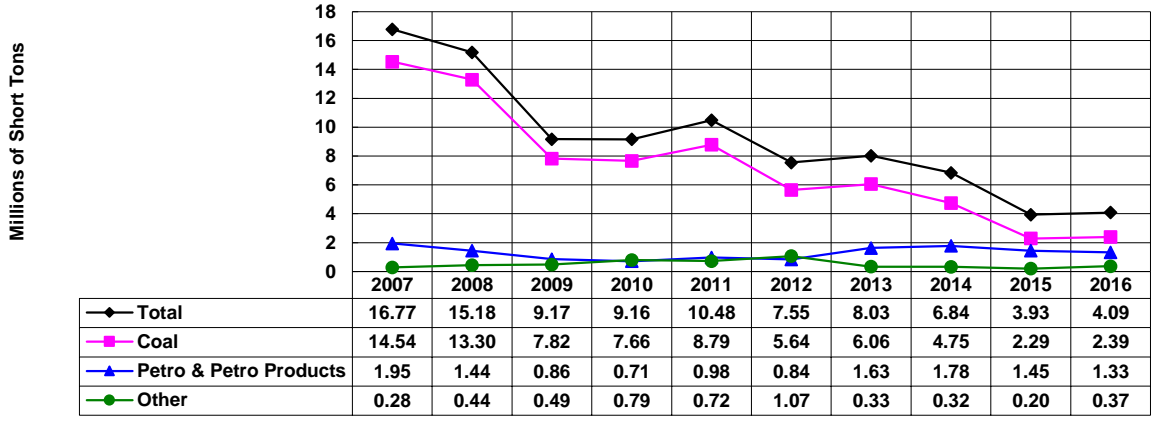
**Big Sandy River - Totals**  
2007-2016\*, Millions of Short Tons, By Commodity



\*Preliminary as of August 1, 2017.

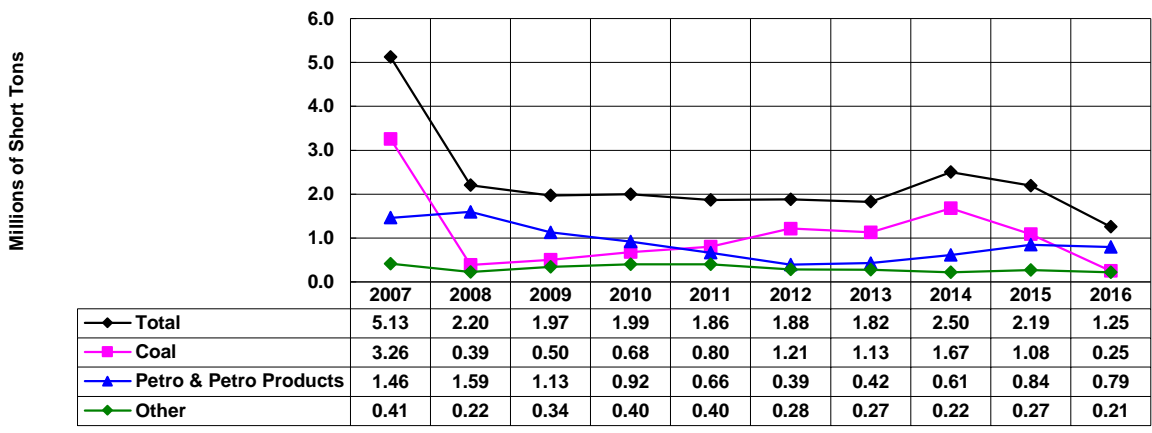


**Big Sandy River - Downbound**  
2007-2016\*, Millions of Short Tons, By Commodity



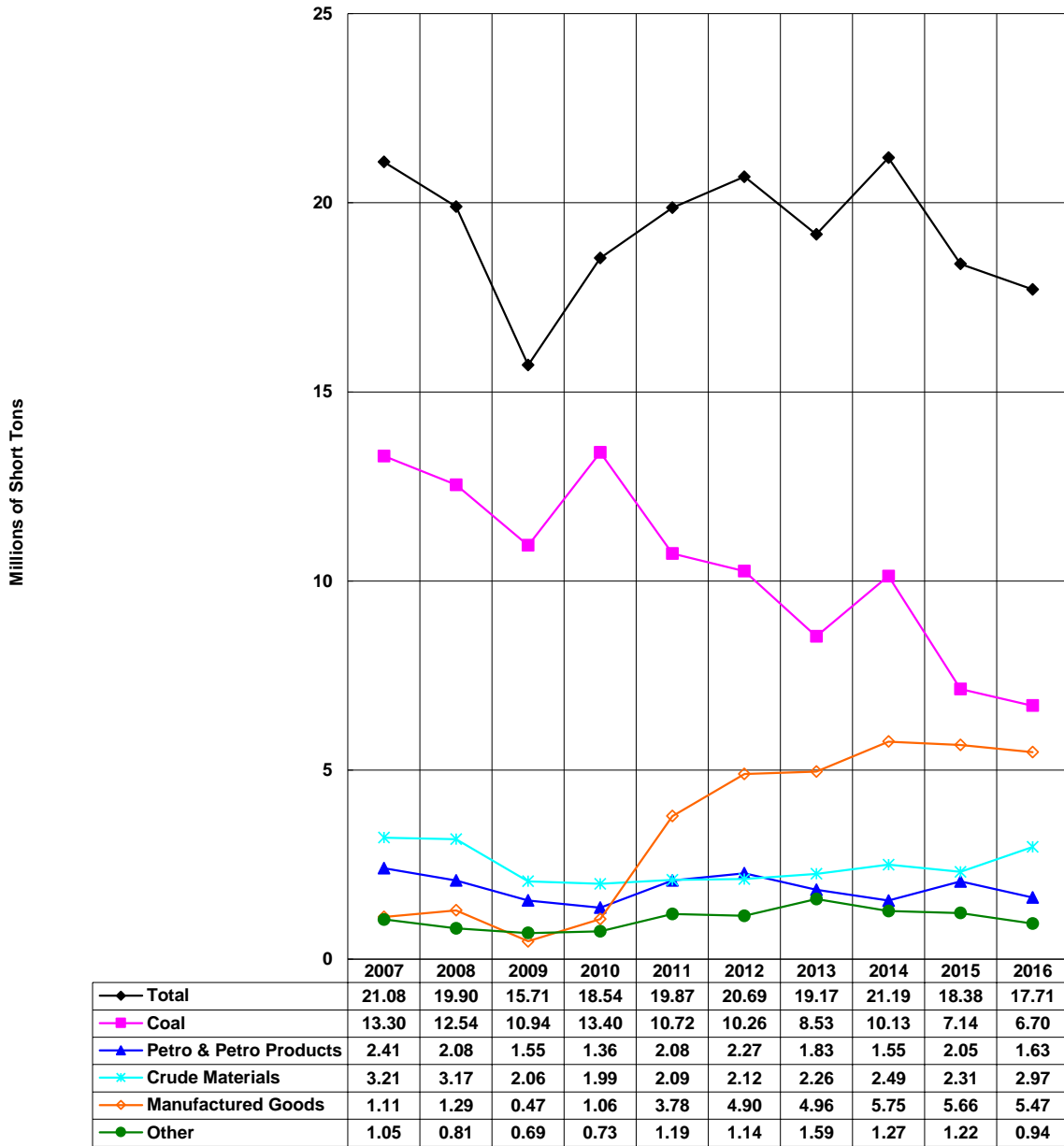
\*Preliminary as of August 1, 2017.

**Big Sandy River - Upbound**  
2007-2016\*, Millions of Short Tons, By Commodity



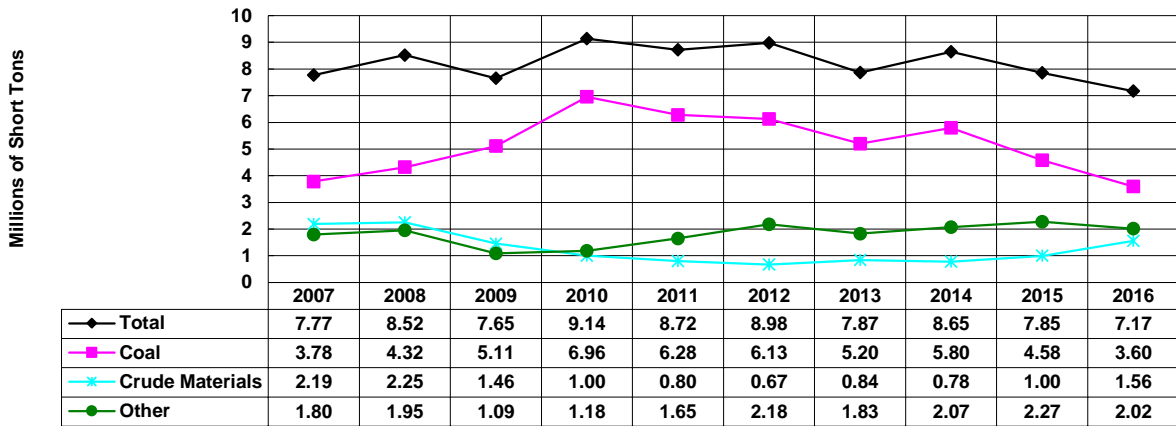
\*Preliminary as of August 1, 2017.

**Black Warrior & Tombigbee Rivers Totals**  
2007-2016\*, Millions of Short Tons, By Commodity



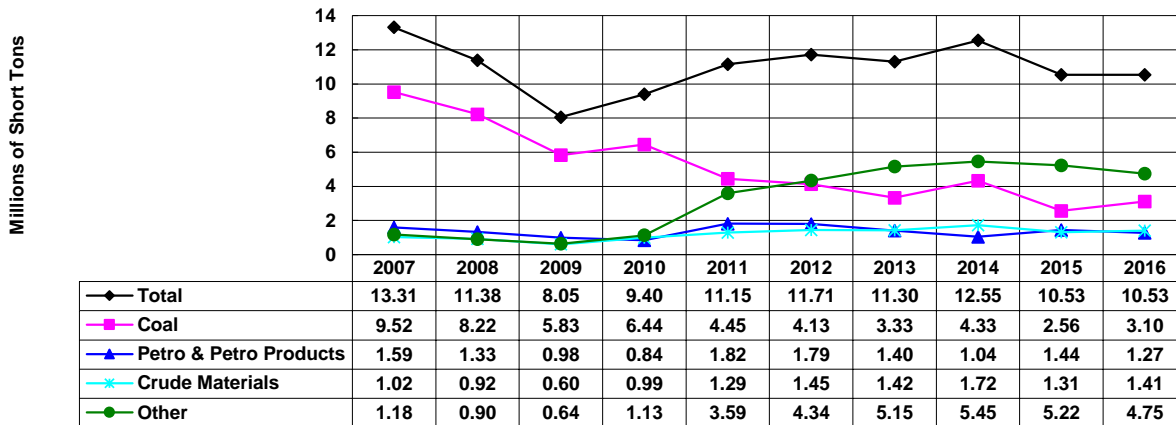
\*Preliminary as of August 1, 2017.

**Black Warrior & Tombigbee Rivers**  
Downbound, 2007-2016\*, Millions of Short Tons, By Commodity



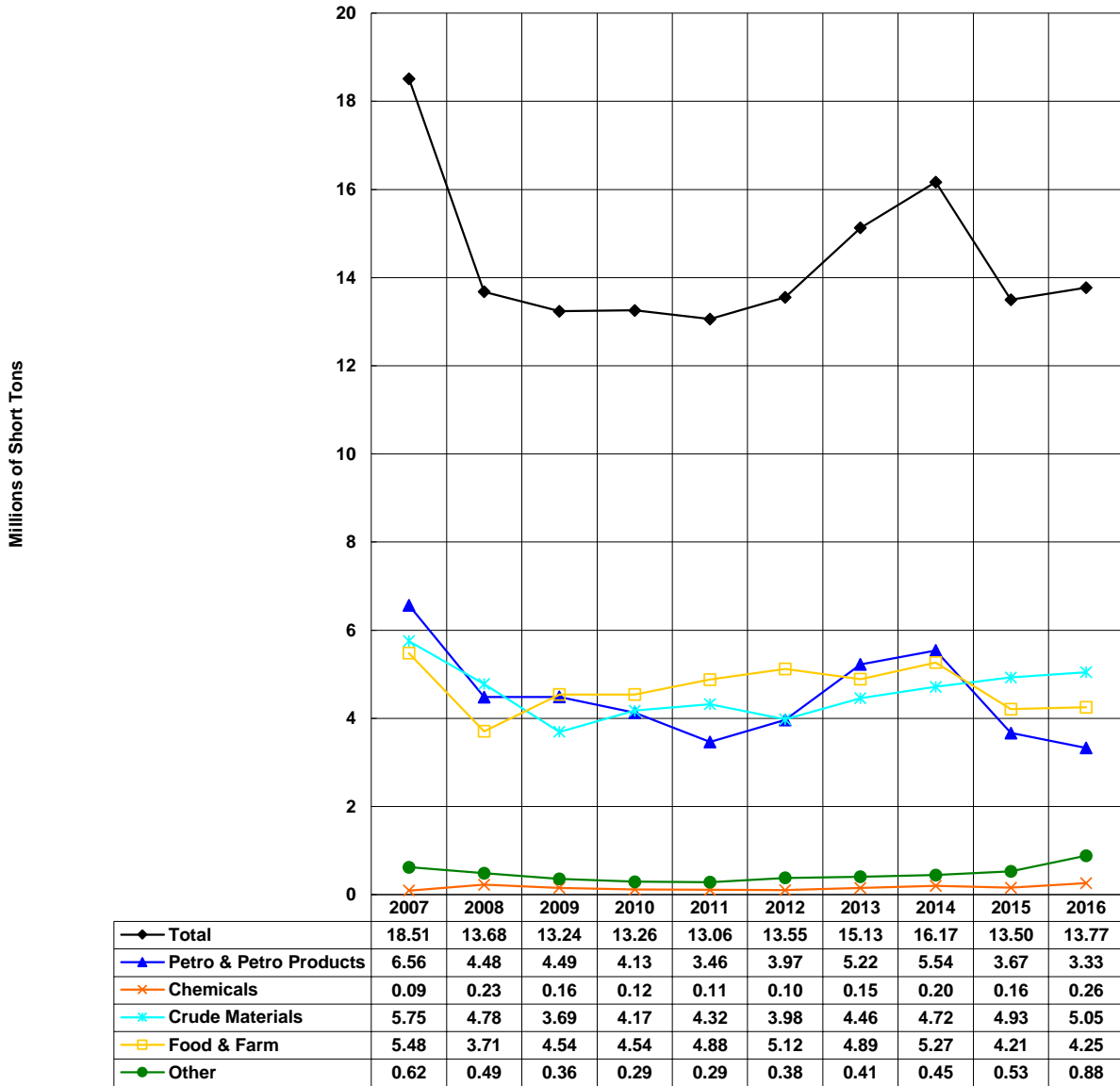
\*Preliminary as of August 1, 2017.

**Black Warrior & Tombigbee Rivers**  
Upbound, 2007-2016\*, Millions of Short Tons, By Commodity



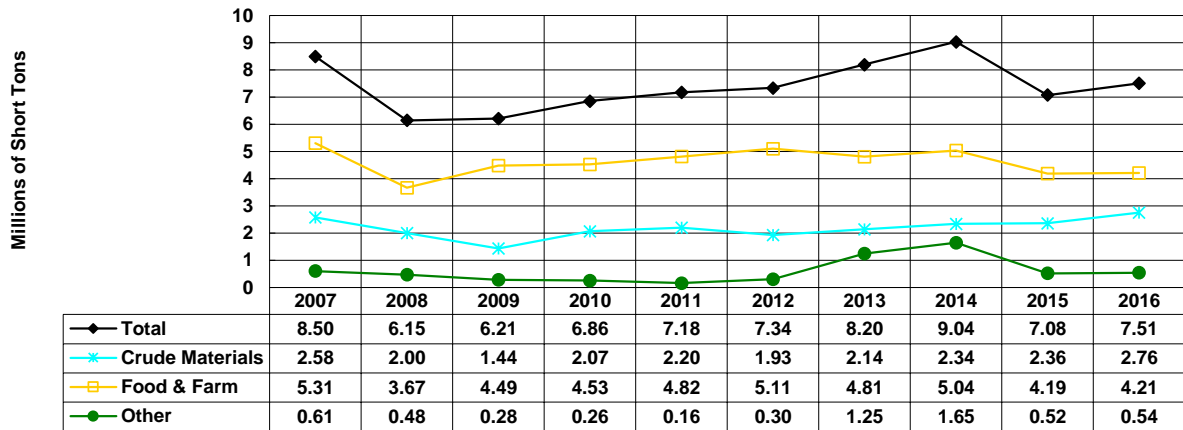
\*Preliminary as of August 1, 2017.

**Columbia River - Totals**  
2007-2016\*, Millions of Short Tons, By Commodity



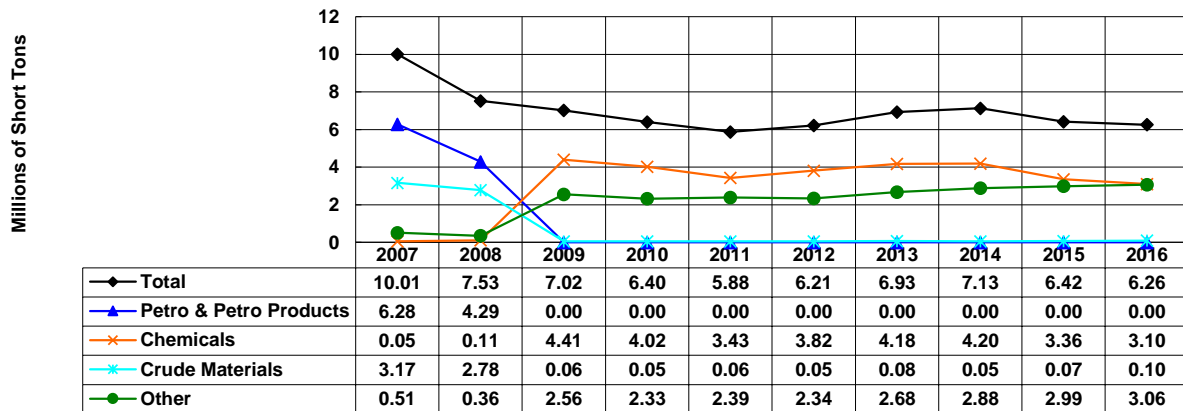
\*Preliminary as of August 1, 2017.  
Domestic tonnage only (including coastwise).

**Columbia River - Downbound**  
2007-2016\*, Millions of Short Tons, By Commodity



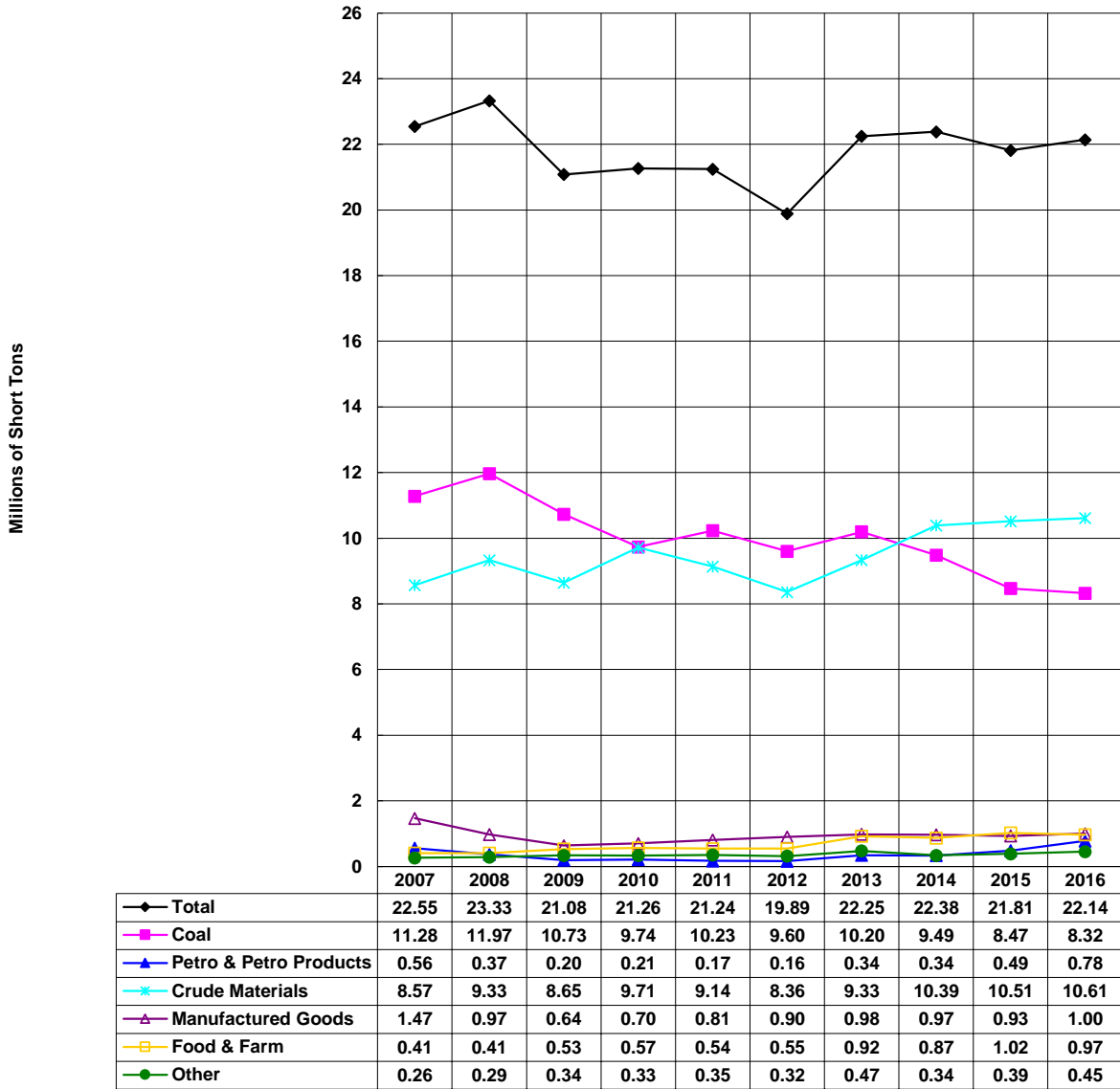
\*Preliminary as of August 1, 2017.  
Domestic tonnage only (including coastwise).

**Columbia River - Upbound**  
2007-2016\*, Millions of Short Tons, By Commodity



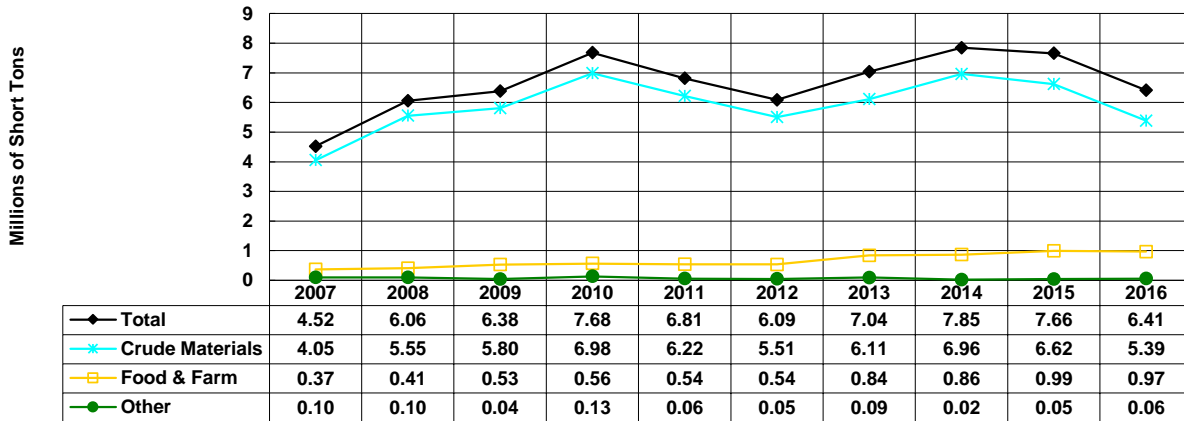
\*Preliminary as of August 1, 2017.  
Domestic tonnage only (including coastwise).

**Cumberland River - Totals**  
 2007-2016\*, Millions of Short Tons, By Commodity



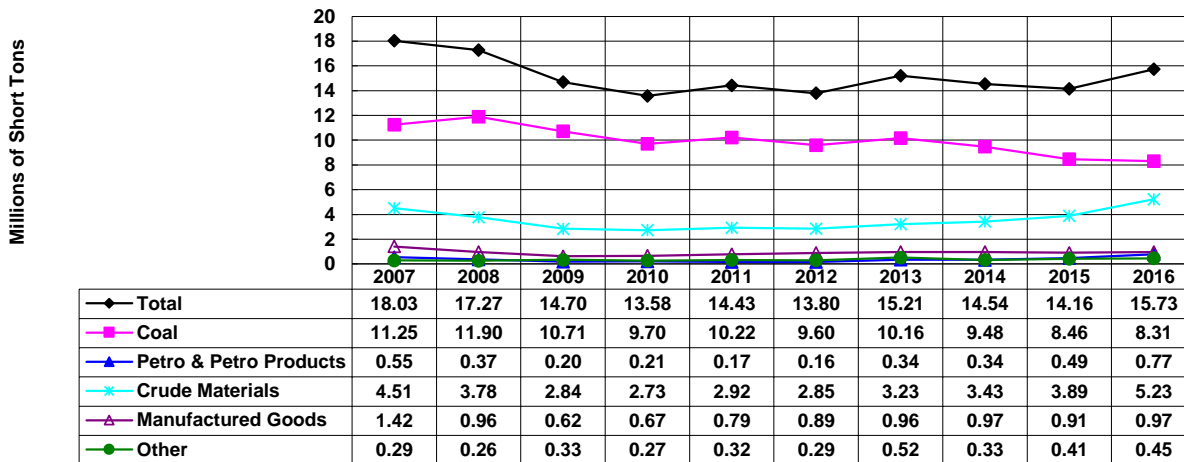
\*Preliminary as of August 1, 2017.

### Cumberland River - Downbound 2007-2016\*, Millions of Short Tons, By Commodity



\*Preliminary as of August 1, 2017.

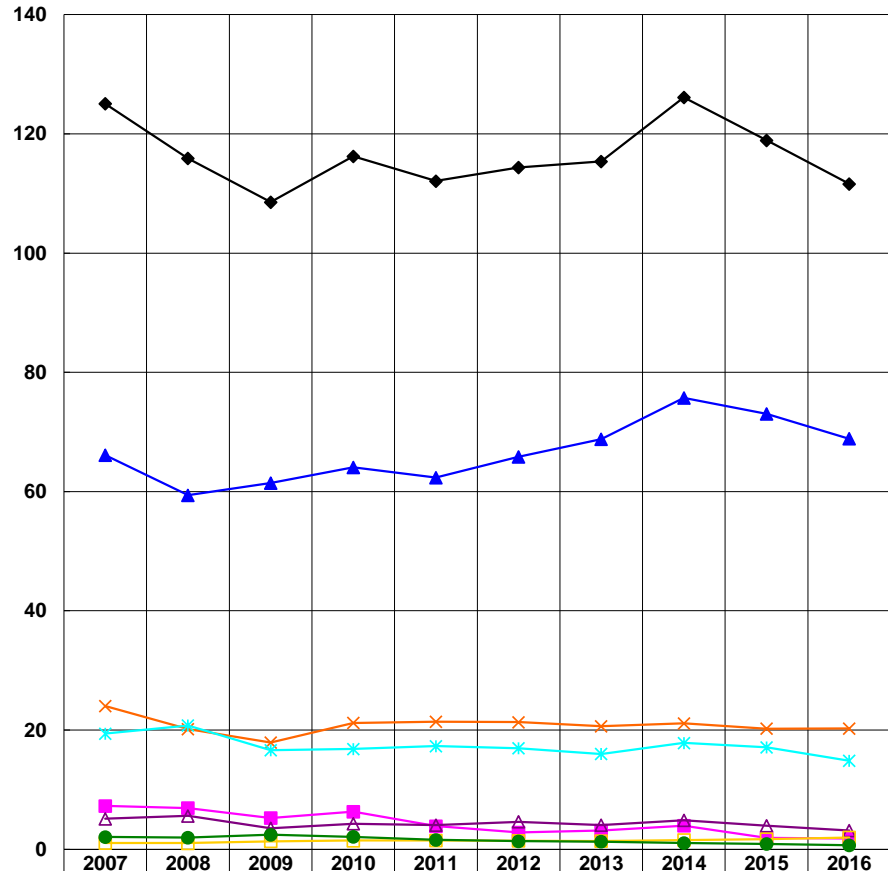
### Cumberland River - Upbound 2007-2016\*, Millions of Short Tons, By Commodity



\*Preliminary as of August 1, 2017.

### Gulf Intracoastal Waterway Totals 2007-2016\*, Millions of Short Tons, By Commodity

Millions of Short Tons

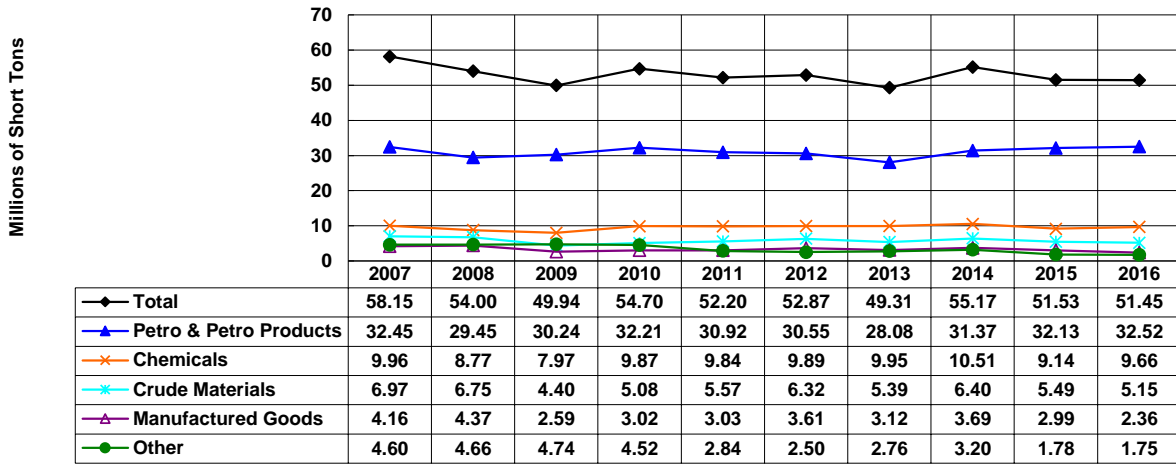


◆ Total	125.06	115.88	108.55	116.23	112.09	114.37	115.36	126.12	118.91	111.60
■ Coal	7.26	6.92	5.25	6.32	3.89	2.84	3.15	3.97	1.93	1.78
▲ Petro & Petro Products	66.12	59.40	61.44	64.04	62.33	65.84	68.79	75.71	73.05	68.86
× Chemicals	24.02	20.19	17.92	21.20	21.42	21.32	20.66	21.14	20.24	20.27
* Crude Materials	19.40	20.76	16.63	16.82	17.32	16.95	15.99	17.84	17.12	14.87
△ Manufactured Goods	5.12	5.60	3.54	4.30	4.05	4.61	4.07	4.87	3.96	3.14
□ Food & Farm	1.07	1.03	1.34	1.46	1.51	1.45	1.40	1.56	1.70	1.99
● Other	2.07	1.98	2.43	2.09	1.57	1.36	1.29	1.04	0.90	0.68

\*Preliminary as of August 1, 2017.  
Includes coastwise tonnage.

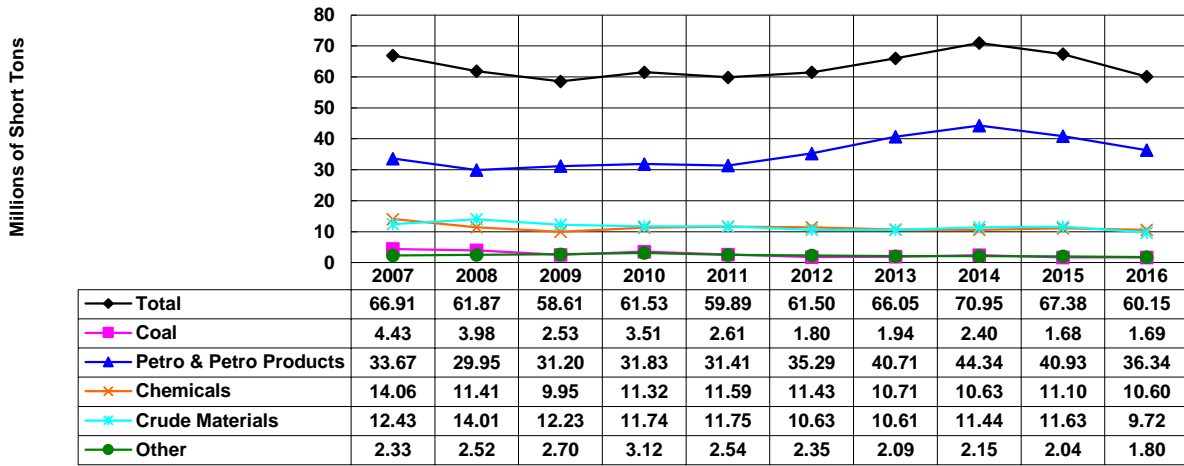


### Gulf Intracoastal Waterway Westbound 2007-2016\*, Millions of Short Tons, By Commodity



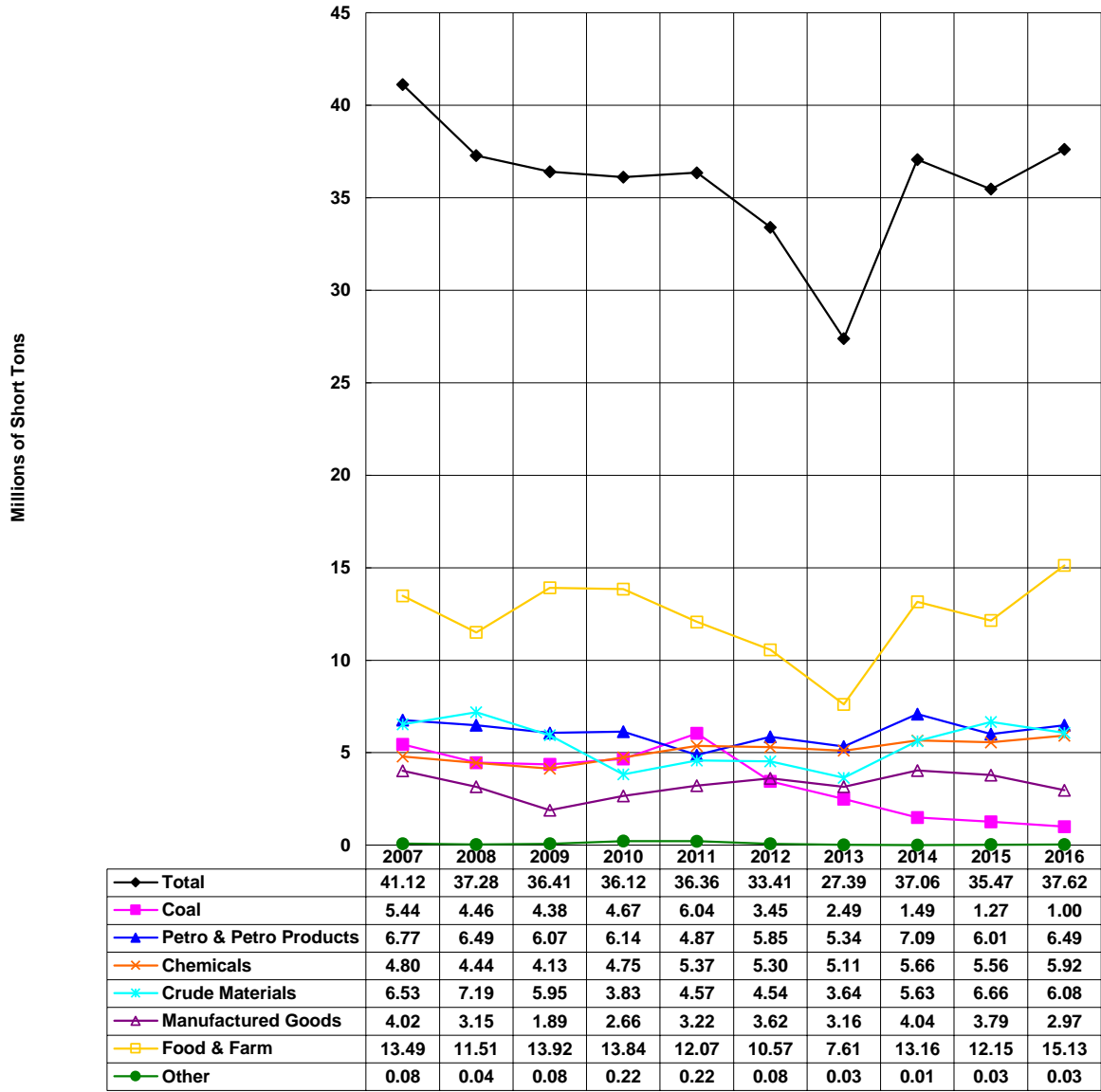
\*Preliminary as of August 1, 2017.  
Includes coastwise tonnage.

### Gulf Intracoastal Waterway Eastbound 2007-2016\*, Millions of Short Tons, By Commodity



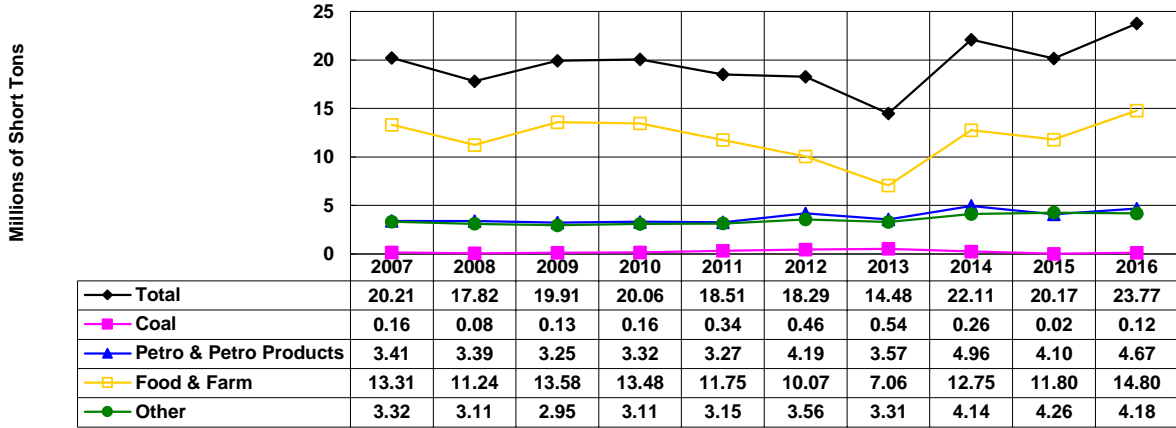
\*Preliminary as of August 1, 2017.  
Includes coastwise tonnage.

**Illinois Waterway - Totals**  
 2007-2016\*, Millions of Short Tons, By Commodity



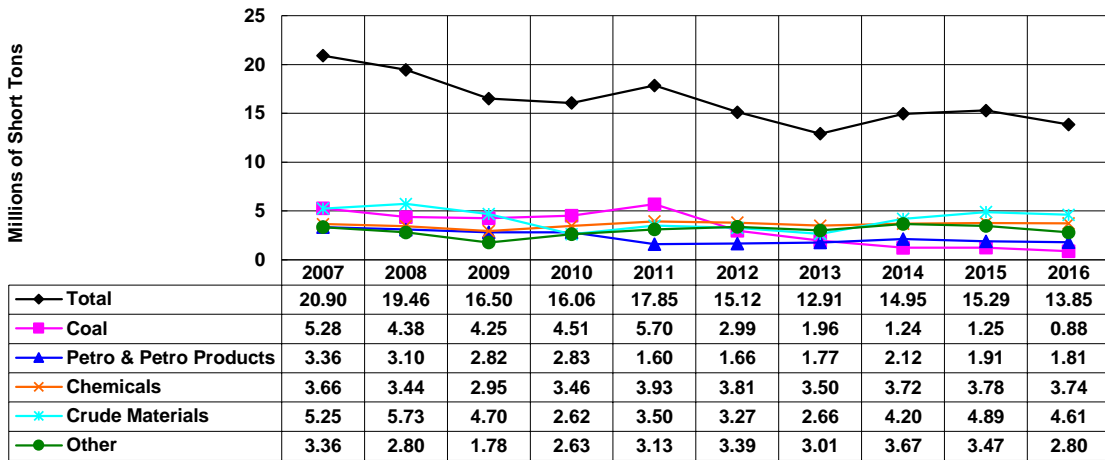
\*Preliminary as of August 1, 2017.

### Illinois Waterway - Downbound 2007-2016\*, Millions of Short Tons, By Commodity



\*Preliminary as of August 1, 2017.

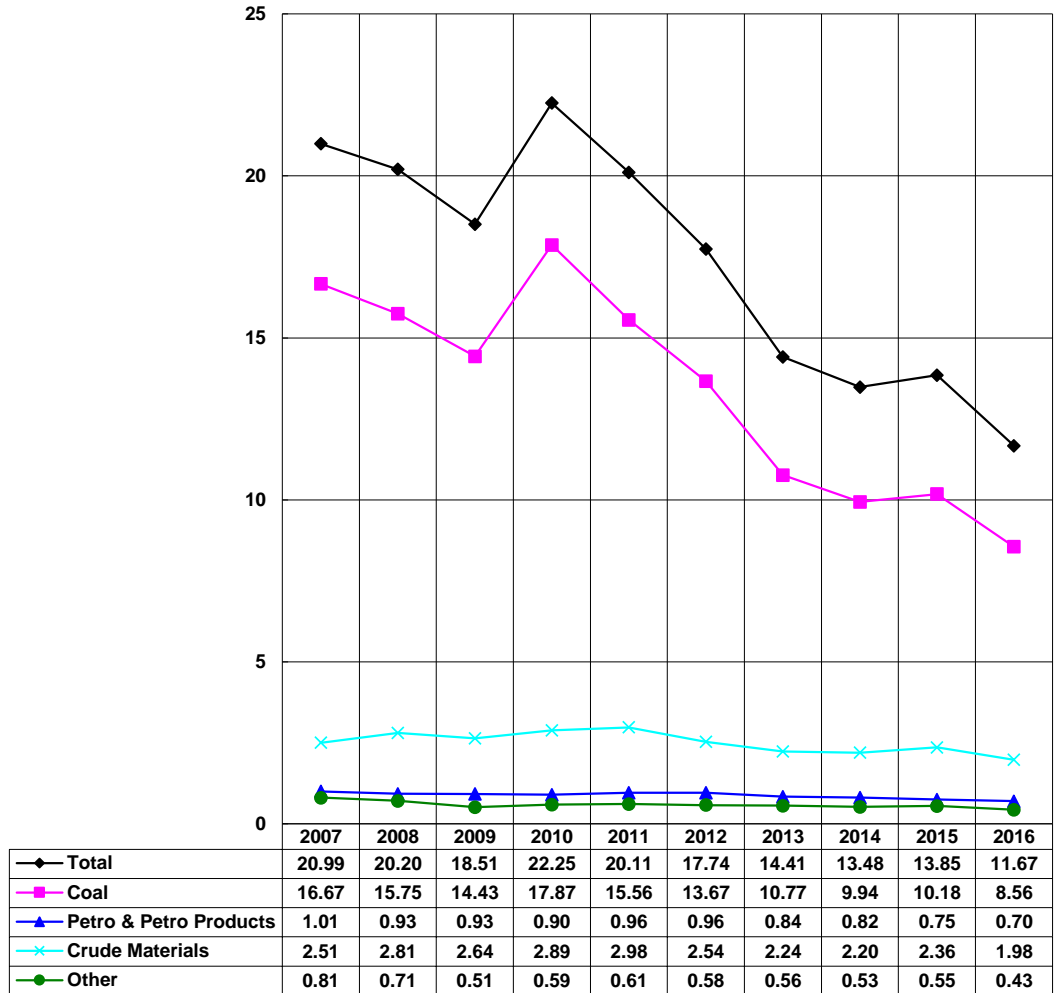
### Illinois Waterway - Upbound 2007-2016\*, Millions of Short Tons, By Commodity



\*Preliminary as of August 1, 2017.

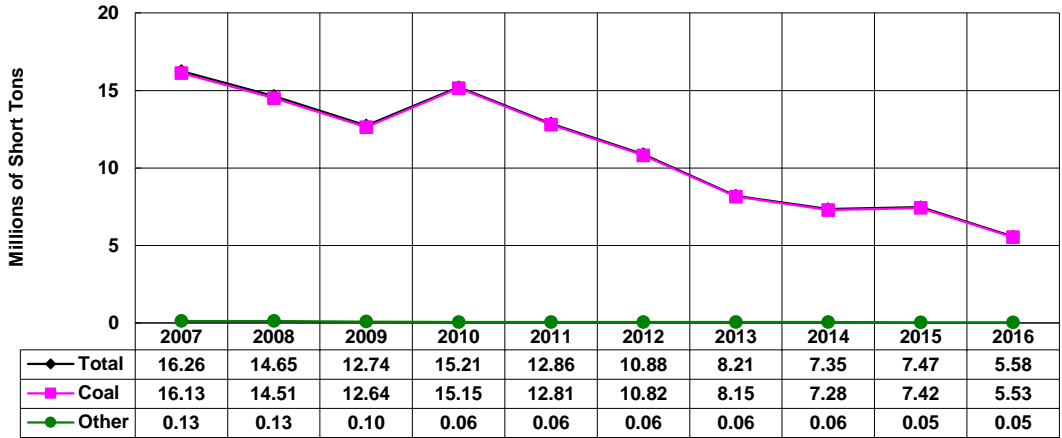
**Kanawha River - Totals**  
2007-2016\*, Millions of Short Tons, By Commodity

Millions of Short Tons



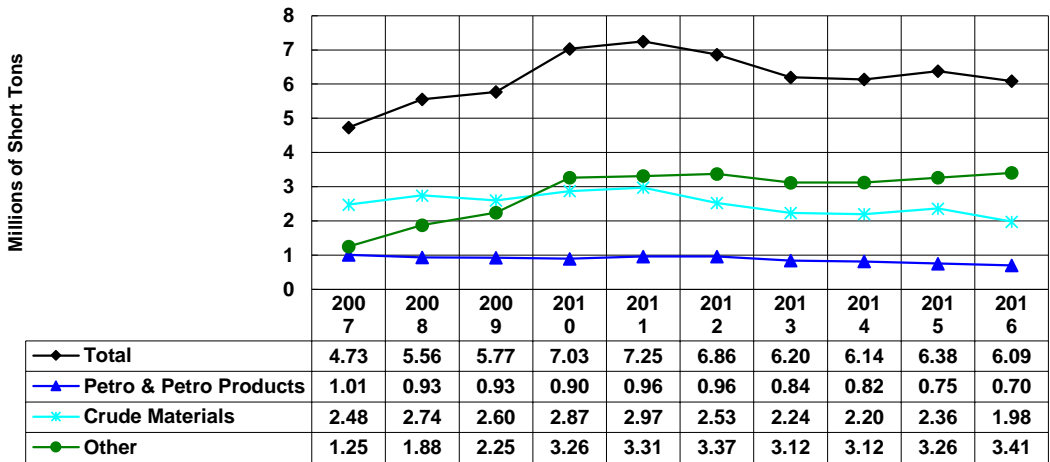
\*Preliminary as of August 1, 2017.

**Kanawha River - Downbound**  
2007-2016\*, Millions of Short Tons, By Commodity



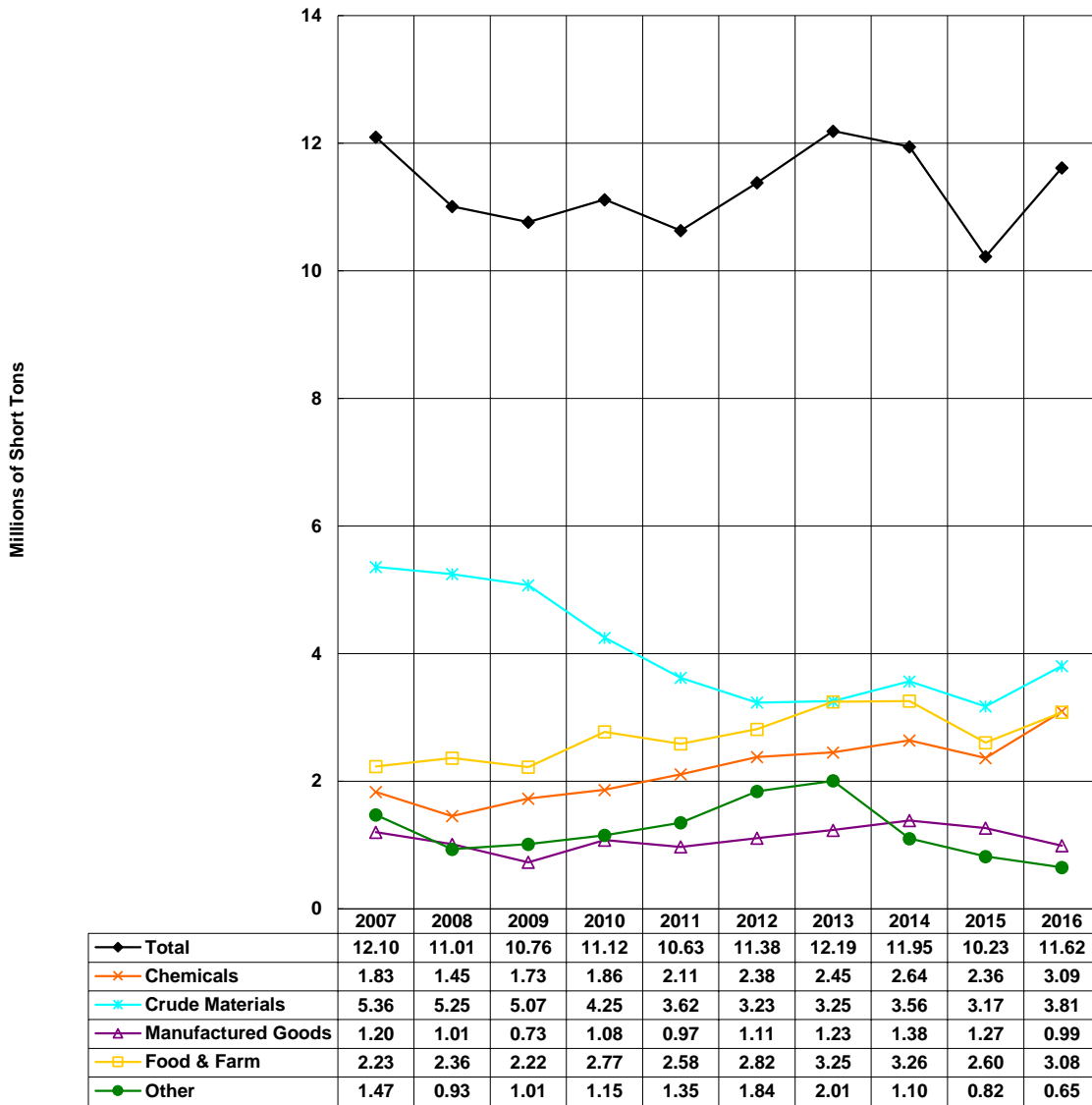
\*Preliminary as of August 1, 2017.

**Kanawha River - Upbound**  
2007-2016\*, Millions of Short Tons, By Commodity



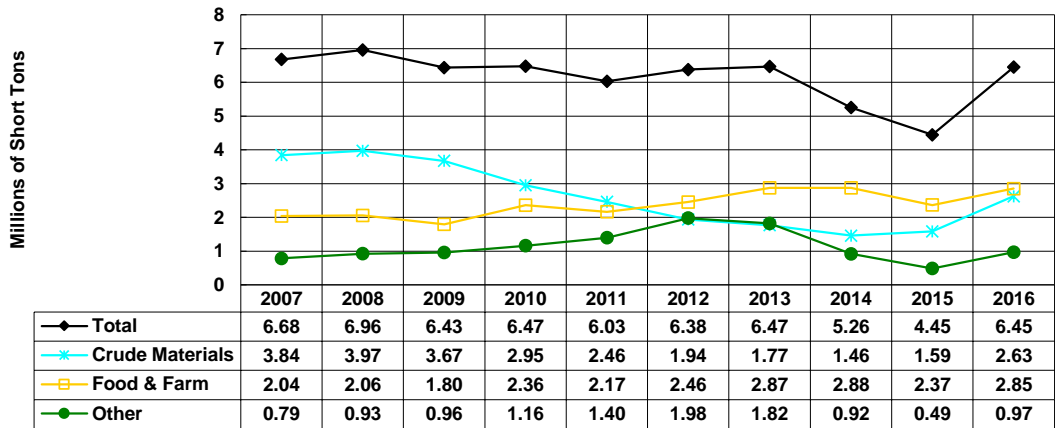
\*Preliminary as of August 1, 2017.

### McClellan-Kerr Waterway - Totals 2007-2016\*, Millions of Short Tons, By Commodity



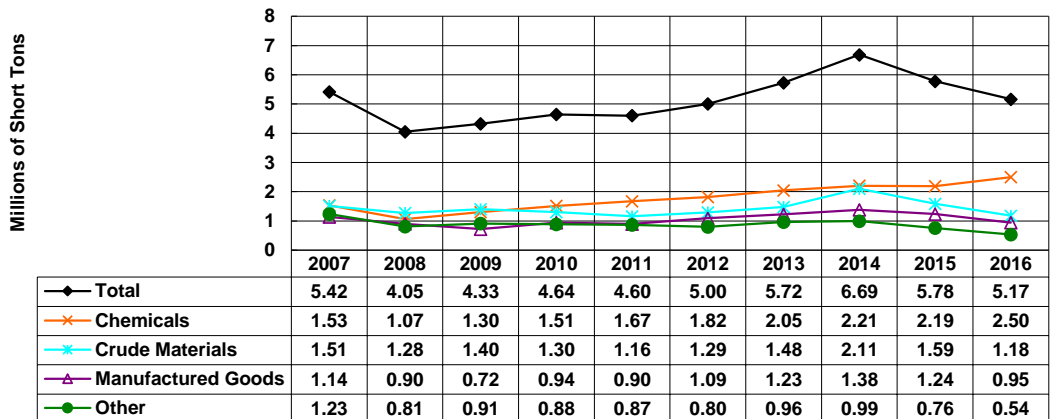
\*Preliminary as of August 1, 2017.

### McClellan-Kerr Waterway - Downbound 2007-2016\*, Millions of Short Tons, By Commodity



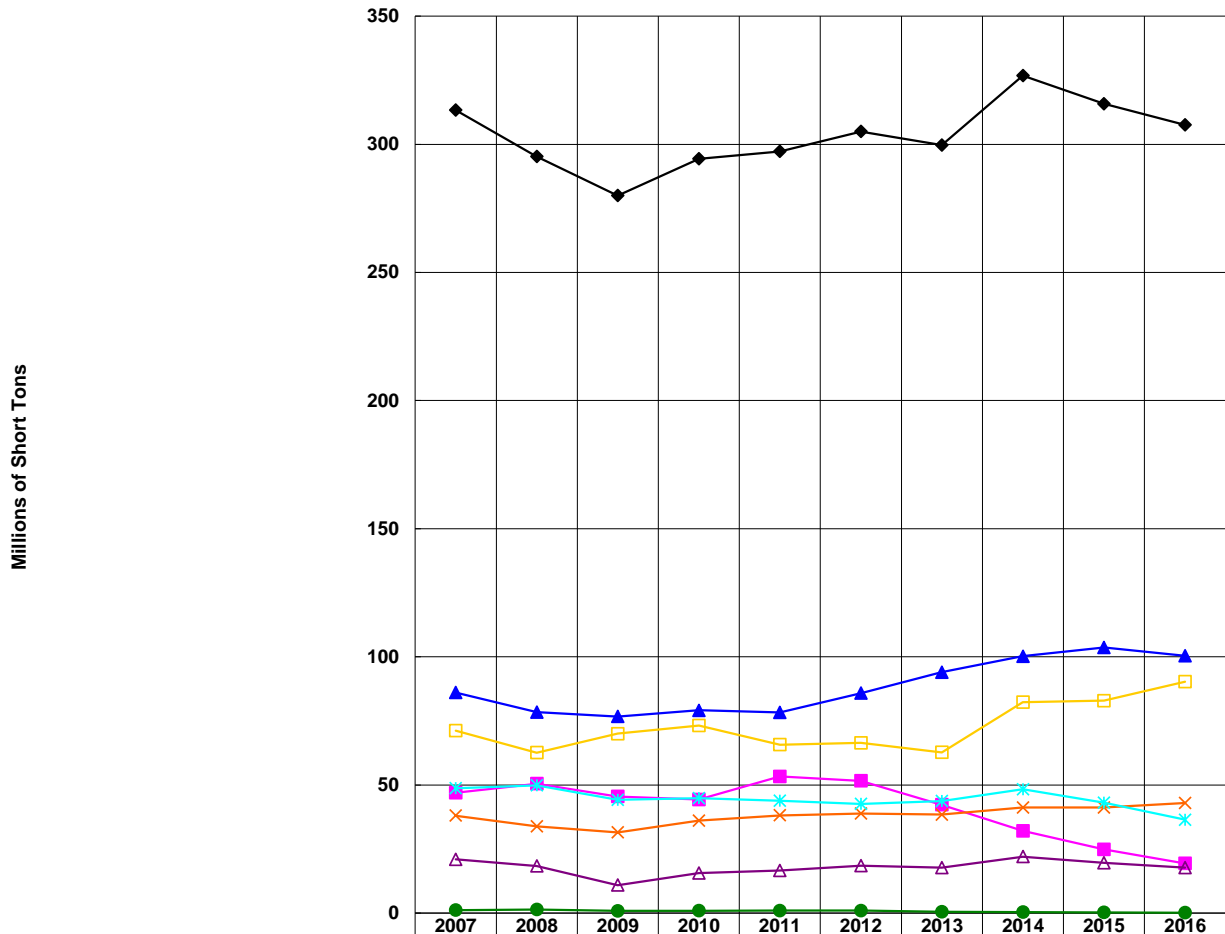
\*Preliminary as of August 1, 2017.

### McClellan-Kerr Waterway - Upbound 2007-2016\*, Millions of Short Tons, By Commodity



\*Preliminary as of August 1, 2017.

**Mississippi River - Totals**  
2007-2016\*, Millions of Short Tons, By commodity

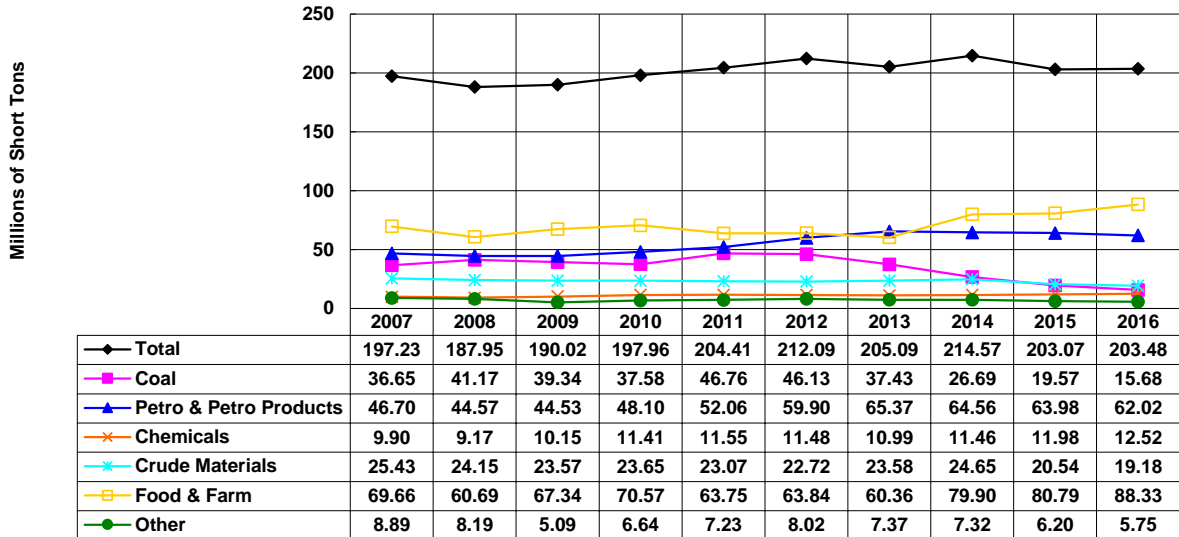


	2007	2008	2009	2010	2011	2012	2013	2014	2015	2016
◆ Total	313.31	295.18	280.00	294.31	297.17	304.96	299.68	326.75	315.77	307.50
■ Coal	47.00	50.50	45.52	44.36	53.32	51.60	42.30	32.14	24.91	19.40
▲ Petro & Petro Products	86.13	78.45	76.76	79.14	78.34	85.82	94.01	100.27	103.66	100.45
× Chemicals	38.06	33.92	31.56	36.14	38.18	38.87	38.45	41.23	41.23	42.94
* Crude Materials	48.79	49.84	44.26	44.82	43.89	42.66	43.78	48.32	43.10	36.44
△ Manufactured Goods	20.97	18.46	10.97	15.69	16.66	18.53	17.81	22.07	19.64	17.73
□ Food & Farm	71.17	62.62	70.03	73.19	65.76	66.47	62.77	82.29	82.92	90.37
● Other	1.20	1.38	0.91	0.97	1.03	1.00	0.56	0.44	0.30	0.18

\*Preliminary as of August 1, 2017.  
Domestic tonnage only (including coastwise).

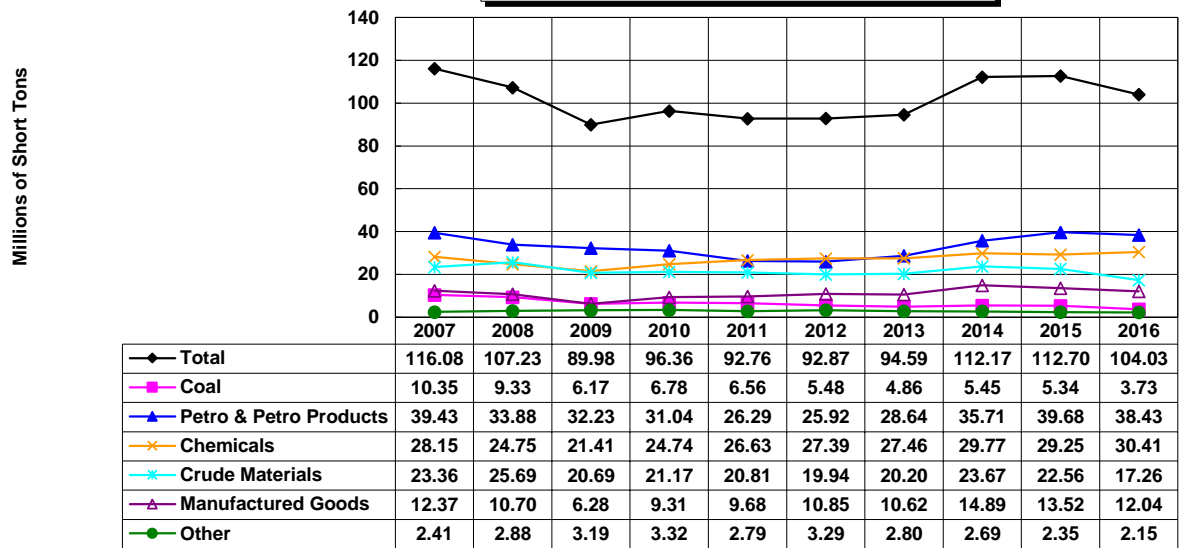


### Mississippi River - Downbound 2007-2016\*, Millions of Short Tons, By Commodity



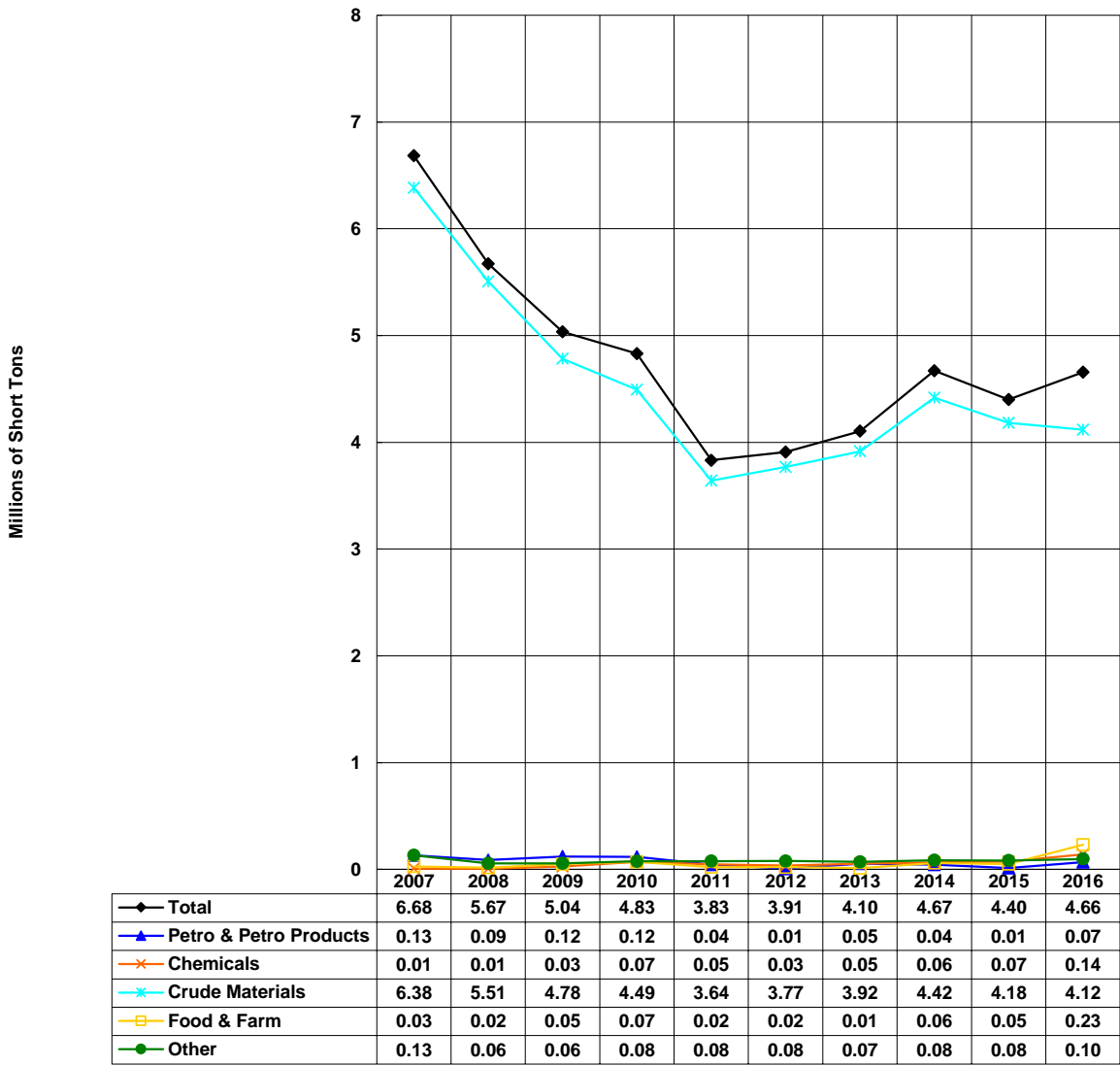
\*Preliminary as of August 1, 2017.  
Domestic tonnage only (including coastwise).

### Mississippi River - Upbound 2007-2016\*, Millions of Short Tons, By Commodity



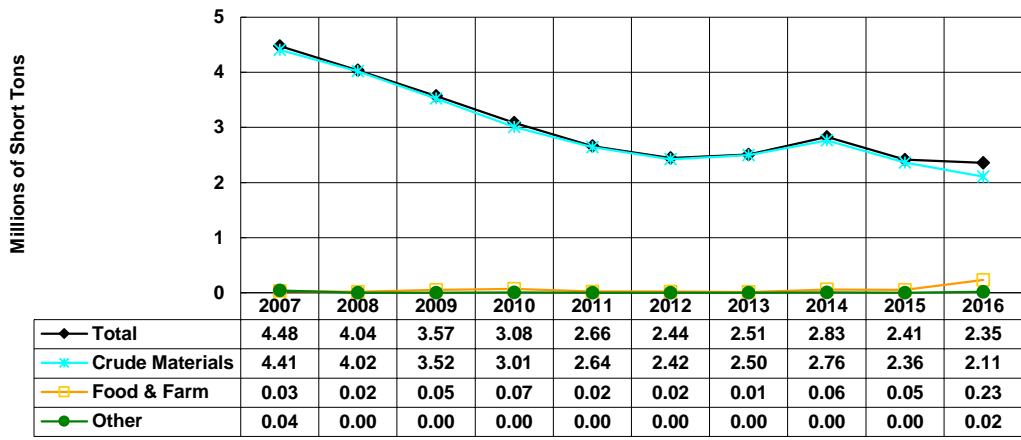
\*Preliminary as of August 1, 2017.  
Domestic tonnage only (including coastwise).

**Missouri River Totals**  
2007-2016\*, Millions of Short Tons, By Commodity



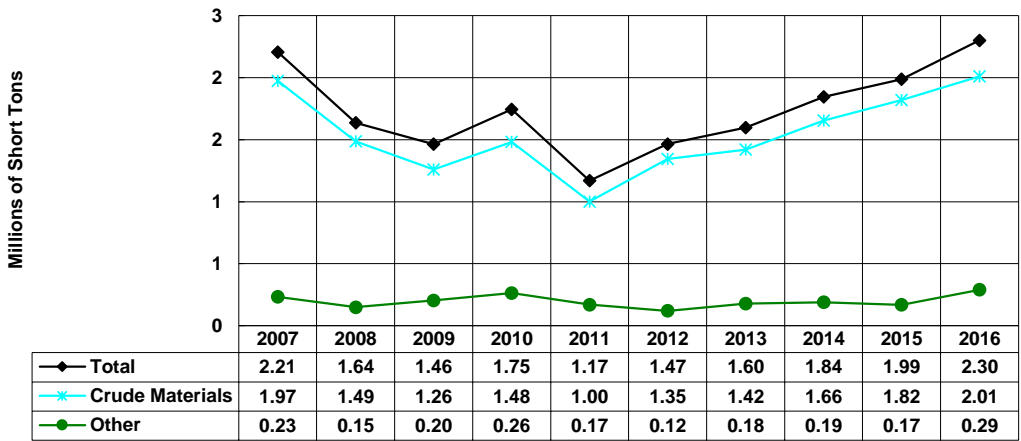
\*Preliminary as of August 1, 2017.

**Missouri River Downbound**  
2007-2016\*, Millions of Short Tons, By Commodity



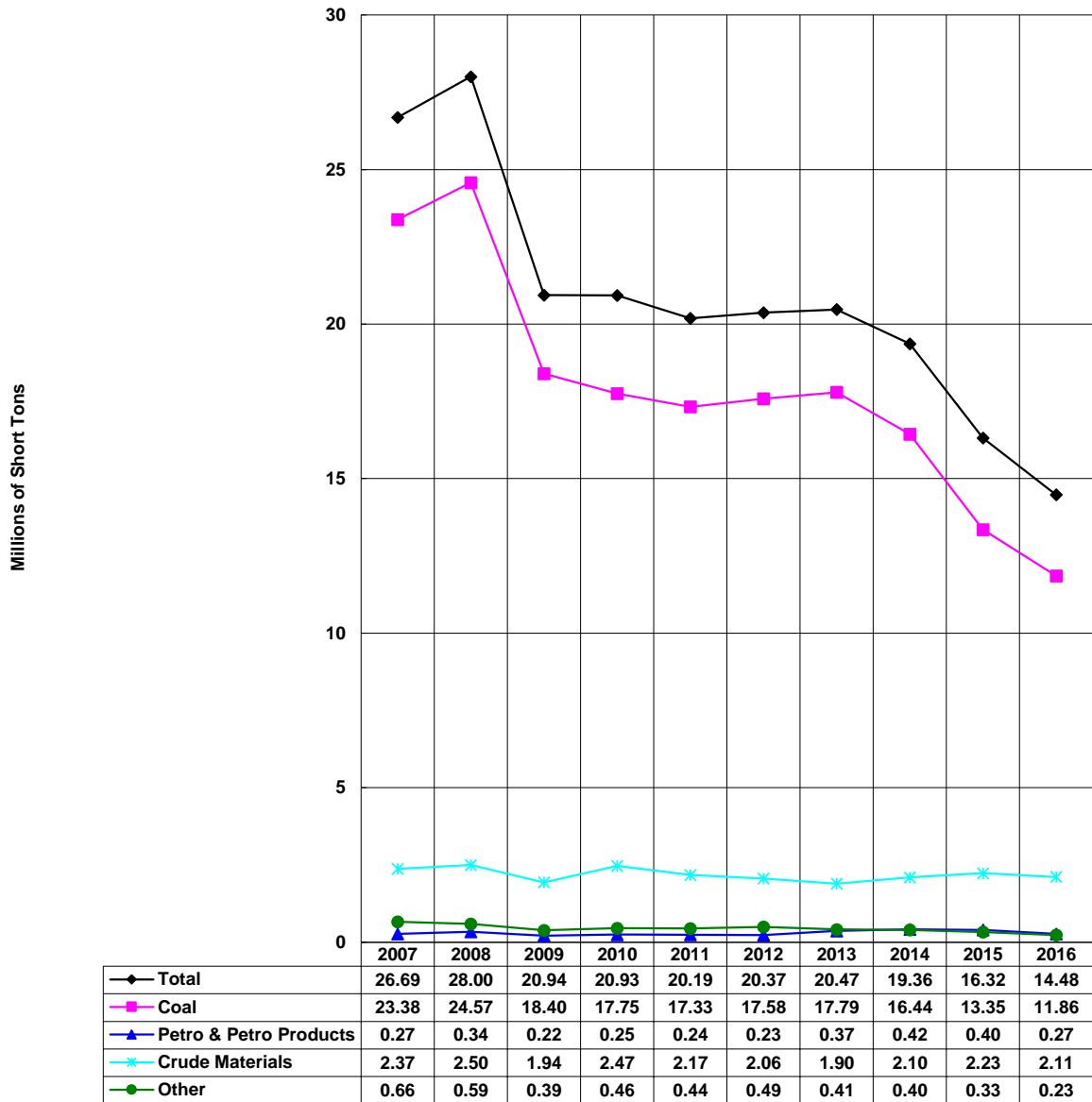
\*Preliminary as of August 1, 2017.

**Missouri River Upbound**  
2007-2016\*, Millions of Short Tons, By Commodity



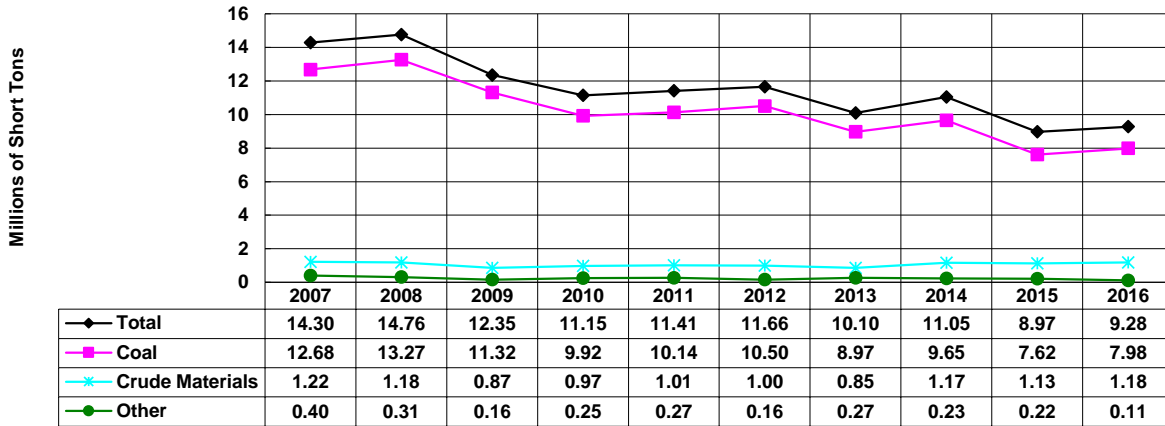
\*Preliminary as of August 1, 2017.

**Monongahela River - Totals**  
 2007-2016\*, Millions of Short Tons, By Commodity



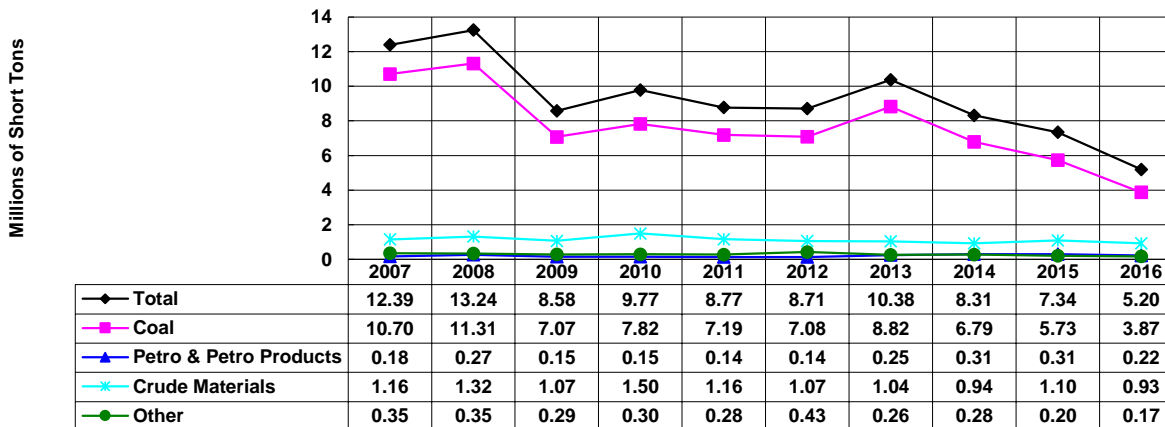
\*Preliminary as of August 1, 2017.

### Monongahela River - Downbound 2007-2016\*, Millions of Short Tons, By Commodity



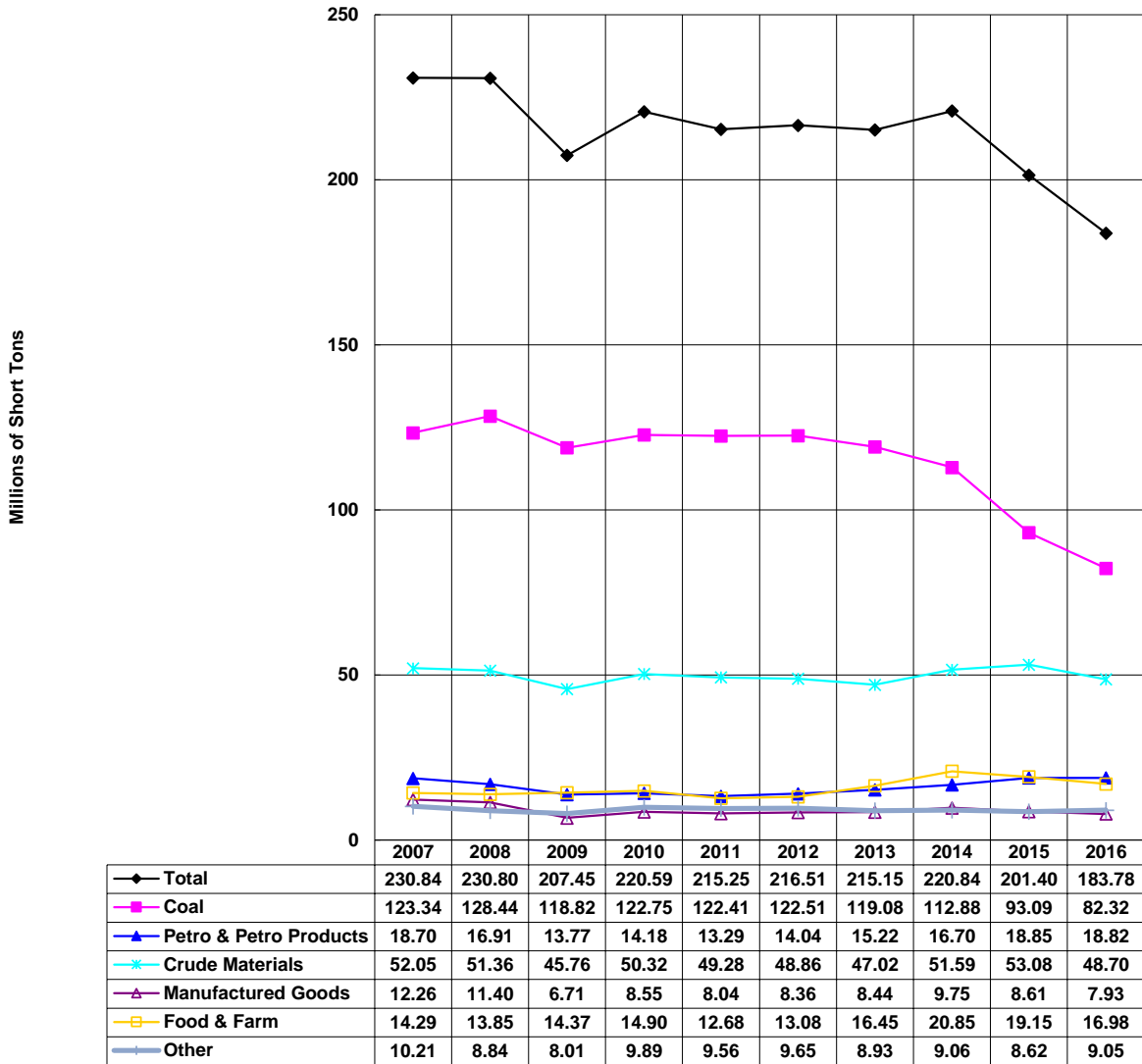
\*Preliminary as of August 1, 2017.

### Monongahela River - Upbound 2007-2016\*, Millions of Short Tons, By Commodity



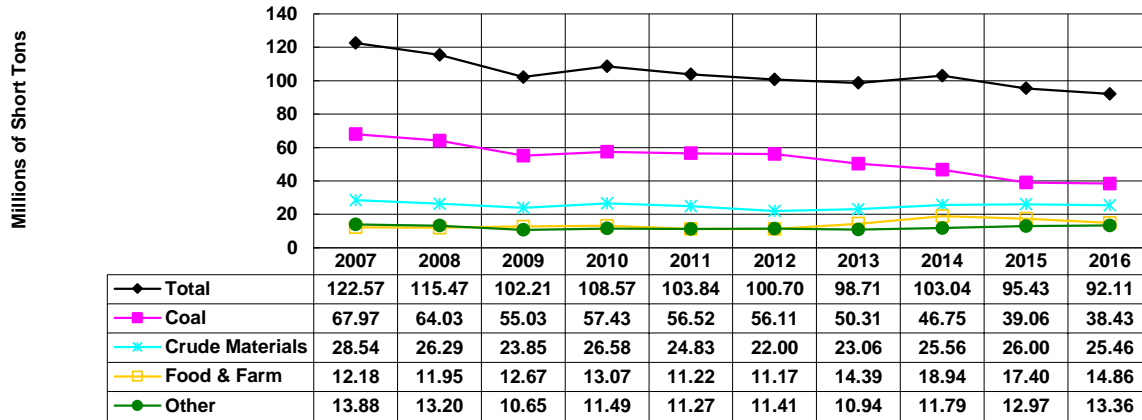
\*Preliminary as of August, 2017.

**Ohio River - Totals**  
2007-2016\*, Millions of Short Tons, By Commodity



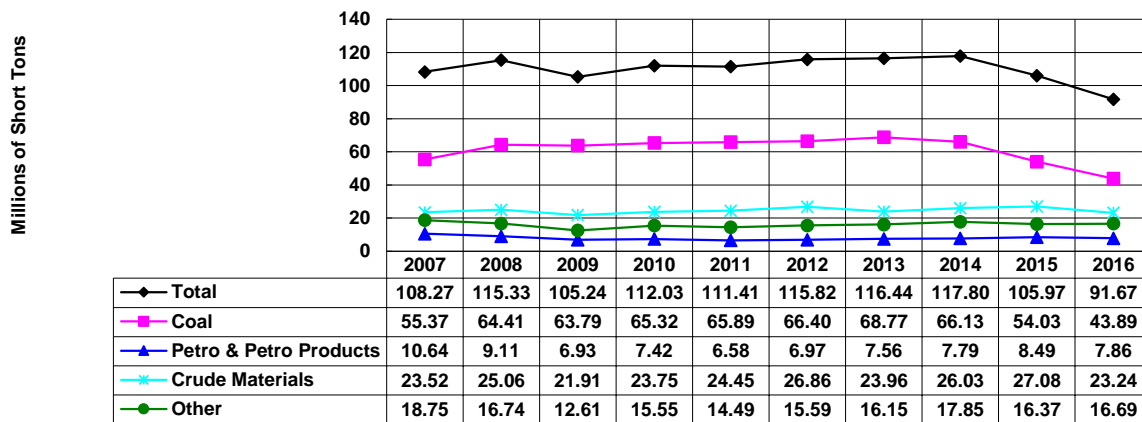
\*Preliminary as of August 1, 2017.

**Ohio River - Downbound**  
2007-2016\*, Millions of Short Tons, By Commodity



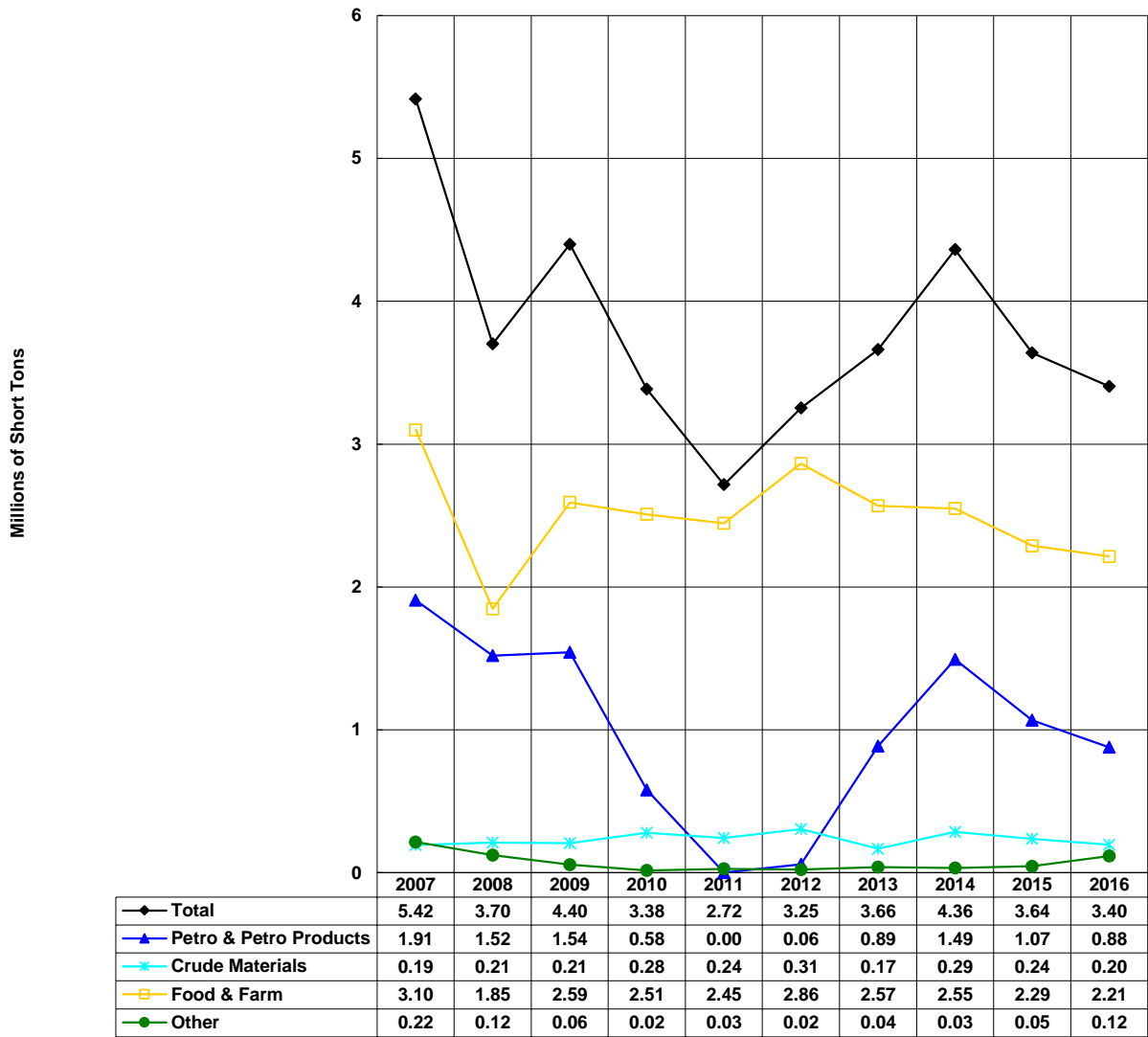
\*Preliminary as of August 1, 2017.

**Ohio River - Upbound**  
2007-2016\*, Millions of Short Tons, By Commodity



\*Preliminary as of August 1, 2017.

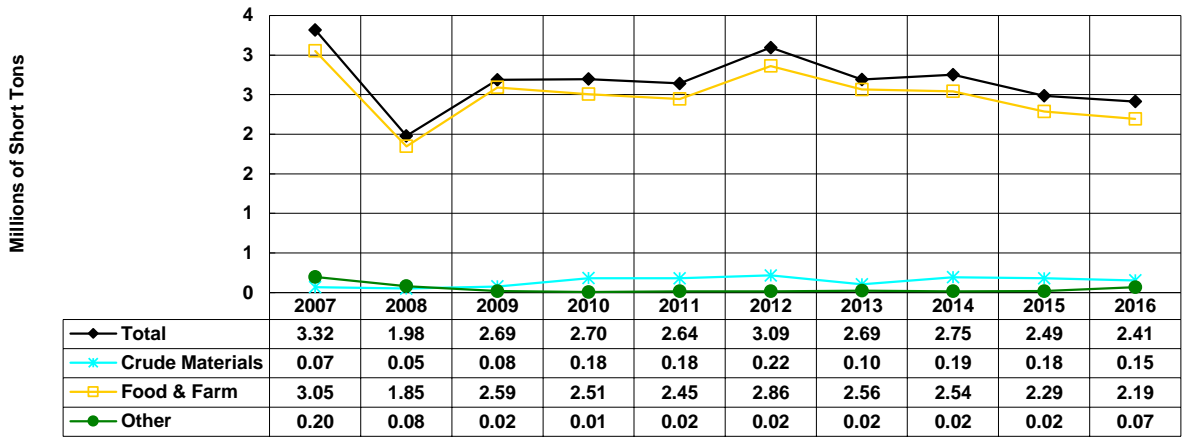
**Snake River - Totals**  
2007-2016\*, Millions of Short Tons, By Commodity



\*Preliminary as of August 1, 2017.

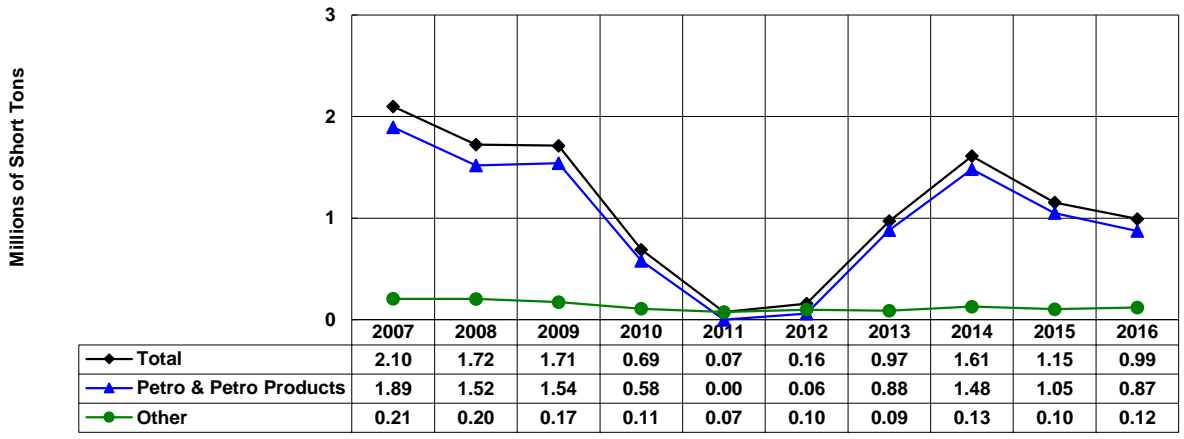


**Snake River - Downbound**  
2007-2016\*, Millions of Short Tons, By Commodity



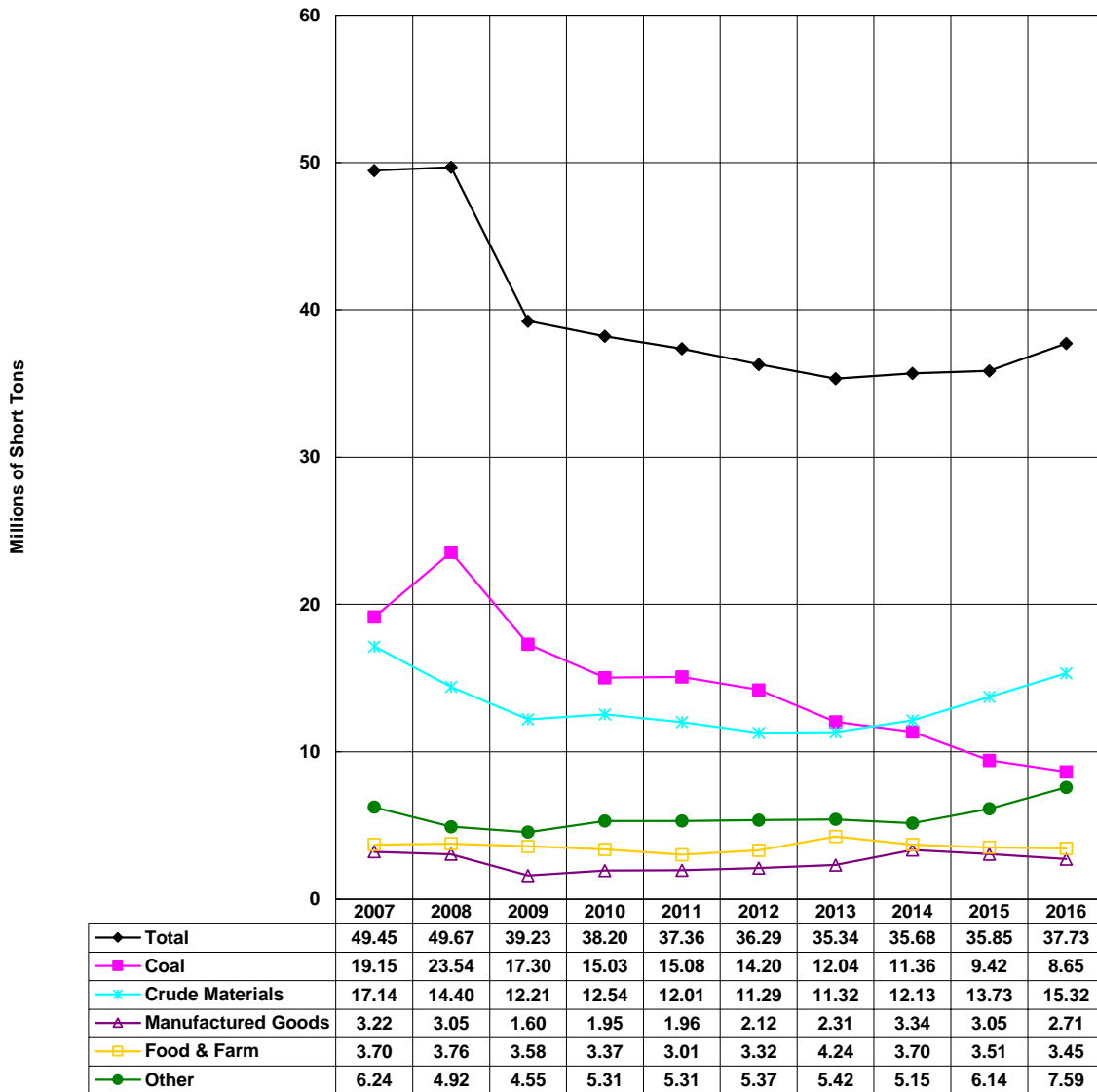
\*Preliminary as of August 1, 2017.

**Snake River - Upbound**  
2007-2016\*, Millions of Short Tons, By Commodity



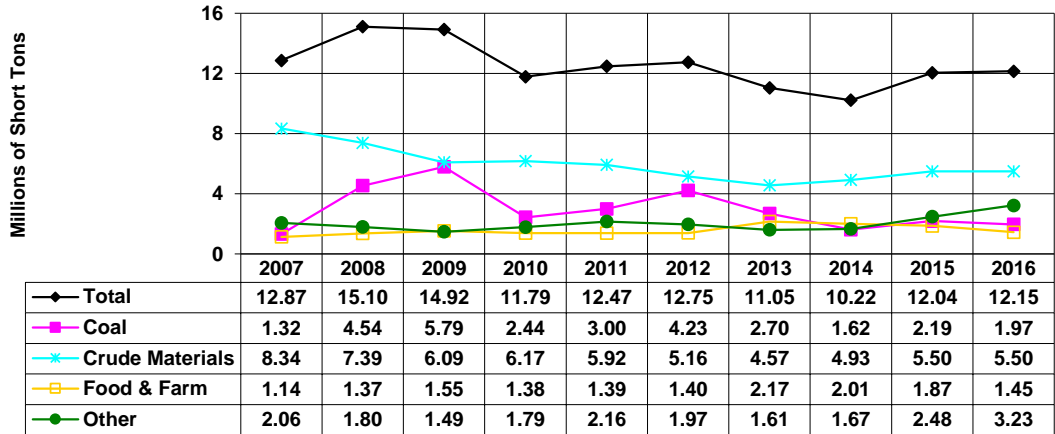
\*Preliminary as of August 1, 2017.

**Tennessee River - Totals**  
2007-2016\*, Millions of Short Tons, By Commodity



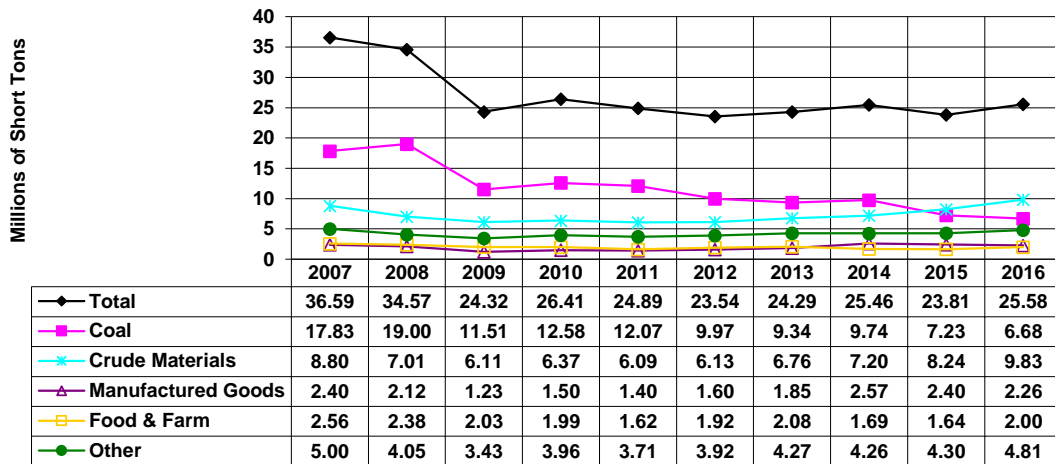
\*Preliminary as of August 1, 2017.

### Tennessee River - Downbound 2007-2016\*, Millions of Short Tons, By Commodity



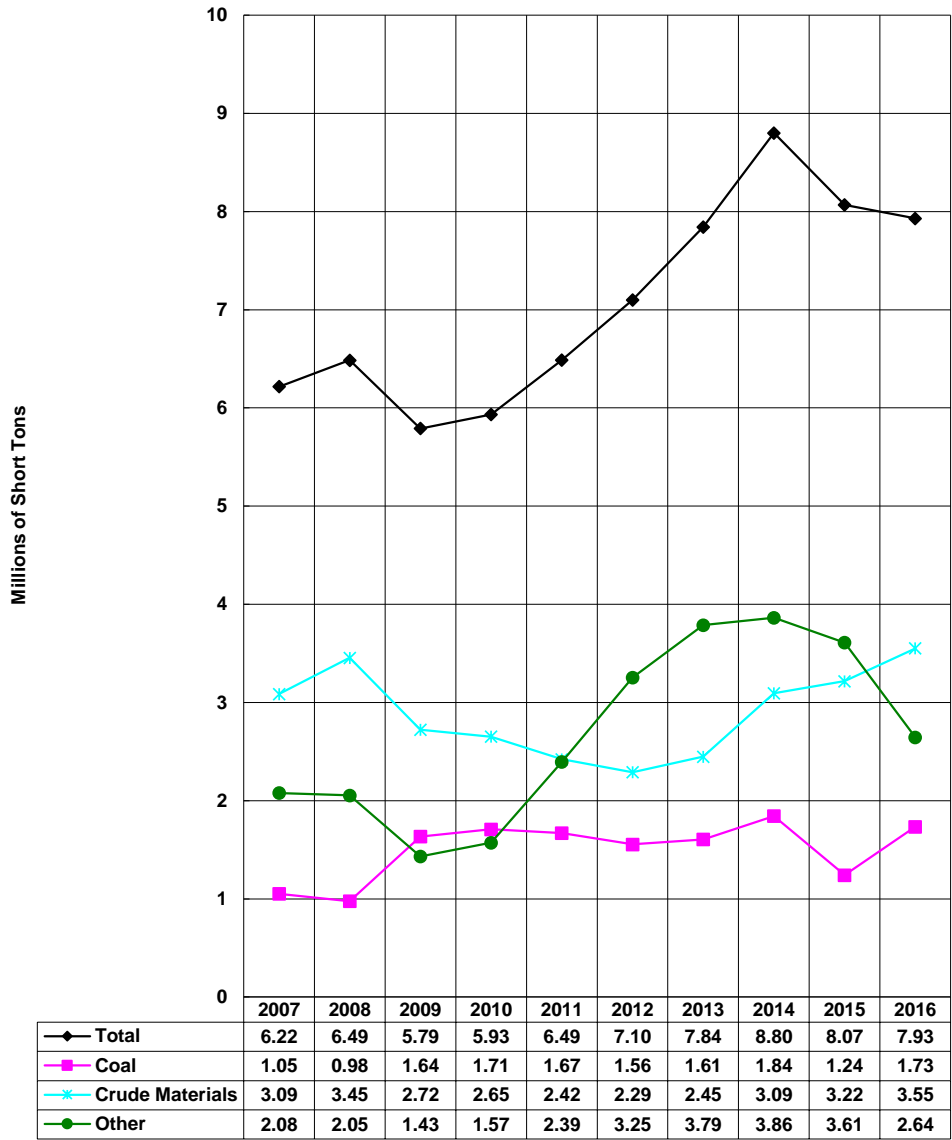
\*Preliminary as of August 1, 2017.

### Tennessee River - Upbound 2007-2016\*, Millions of Short Tons, By Commodity



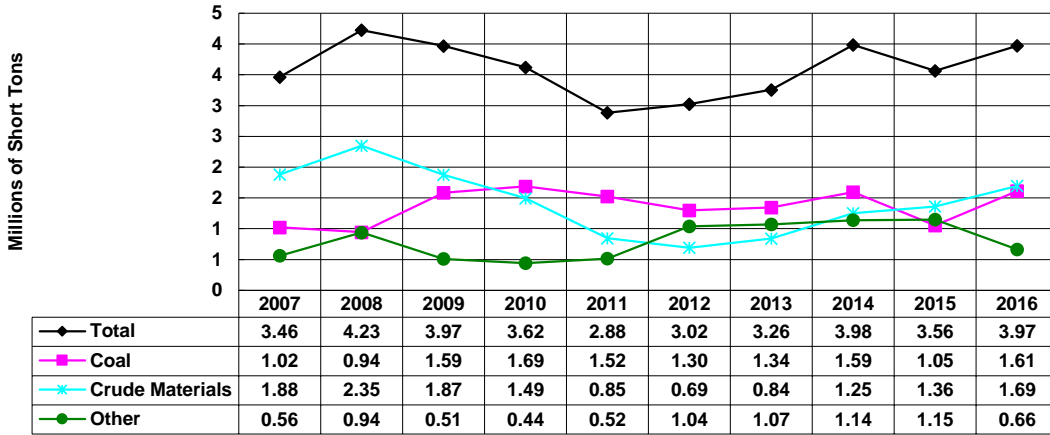
\*Preliminary as of August 1, 2017

**Tennessee-Tombigbee Waterway - Totals**  
 2007-2016\*, Millions of Short Tons, By Commodity



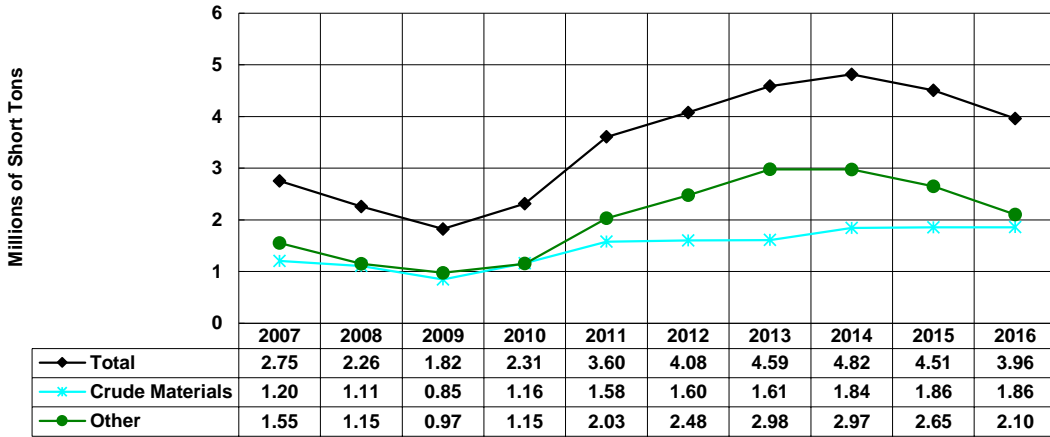
\*Preliminary as of August 1, 2017

**Tennessee - Tombigbee Waterway**  
**Southbound, 2007-2016\*, Millions of Short Tons, By Commodity**



\*Preliminary as of August 1, 2017.

**Tennessee - Tombigbee Waterway**  
**Northbound, 2007-2016\*, Millions of Short Tons, By Commodity**



\*Preliminary as of August 1, 2017.