

Final Waterborne Commerce Statistics

For Calendar Year 2016

Waterborne Commerce National Totals And Selected Inland Waterways For Multiple Years

**Institute for Water Resources
Navigation and Civil Works Decision Support Center**

U.S. Army Corps of Engineers

Waterborne Commerce Statistics Center

Introduction

In order to provide waterborne commerce information in a graphical format, the Waterborne Commerce Statistics Center (WCSC) has prepared this summary document of waterborne commerce statistics for calendar year 2016. The foreign inbound and outbound data is import, export, and inbound/outbound in-transit data. The domestic national totals are calendar year 2016 data collected from vessel operating companies.

All graphs and tables (except page 1) show domestic tonnages (short tons). All graphs after page 1 include all internal tonnage, which is tonnage moving exclusively on waterways within the boundaries of the United States. The deep-draft sections of the Mississippi, the Columbia and the Gulf Intracoastal Waterway include domestic coastwise data as well. This coastwise tonnage travels on these internal waterways and also Coastwise (the oceans or the Gulf of Mexico). Please note that rounding may result in commodity tonnages that do not add up to the totals for a waterway.

WCSC uses the Internet to expedite release of statistics. Please visit our World Wide Web home page at:

<http://www.navigationdatacenter.us/>

There you will find the timeliest WCSC statistics including this report, port rankings, container information, and our monthly internal traffic indicators.

Questions or comments may be communicated to:

Waterborne Commerce Statistics Center, USACE
P. O. Box 61280
New Orleans, LA 70161-1280
Telephone: (504) 862-1426
(504) 862-1441
Fax No.: (504) 862-1423
E-Mail: CEIWR-NDCWCSC.WEBMASTER@usace.army.mil

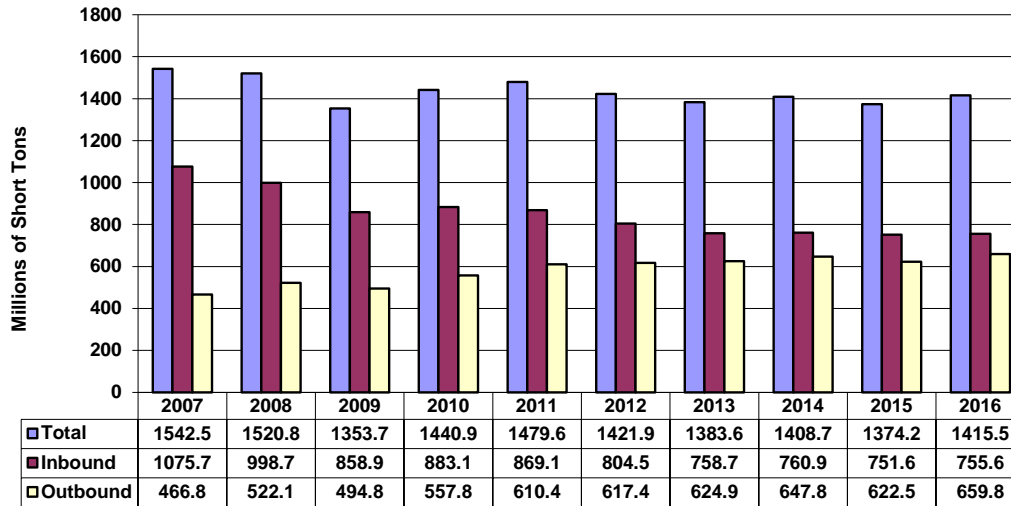
Table of Contents

Table/Graph	Page
Introduction	i
Table of Contents	ii
Explanation of Commodity Groups	iii
Foreign Waterborne Inbound and Outbound Traffic (2007-2016)	1
Domestic Waterborne Commerce of the U.S. – By Type Traffic (2007-2016)	1
Internal Waterways Tonnage Comparisons: 2016 vs 2015	2
Internal Waterways Tonnage Comparisons: Graph of Percent Change	3
National Internal Commodities	4
Total of Selected Waterways (2007-2016)	5
Allegheny River	6
Atchafalaya River	8
Atlantic Intracoastal Waterway	10
Big Sandy River	12
Black Warrior and Tombigbee Rivers	14
Columbia River	16
Cumberland River	18
Gulf Intracoastal Waterway	20
Illinois Waterway	22
Kanawha River	24
McClellan-Kerr Waterway	26
Mississippi River	28
Missouri River	30
Monongahela River	32
Ohio River	34
Snake River	36
Tennessee River	38
Tennessee-Tombigbee Waterway	40

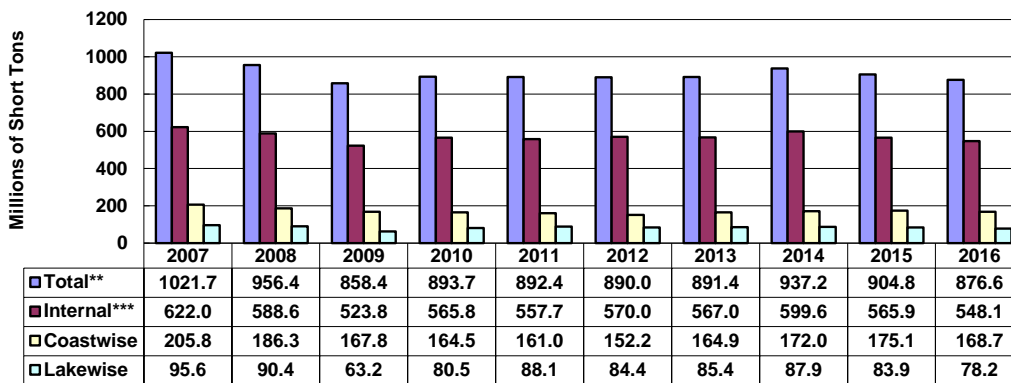
Explanation of Commodity Groups

Coal:	Coal, lignite, and coke
Petro & Petro Products:	Petroleum and Petroleum Products
Chemicals:	Chemicals and fertilizers
Crude Materials:	Crude materials, inedible, such as: forest products, pulp, sand, gravel, stone, iron ore, marine shells, non-ferrous metallic ores, and sulphur
Manufactured Goods:	Primary manufactured goods, such as: paper and allied products, concrete, iron, steel, non-ferrous metals, and wood products
Food and Farm:	Food, grain, and farm products
Manufactured Equipment:	All manufactured equipment
Waste material:	Waste material, such as: garbage, landfill, sewage sludge, and waste water.
Other:	Commodity group not specifically listed in a table. (This will differ from table to table).

Foreign Waterborne Inbound and Outbound Traffic
2007-2016, Millions of Short Tons



Domestic Waterborne Commerce of the U.S.
2007-2016, Millions of Short Tons, by Type of Traffic



**Total also includes Intraport and Intra-territory traffic.
***Total Internal excludes waterway improvement materials.

Domestic U.S. Waterborne Traffic

Annual Tonnage Comparisons: 2016 VS 2015

Millions of Short Tons

	CY15	CY16	Percent Change
National Totals**			
Domestic	904.8	876.6	-3.12%
Lakewise	83.9	78.2	-6.80%
Coastwise	175.1	168.7	-3.63%
Intraport	78.3	80.1	2.24%
Intra-territory	1.6	1.5	-6.12%
Internal	565.9	548.1	-3.15%

National Internal Commodities

Coal	126.2	109.8	-13.00%
Petroleum	162.8	157.6	-3.16%
Chemicals	50.9	52.3	2.80%
Crude Materials	100.0	96.7	-3.37%
Manufactured Goods	28.6	26.8	-6.08%
Food and Farm	89.7	97.2	8.37%
Manufactured Equipment	6.8	6.8	-0.10%
Other	1.0	0.9	-8.08%

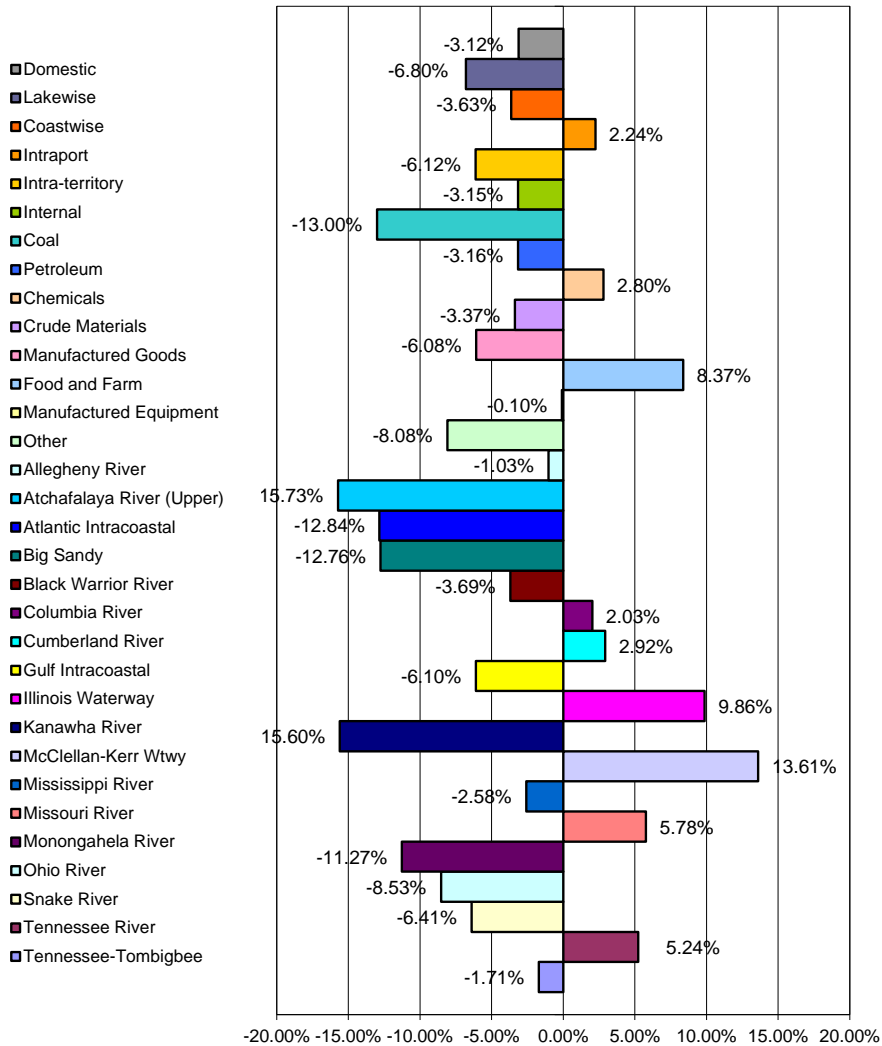
Waterways

Allegheny River	0.7	0.7	-1.03%
Atchafalaya River (Upper)	10.9	9.1	-15.73%
Atlantic Intracoastal	2.6	2.2	-12.84%
Big Sandy	6.1	5.3	-12.76%
Black Warrior River	18.4	17.7	-3.69%
Columbia River***	13.5	13.8	2.03%
Cumberland River	21.8	22.5	2.92%
Gulf Intracoastal***	118.9	111.7	-6.10%
Illinois Waterway	35.5	39.0	9.86%
Kanawha River	13.9	11.7	-15.60%
McClellan-Kerr Wtwy	10.2	11.6	13.61%
Mississippi River***	315.8	307.6	-2.58%
Missouri River	4.4	4.7	5.78%
Monongahela River	16.3	14.5	-11.27%
Ohio River	201.4	184.2	-8.53%
Snake River	3.6	3.4	-6.41%
Tennessee River	35.8	37.7	5.24%
Tennessee Tombigbee	8.1	7.9	-1.71%

**All National Totals exclude waterway improvement materials.

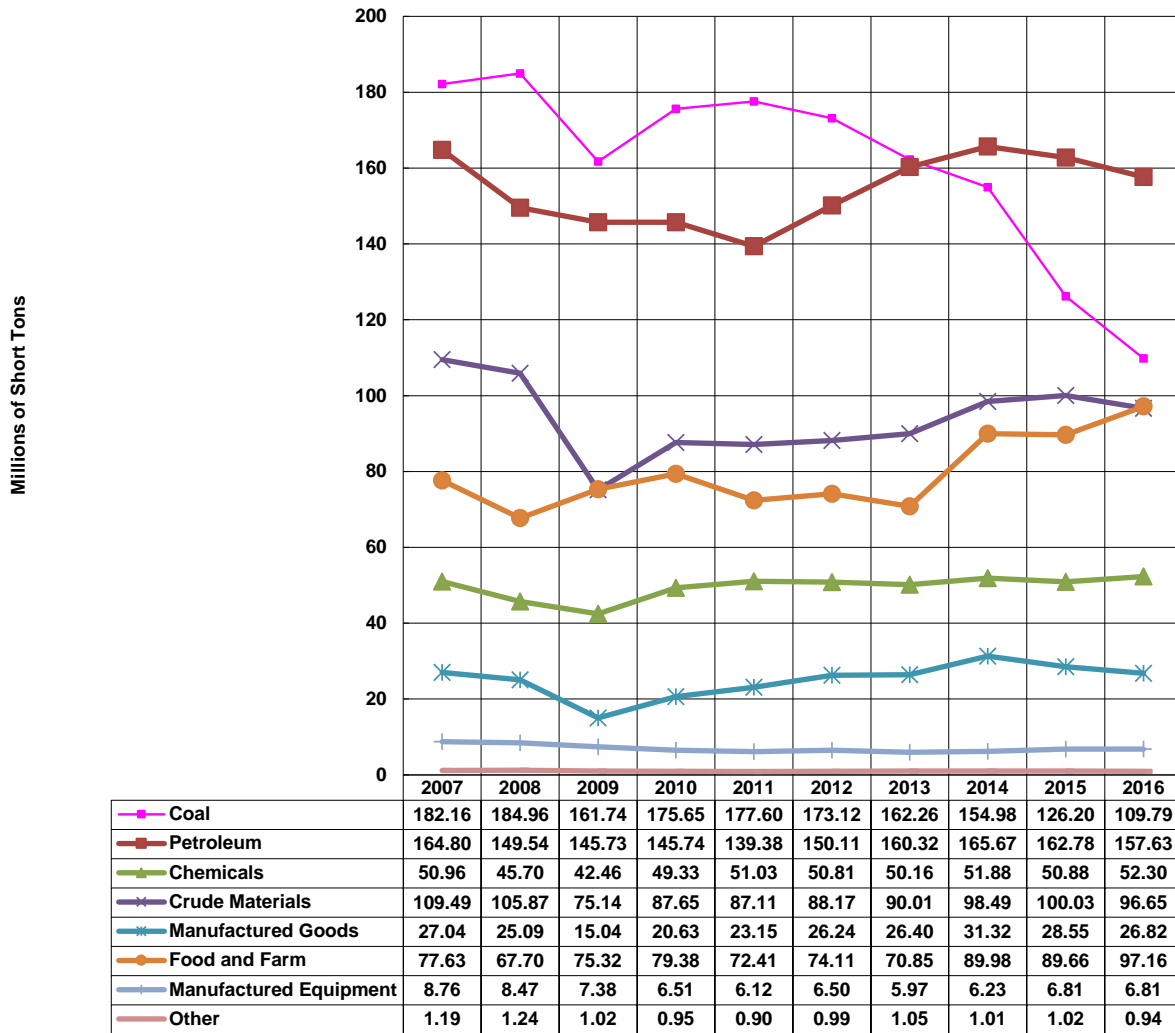
***Includes domestic coastwise tonnage.

Domestic U.S. Waterborne Traffic Tonnage Comparisons: 2016 vs. 2015



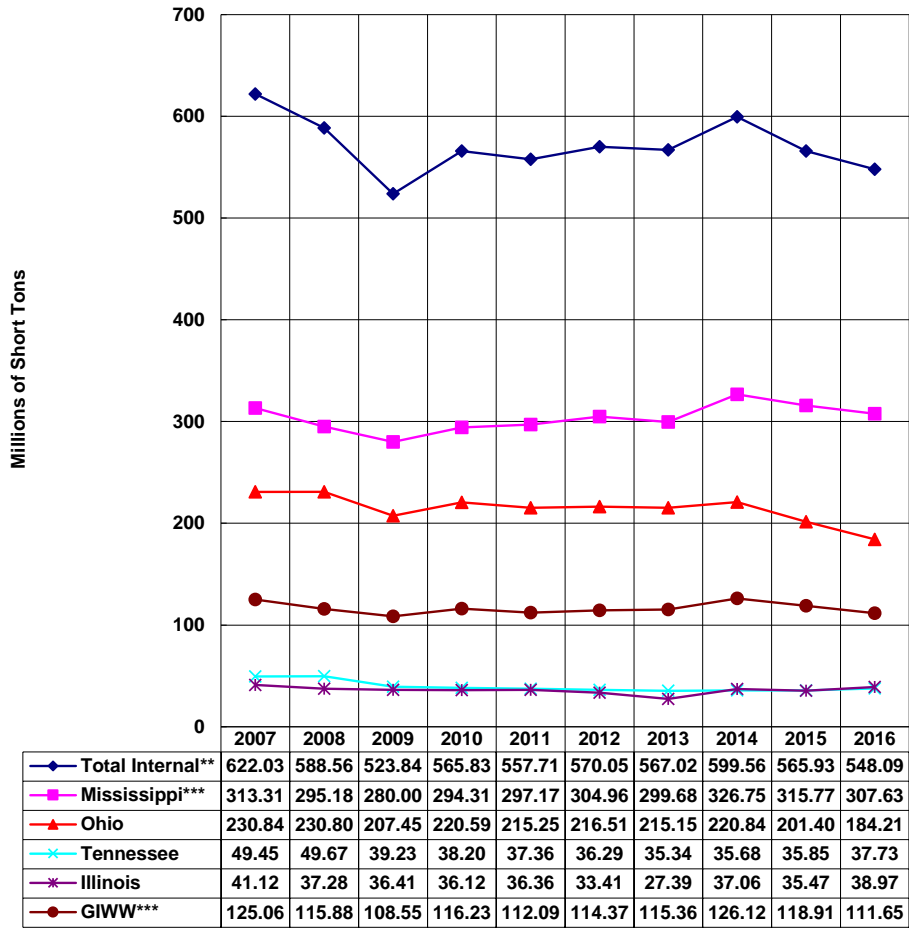
Waterway improvement materials excluded from National Totals.

National Internal Commodities 2007-2016, Millions of Short Tons, By Commodity



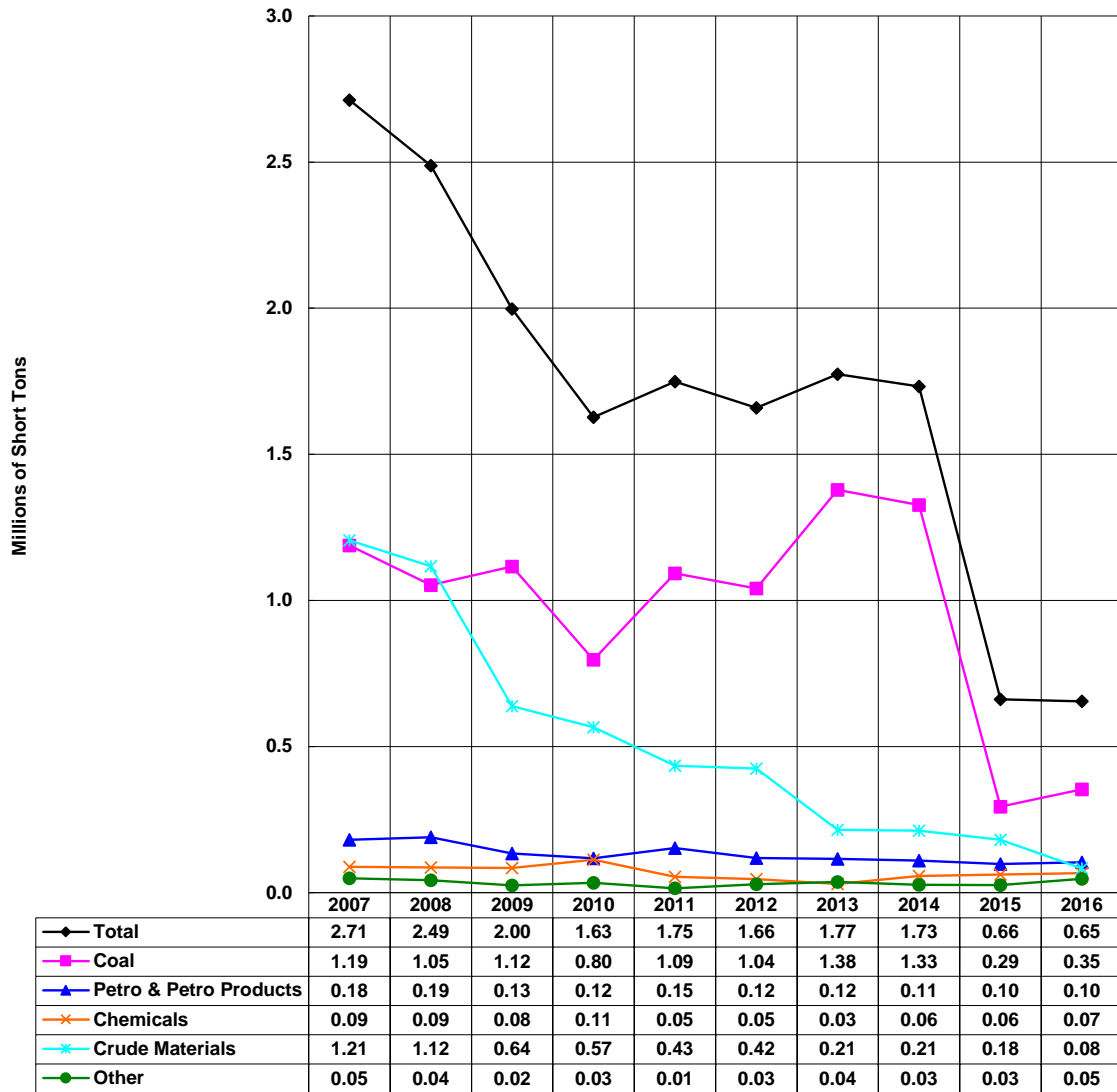
Commerce on Selected Waterways

Internal Traffic, 2007-2016

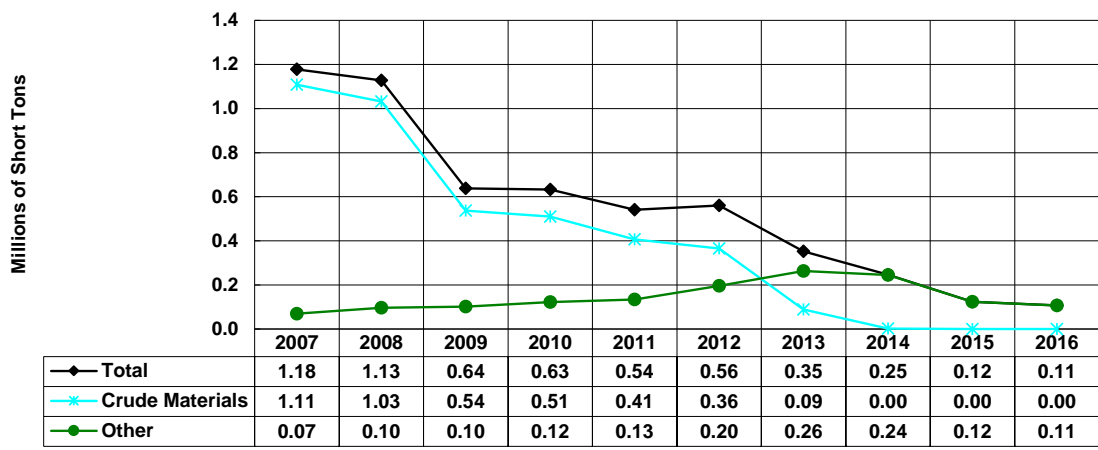


**Total Internal excludes waterway improvement materials.
 ***Includes domestic coastwise tonnage.

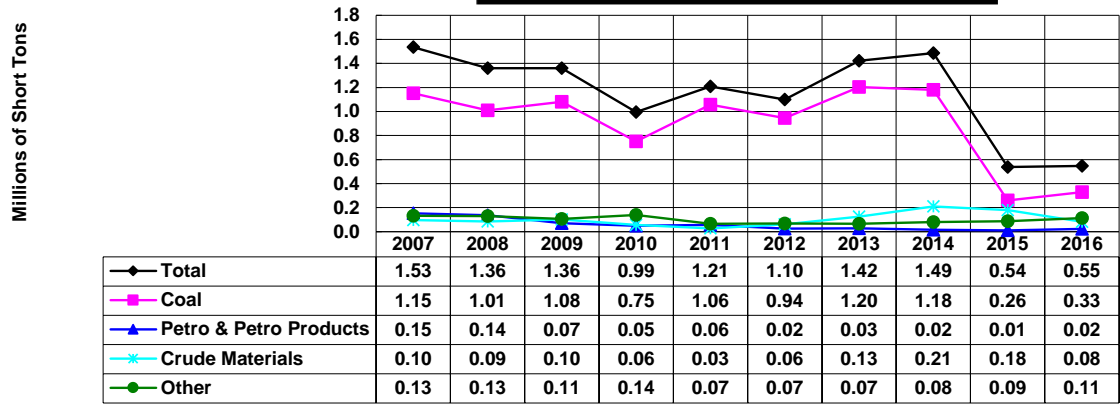
Allegheny River - Totals
2007-2016, Millions of Short Tons, By Commodity



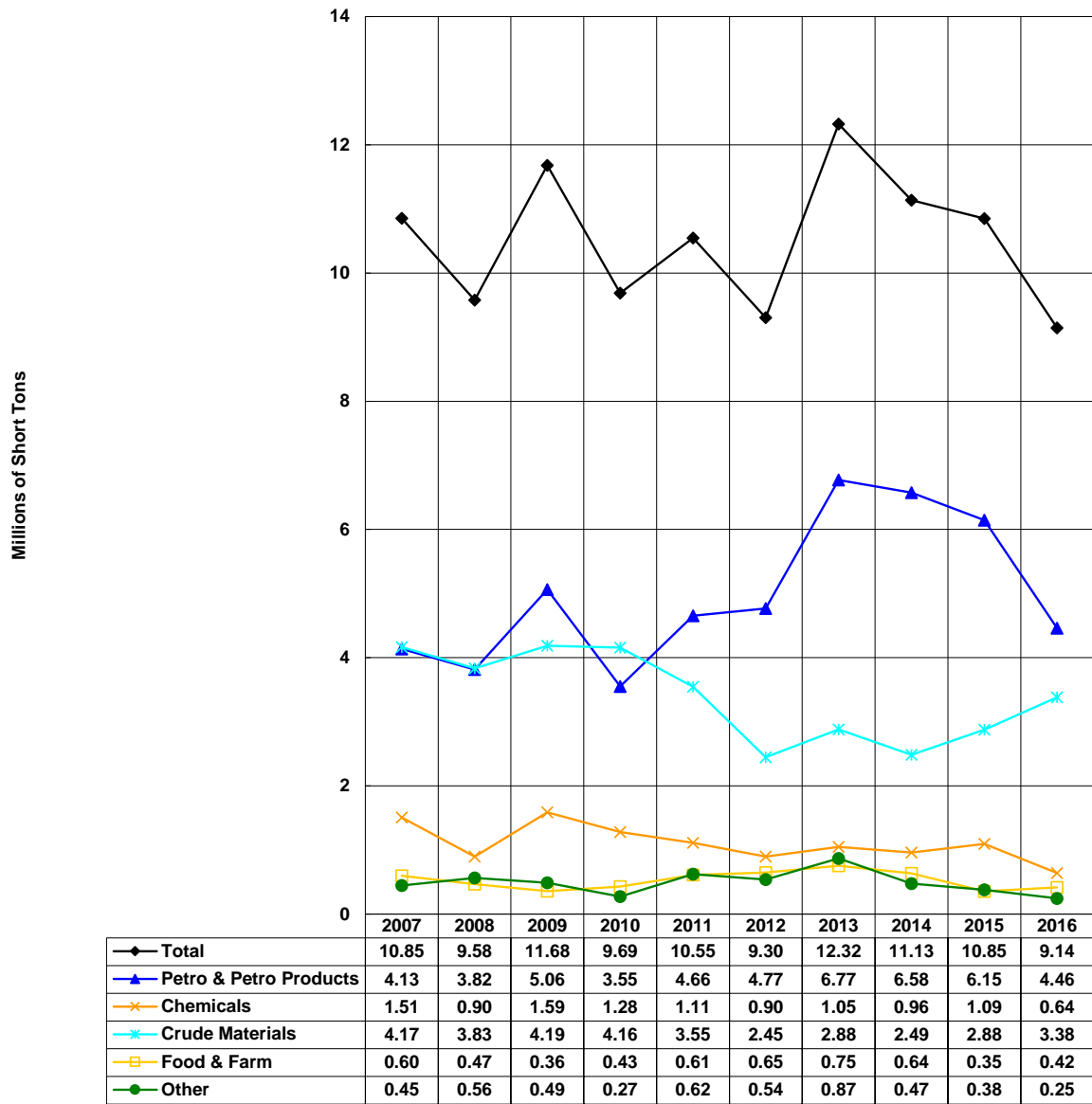
Allegheny River - Downbound
2007-2016, Millions of Short Tons, By Commodity



Allegheny River - Upbound
2007-2016, Millions of Short Tons, By Commodity

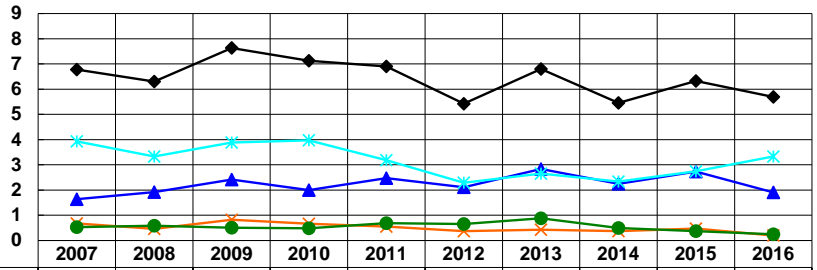


Upper Atchafalaya River - Totals
 2007-2016, Millions of Short Tons, By Commodity



Upper Atchafalaya River - Downbound 2007-2016, Millions of Short Tons, By Commodity

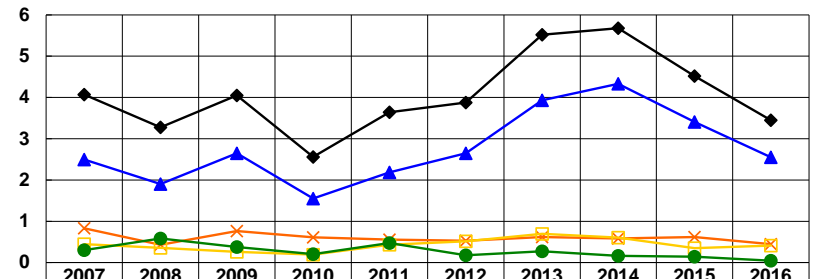
Millions of Short Tons



	2007	2008	2009	2010	2011	2012	2013	2014	2015	2016
◆ Total	6.78	6.30	7.63	7.13	6.90	5.43	6.80	5.46	6.33	5.69
▲ Petro & Petro Products	1.64	1.92	2.42	2.00	2.47	2.12	2.84	2.25	2.74	1.91
✕ Chemicals	0.68	0.47	0.82	0.67	0.55	0.37	0.43	0.38	0.48	0.20
* Crude Materials	3.93	3.33	3.89	3.97	3.18	2.29	2.65	2.34	2.74	3.34
● Other	0.53	0.59	0.50	0.49	0.69	0.65	0.88	0.50	0.38	0.25

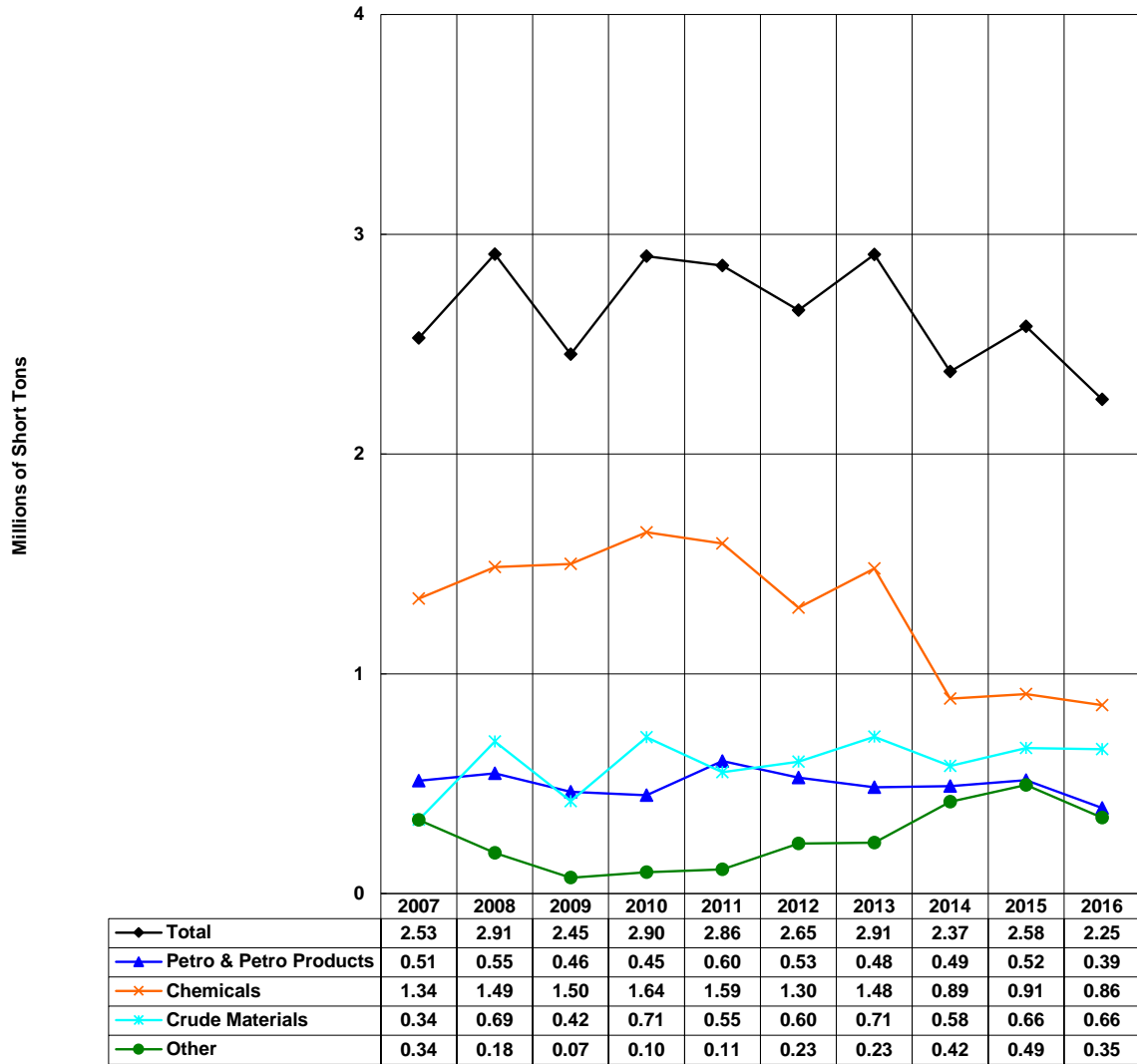
Upper Atchafalaya River - Upbound 2007-2016, Millions of Short Tons, By Commodity

Millions of Short Tons

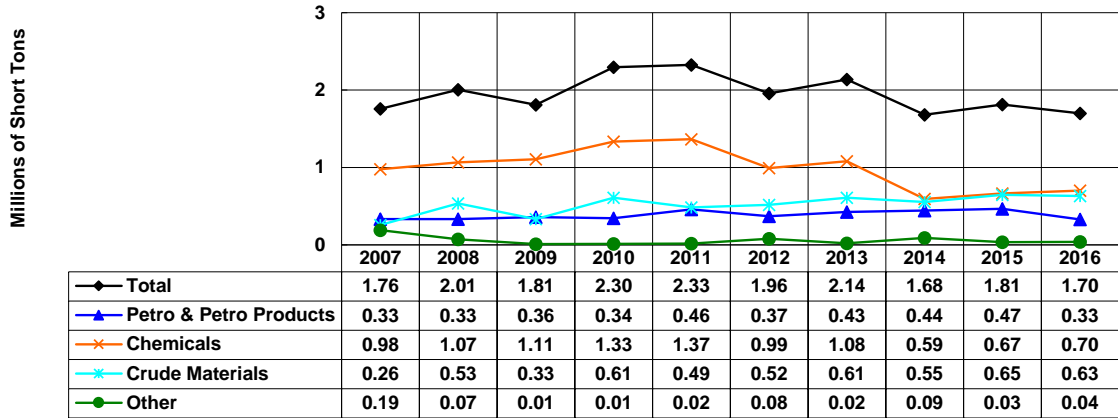


	2007	2008	2009	2010	2011	2012	2013	2014	2015	2016
◆ Total	4.07	3.27	4.05	2.56	3.64	3.88	5.52	5.68	4.52	3.45
▲ Petro & Petro Products	2.49	1.90	2.65	1.55	2.18	2.65	3.93	4.33	3.41	2.55
✕ Chemicals	0.83	0.43	0.76	0.61	0.56	0.53	0.62	0.58	0.62	0.44
◻ Food & Farm	0.44	0.36	0.26	0.19	0.43	0.52	0.70	0.60	0.35	0.41
● Other	0.30	0.58	0.37	0.20	0.47	0.18	0.27	0.16	0.14	0.04

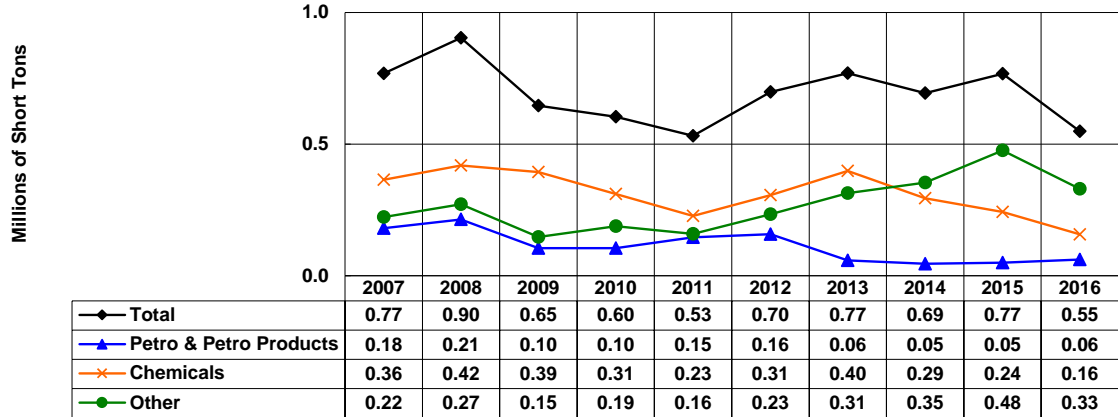
Atlantic Intracoastal Waterway Totals 2007-2016, Millions of Short Tons, By Commodity



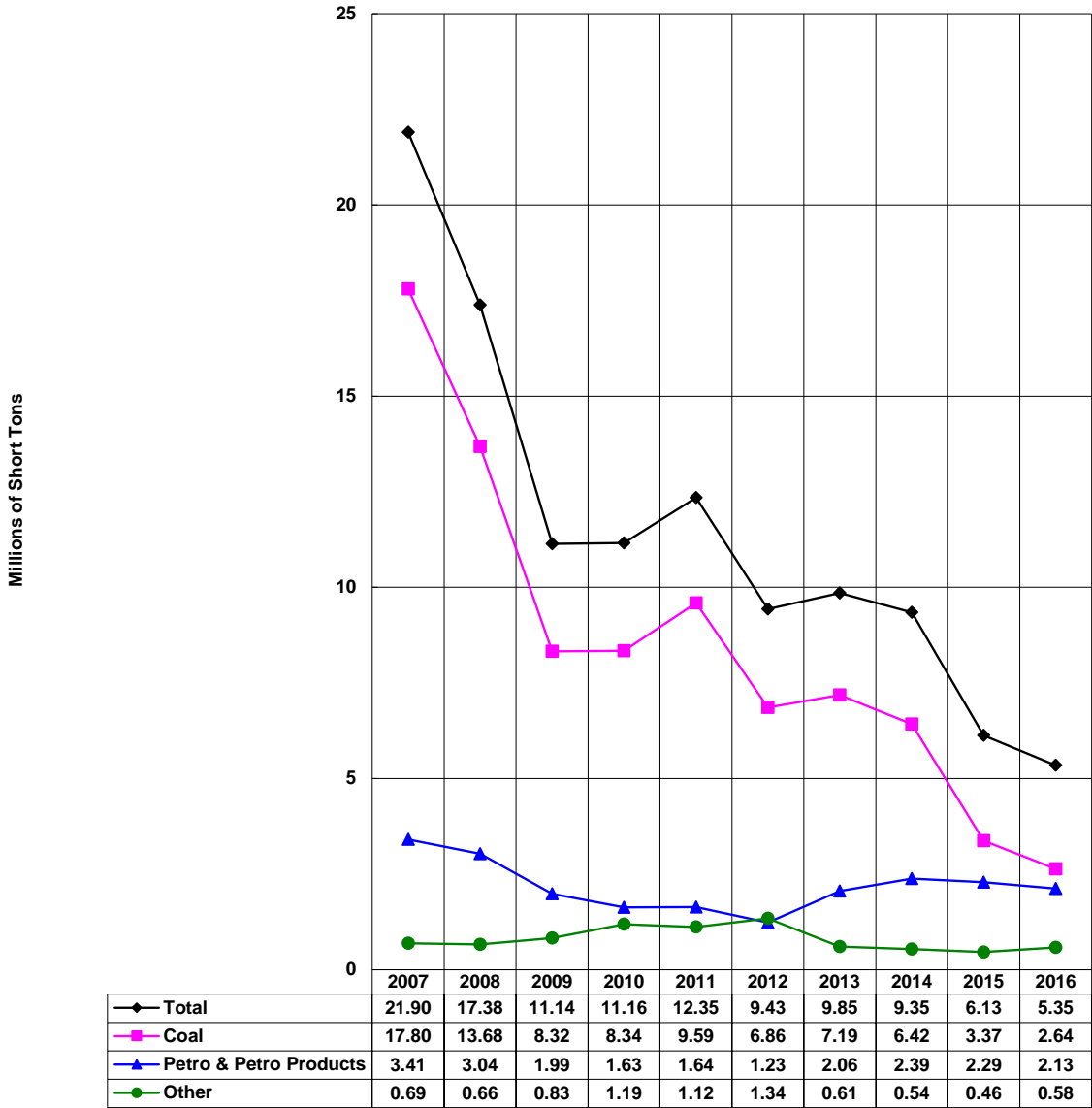
Atlantic Intracoastal Waterway
Southbound 2007-2016, Millions of Short Tons, By Commodity



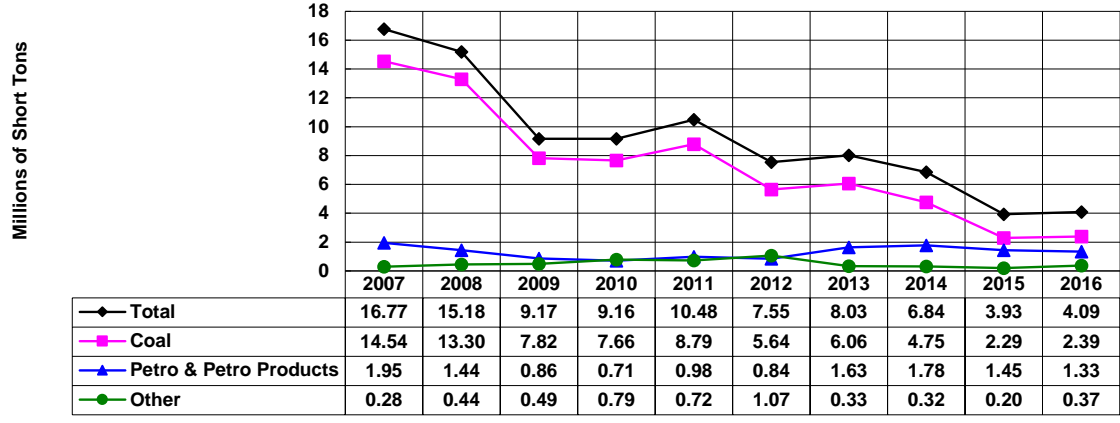
Atlantic Intracoastal Waterway
Northbound 2007-2016, Millions of Short Tons, By Commodity



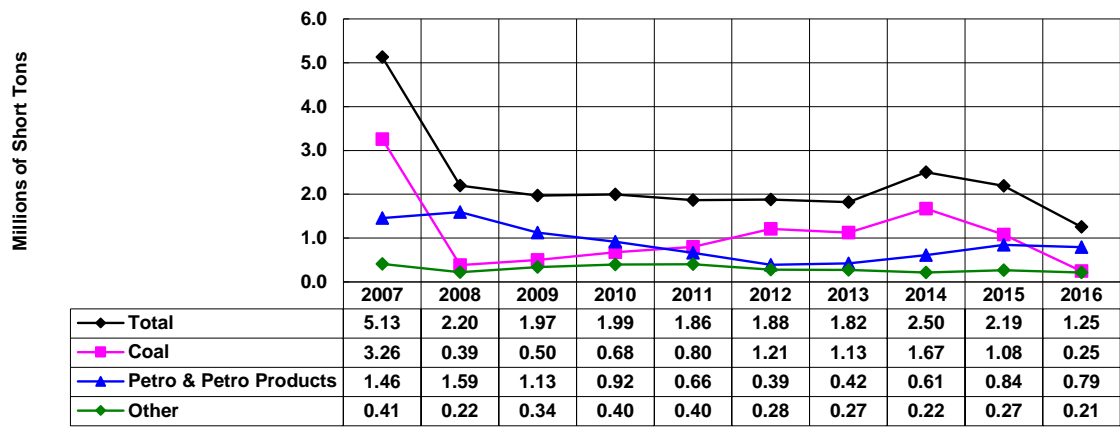
Big Sandy River - Totals
 2007-2016, Millions of Short Tons, By Commodity



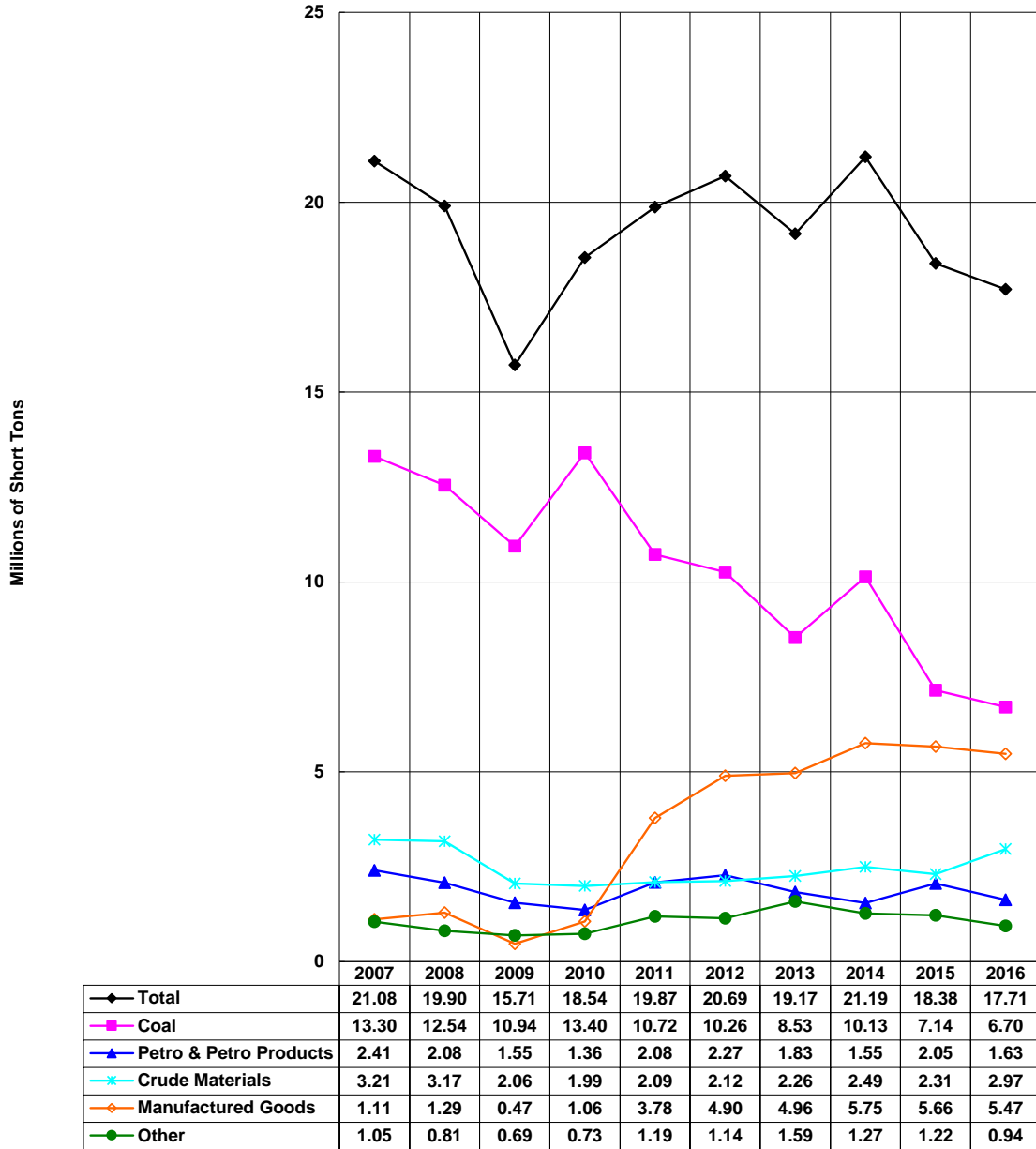
Big Sandy River - Downbound
2007-2016, Millions of Short Tons, By Commodity



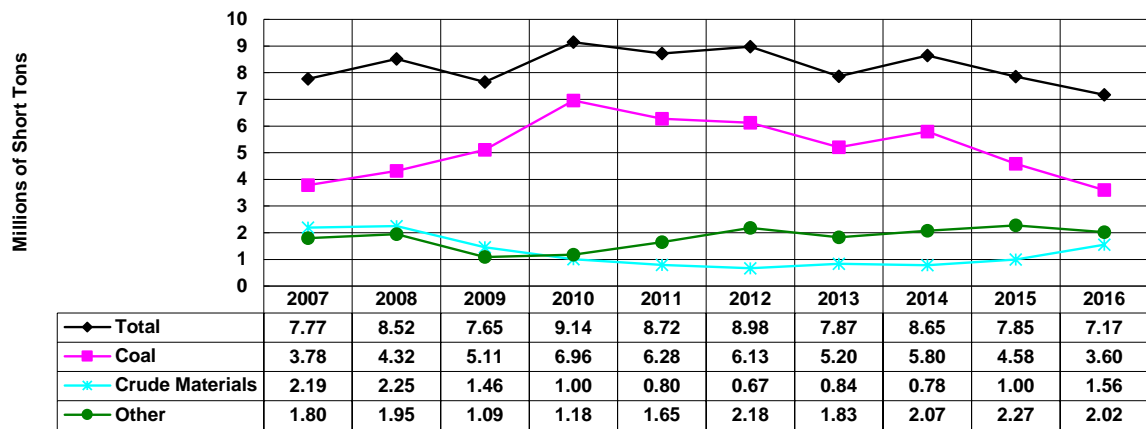
Big Sandy River - Upbound
2007-2016, Millions of Short Tons, By Commodity



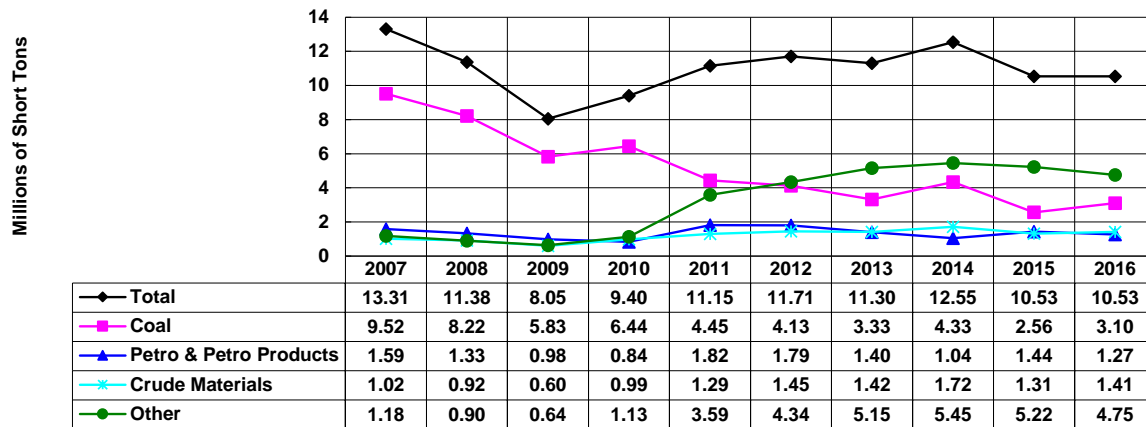
Black Warrior & Tombigbee Rivers Totals 2007-2016, Millions of Short Tons, By Commodity



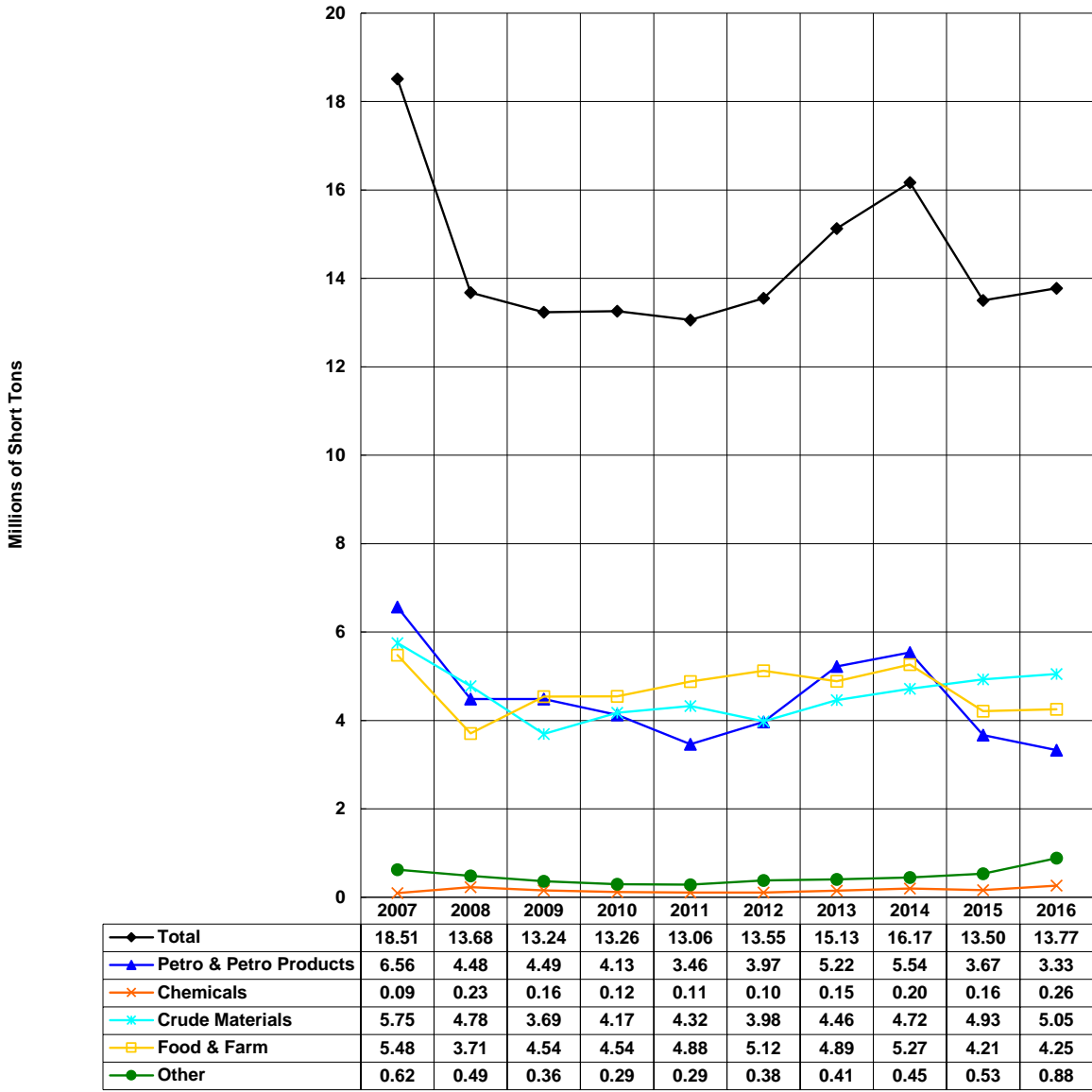
Black Warrior & Tombigbee Rivers
Downbound, 2007-2016, Millions of Short Tons, By Commodity



Black Warrior & Tombigbee Rivers
Upbound, 2007-2016, Millions of Short Tons, By Commodity

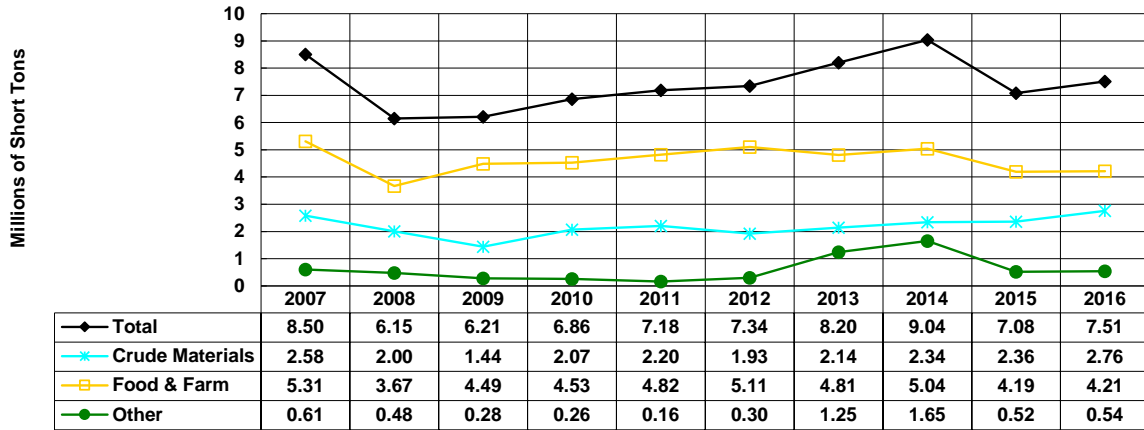


Columbia River - Totals
2007-2016, Millions of Short Tons, By Commodity



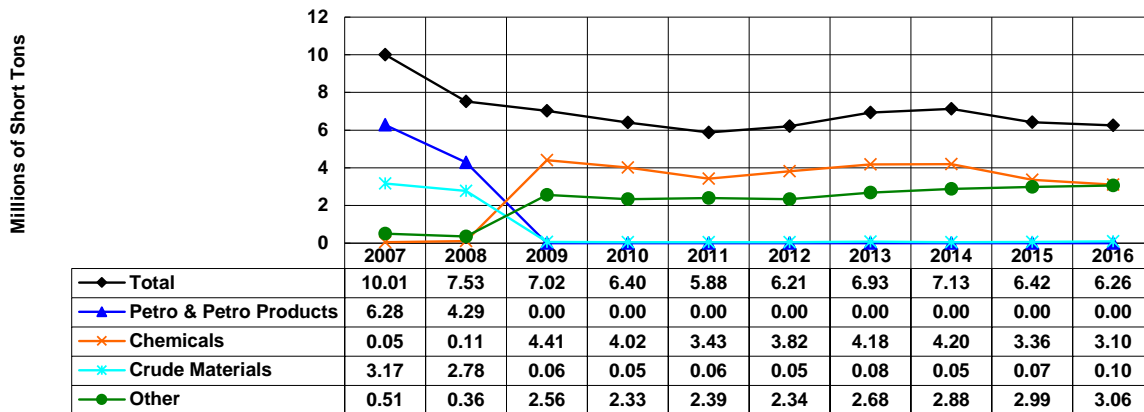
Domestic tonnage only (including coastwise).

Columbia River - Downbound
2007-2016, Millions of Short Tons, By Commodity



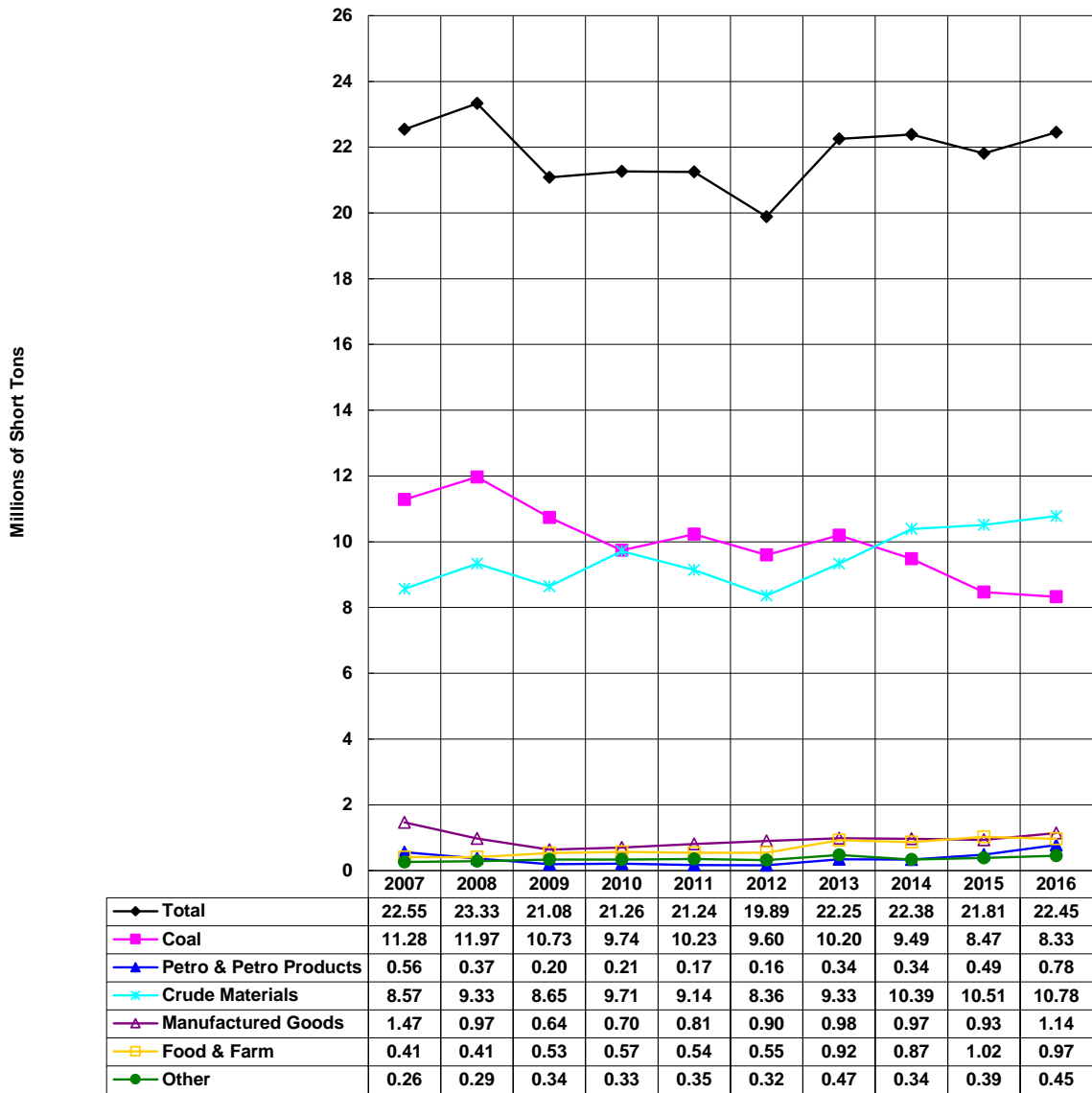
Domestic tonnage only (including coastwise).

Columbia River - Upbound
2007-2016, Millions of Short Tons, By Commodity

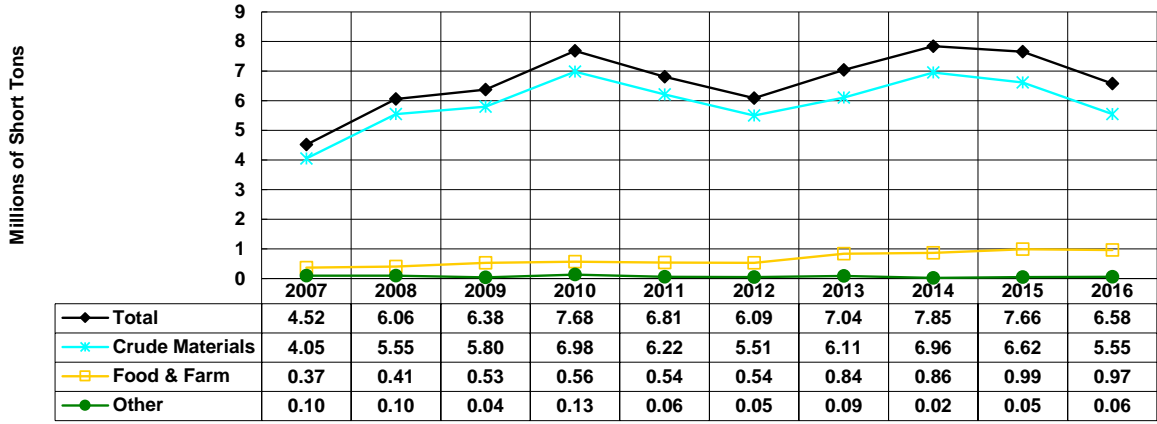


Domestic tonnage only (including coastwise).

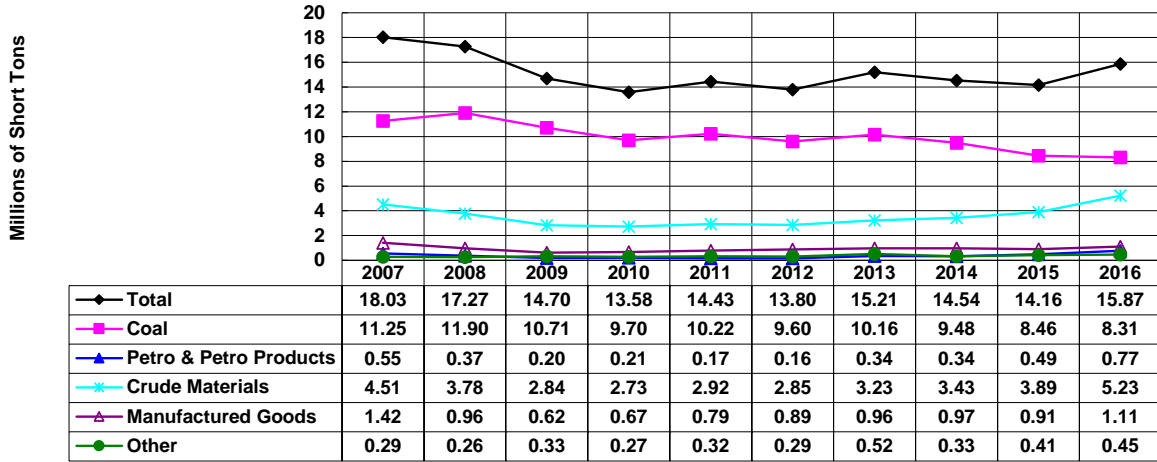
Cumberland River - Totals
2007-2016, Millions of Short Tons, By Commodity



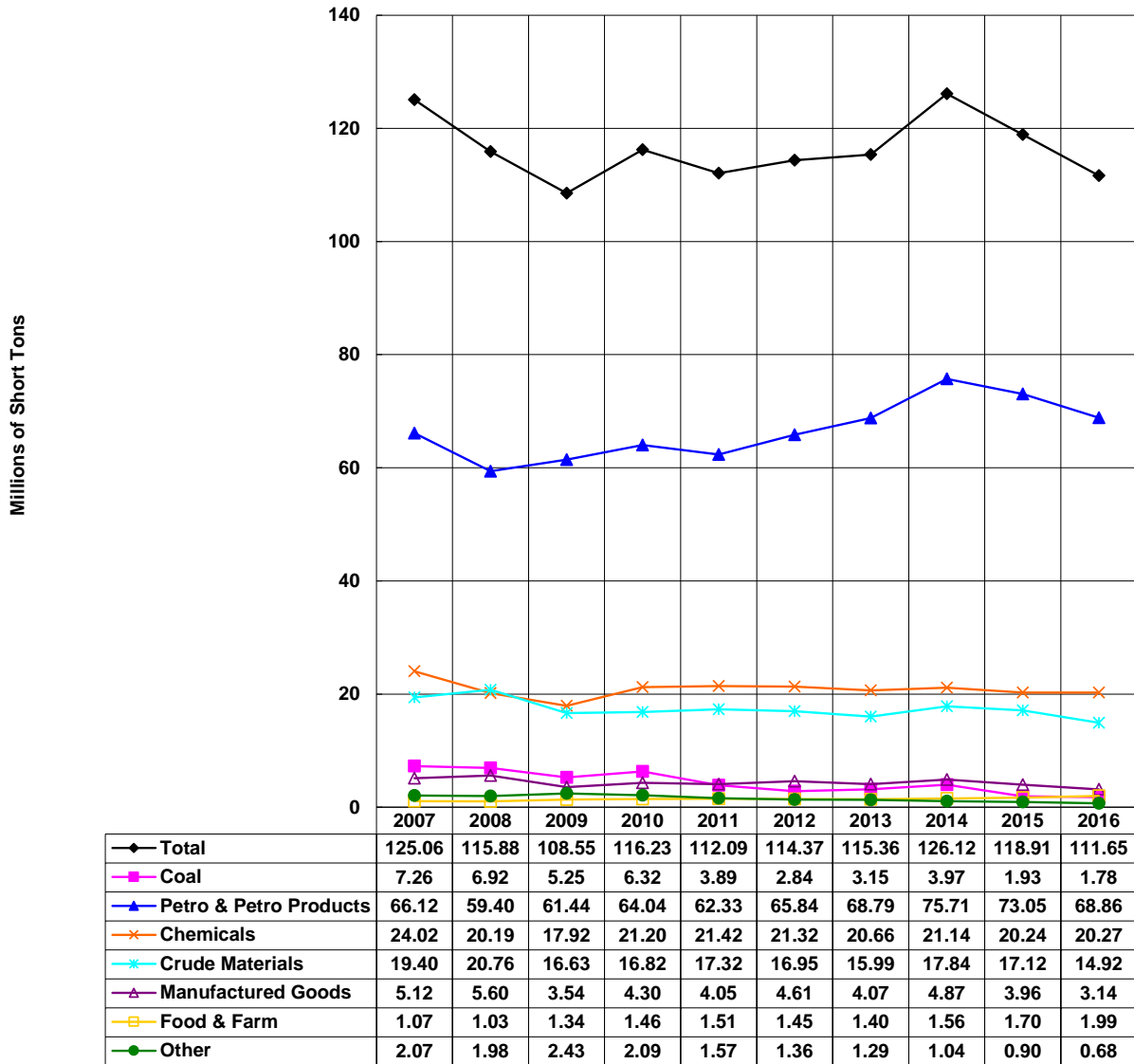
Cumberland River - Downbound 2007-2016, Millions of Short Tons, By Commodity



Cumberland River - Upbound 2007-2016, Millions of Short Tons, By Commodity

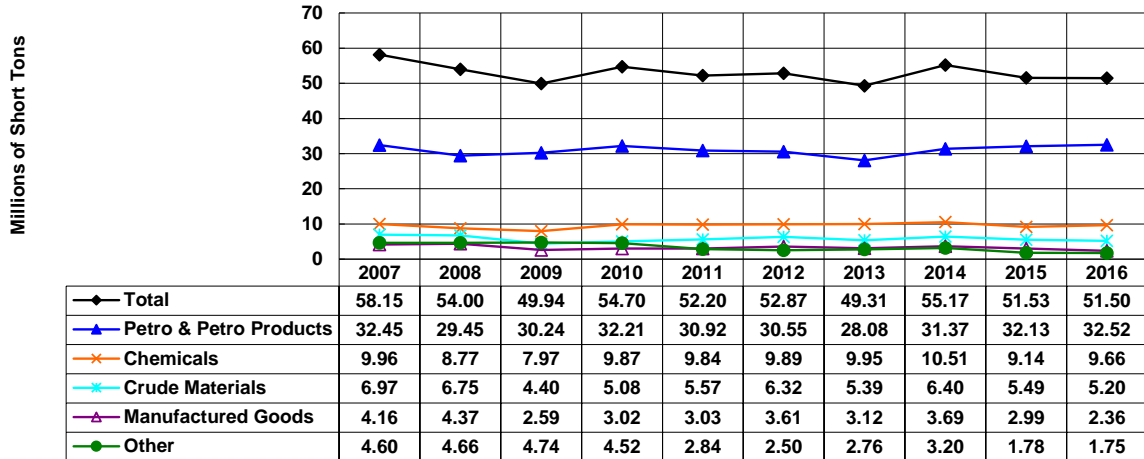


Gulf Intracoastal Waterway Totals 2007-2016, Millions of Short Tons, By Commodity



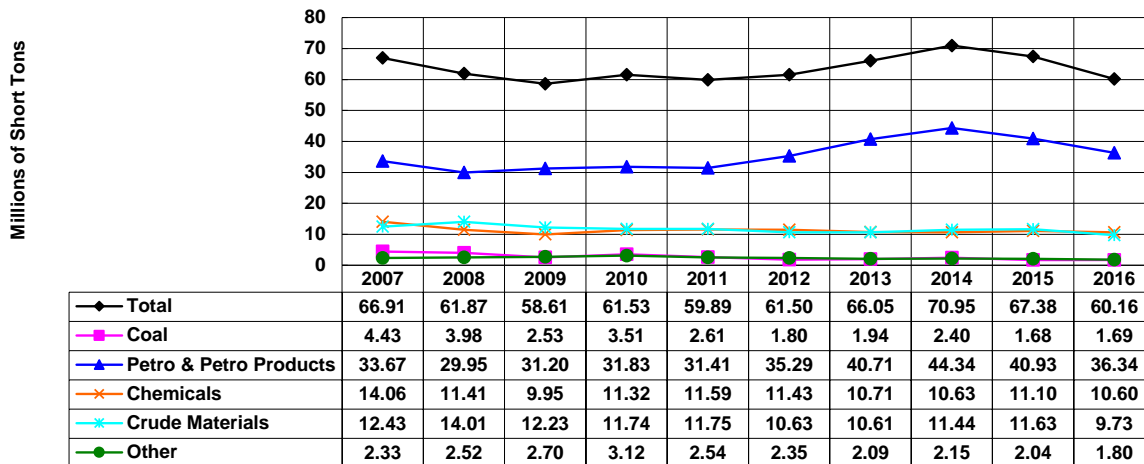
Includes coastwise tonnage.

Gulf Intracoastal Waterway Westbound 2007-2016, Millions of Short Tons, By Commodity



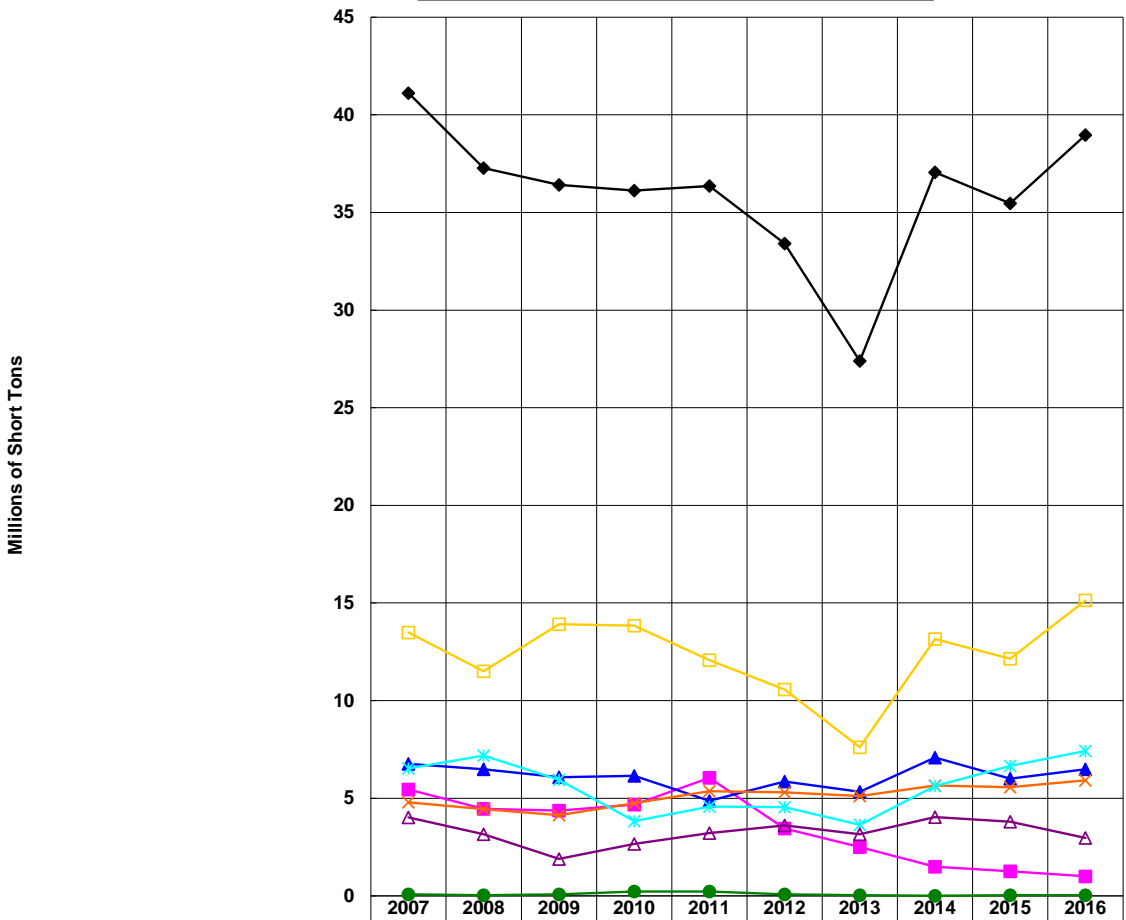
Includes coastwise tonnage.

Gulf Intracoastal Waterway Eastbound 2007-2016, Millions of Short Tons, By Commodity



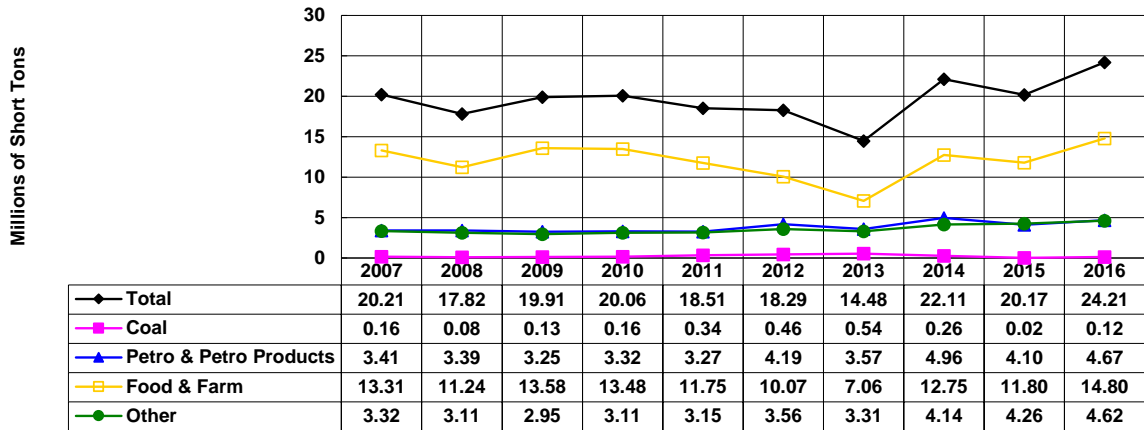
Includes coastwise tonnage.

Illinois Waterway - Totals
 2007-2016, Millions of Short Tons, By Commodity

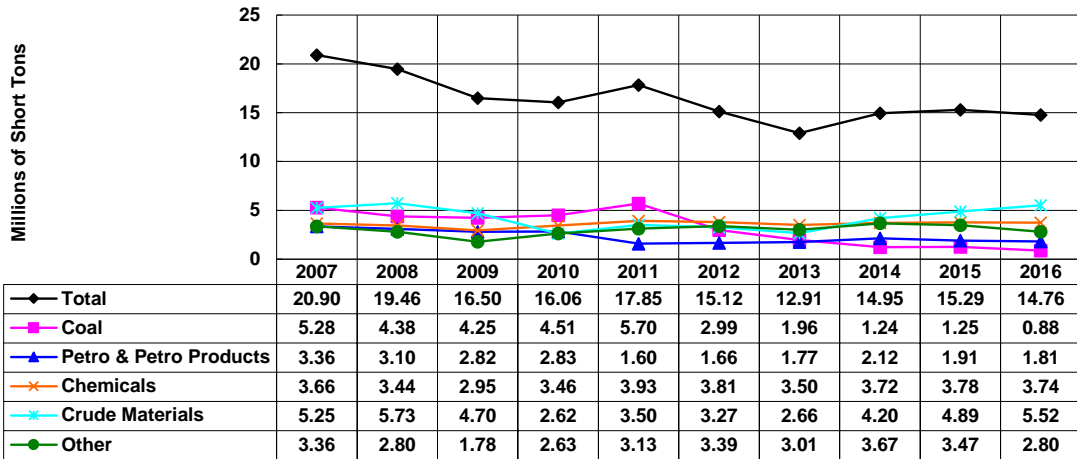


◆ Total	41.12	37.28	36.41	36.12	36.36	33.41	27.39	37.06	35.47	38.97
■ Coal	5.44	4.46	4.38	4.67	6.04	3.45	2.49	1.49	1.27	1.00
▲ Petro & Petro Products	6.77	6.49	6.07	6.14	4.87	5.85	5.34	7.09	6.01	6.49
✕ Chemicals	4.80	4.44	4.13	4.75	5.37	5.30	5.11	5.66	5.56	5.92
✧ Crude Materials	6.53	7.19	5.95	3.83	4.57	4.54	3.64	5.63	6.66	7.42
△ Manufactured Goods	4.02	3.15	1.89	2.66	3.22	3.62	3.16	4.04	3.79	2.97
□ Food & Farm	13.49	11.51	13.92	13.84	12.07	10.57	7.61	13.16	12.15	15.13
● Other	0.08	0.04	0.08	0.22	0.22	0.08	0.03	0.01	0.03	0.03

Illinois Waterway - Downbound 2007-2016, Millions of Short Tons, By Commodity

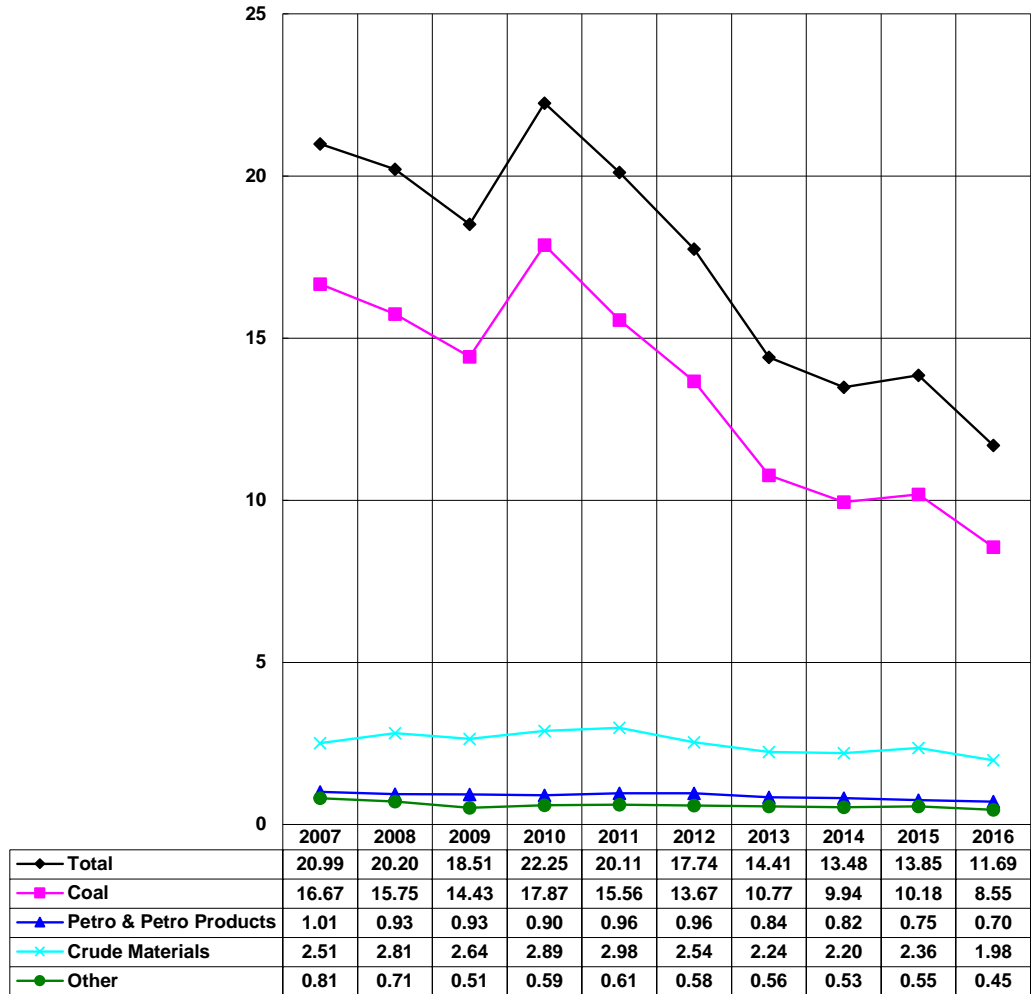


Illinois Waterway - Upbound 2007-2016, Millions of Short Tons, By Commodity

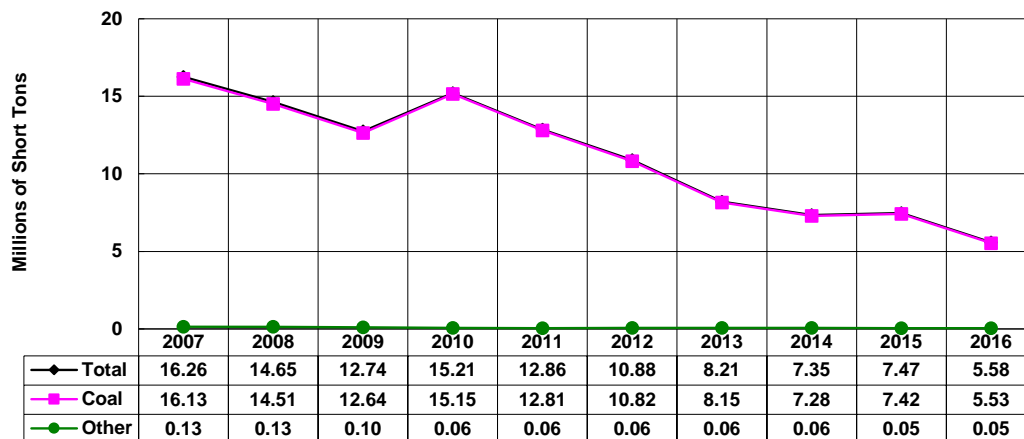


Kanawha River - Totals
2007-2016, Millions of Short Tons, By Commodity

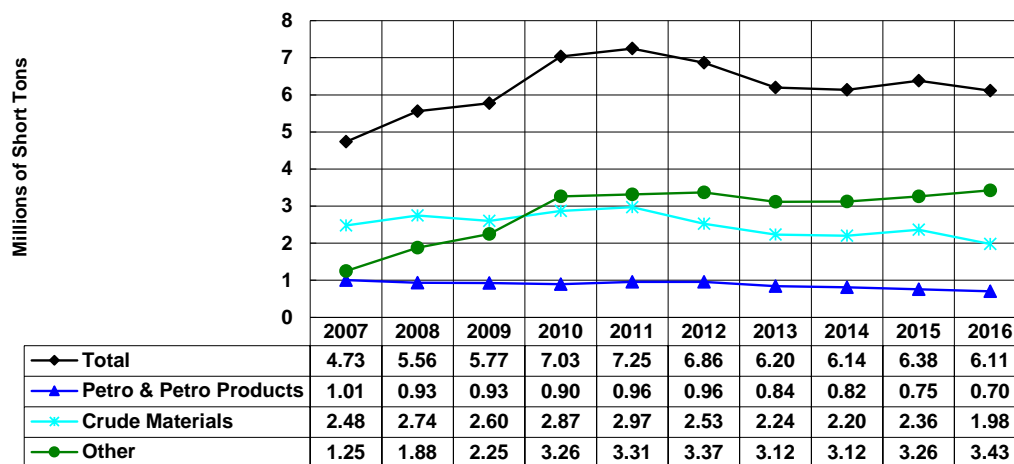
Millions of Short Tons



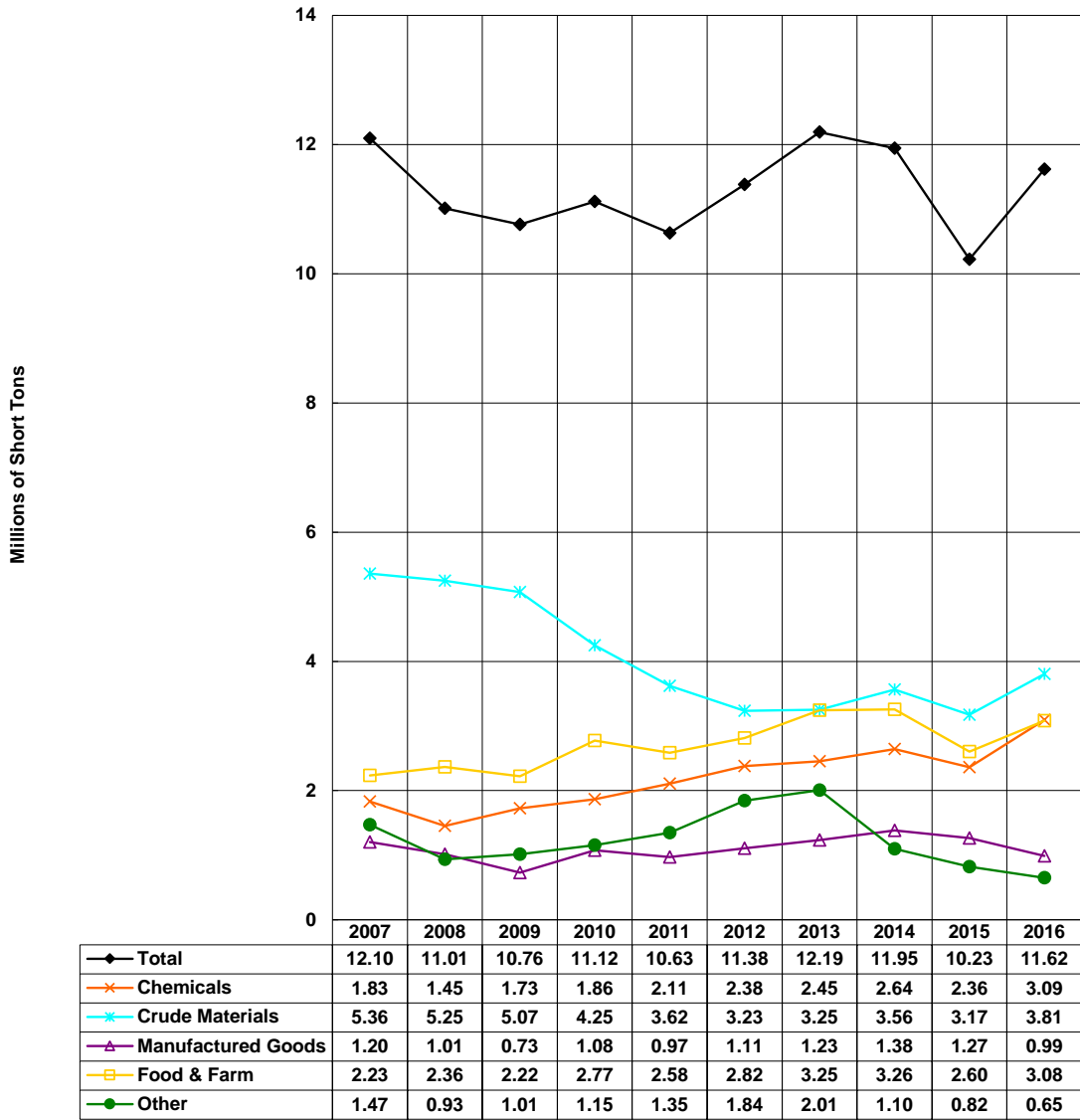
Kanawha River - Downbound
2007-2016, Millions of Short Tons, By Commodity



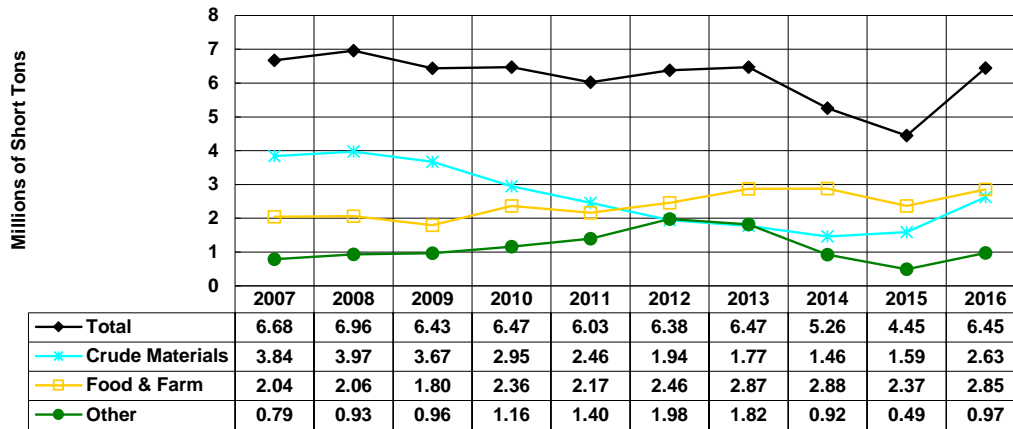
Kanawha River - Upbound
2007-2016, Millions of Short Tons, By Commodity



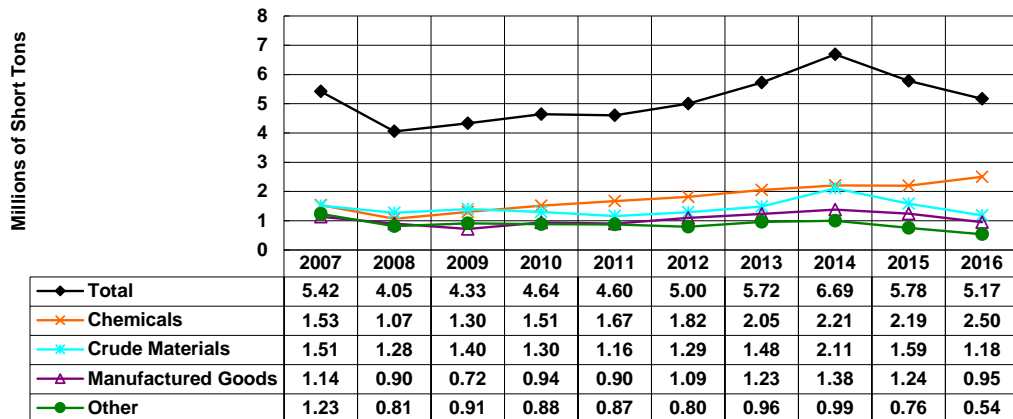
McClellan-Kerr Waterway - Totals
 2007-2016, Millions of Short Tons, By Commodity



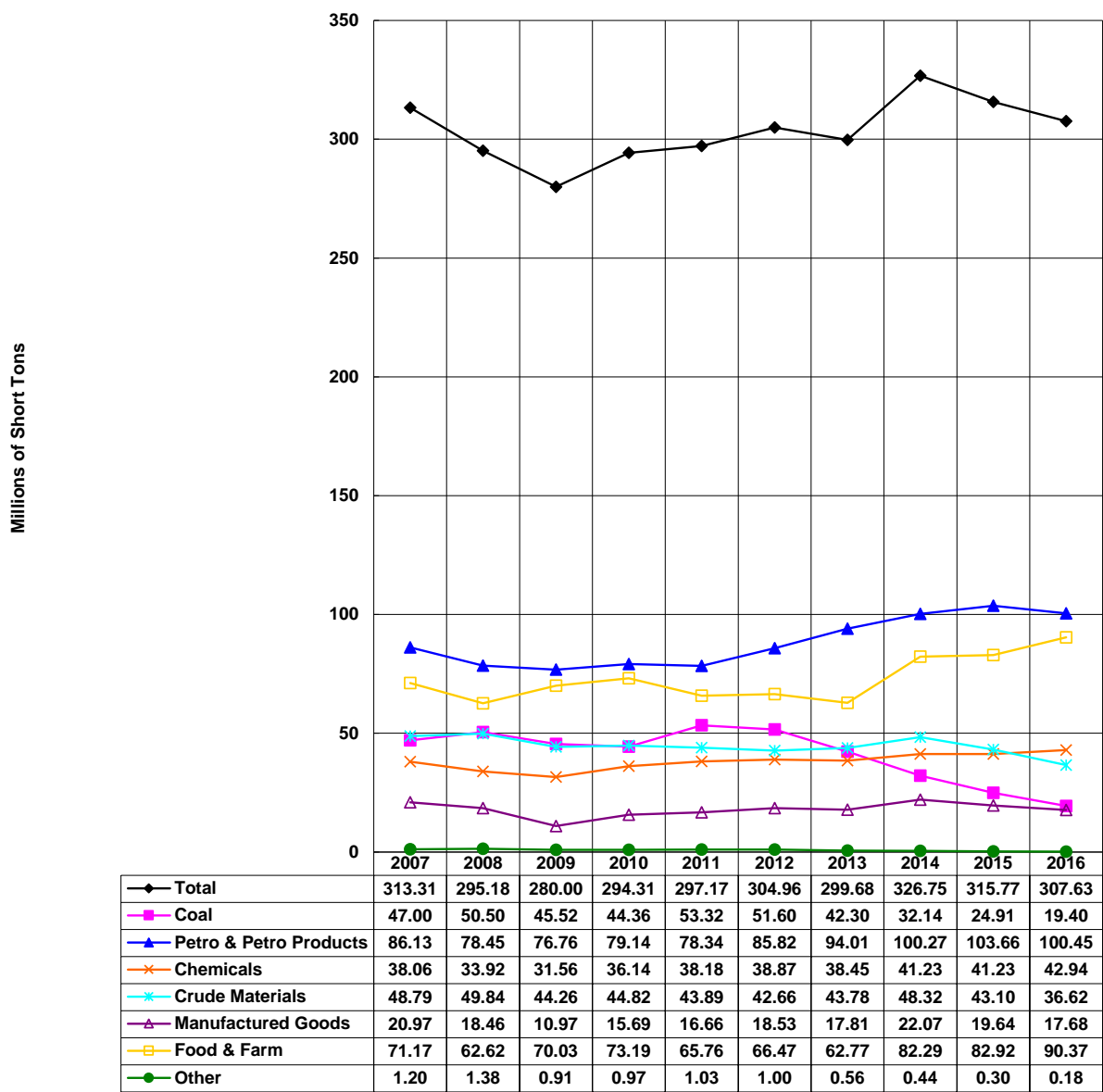
McClellan-Kerr Waterway - Downbound 2007-2016, Millions of Short Tons, By Commodity



McClellan-Kerr Waterway - Upbound 2007-2016, Millions of Short Tons, By Commodity

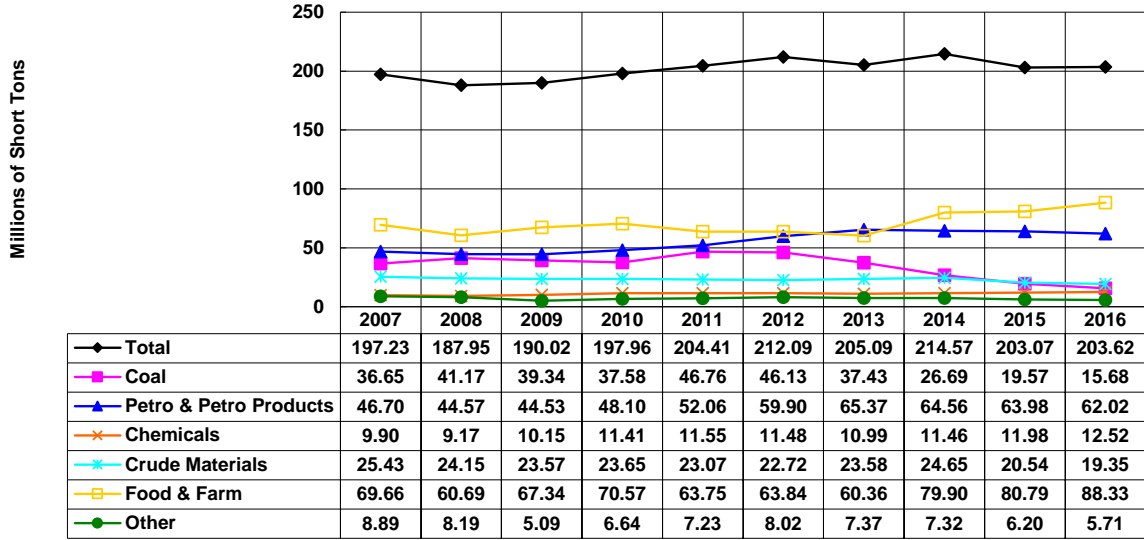


Mississippi River - Totals 2007-2016, Millions of Short Tons, By commodity



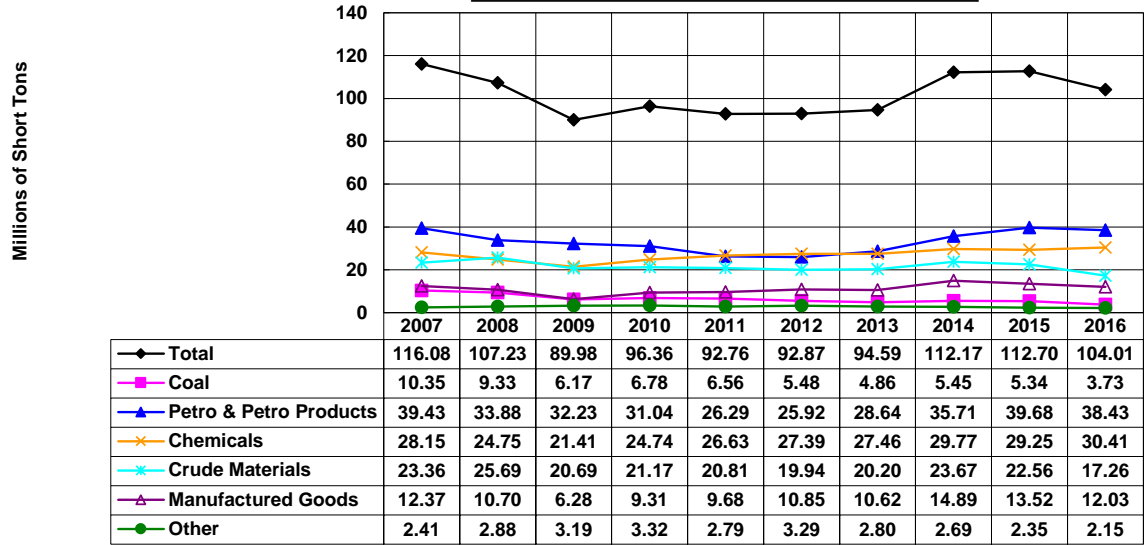
Domestic tonnage only (including coastwise).

Mississippi River - Downbound
2007-2016, Millions of Short Tons, By Commodity



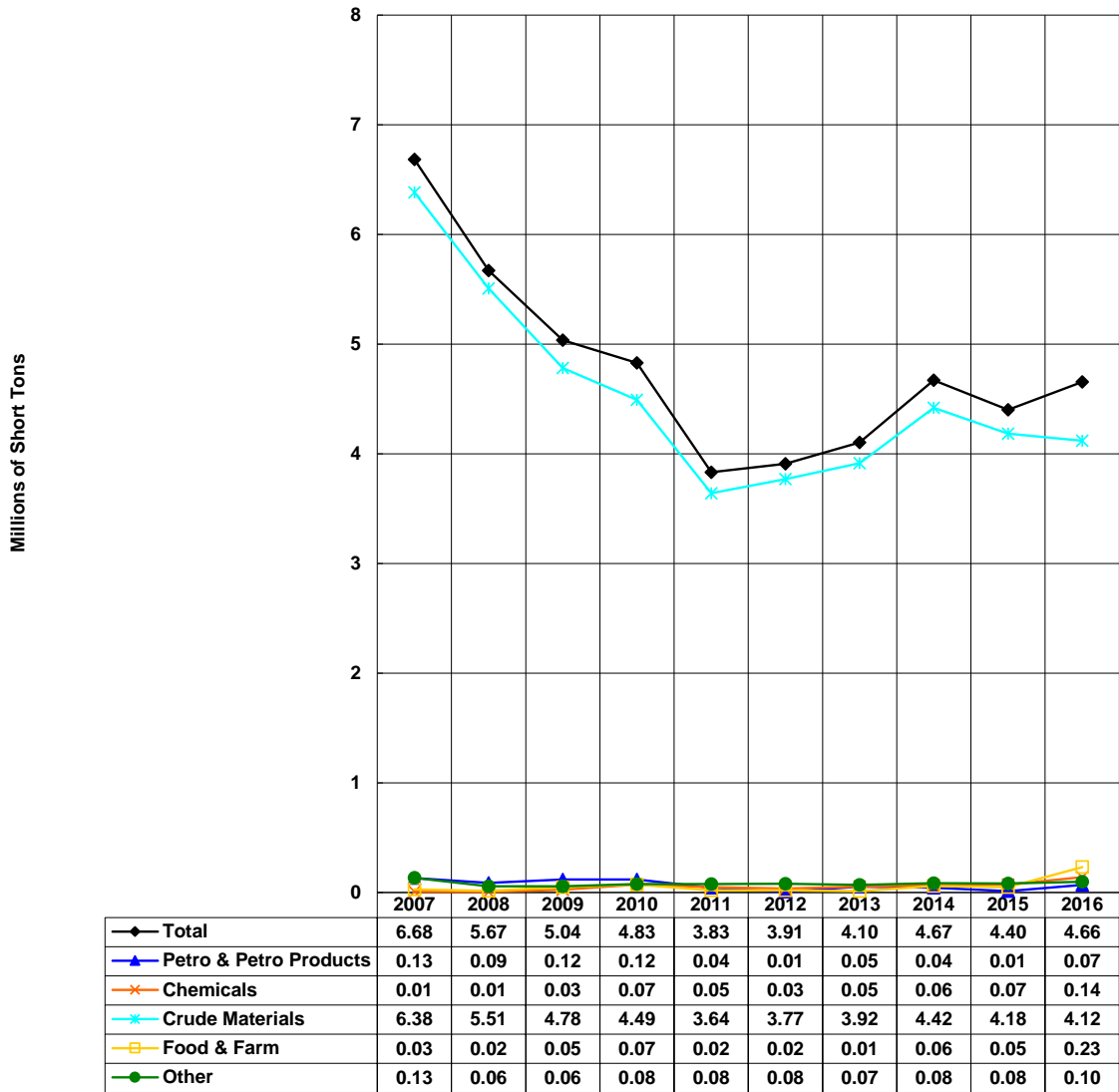
Domestic tonnage only (including coastwise).

Mississippi River - Upbound
2007-2016, Millions of Short Tons, By Commodity

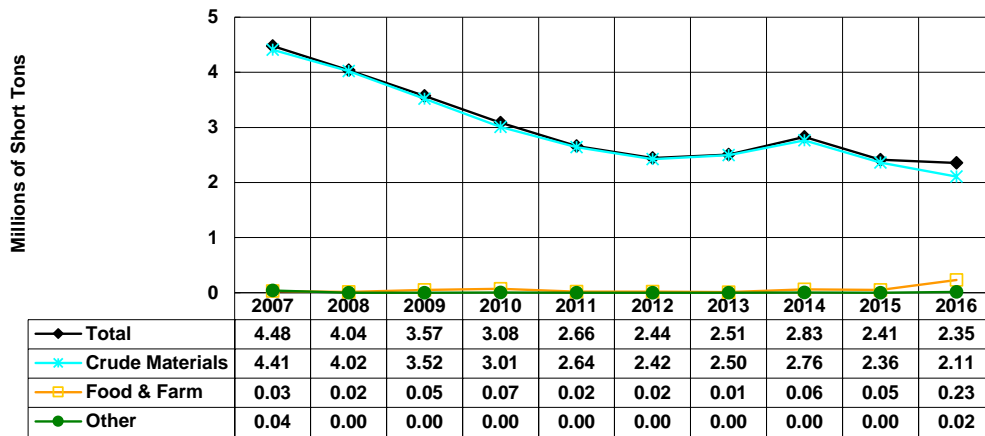


Domestic tonnage only (including coastwise).

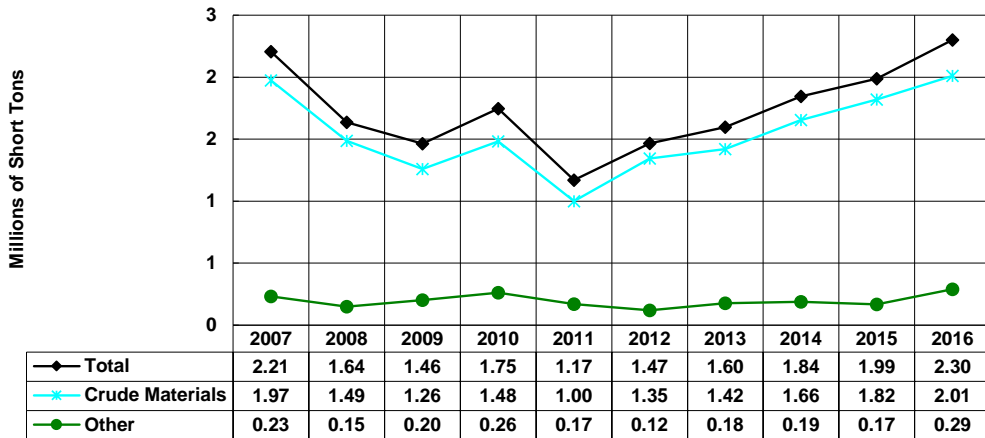
Missouri River Totals
2007-2016, Millions of Short Tons, By Commodity



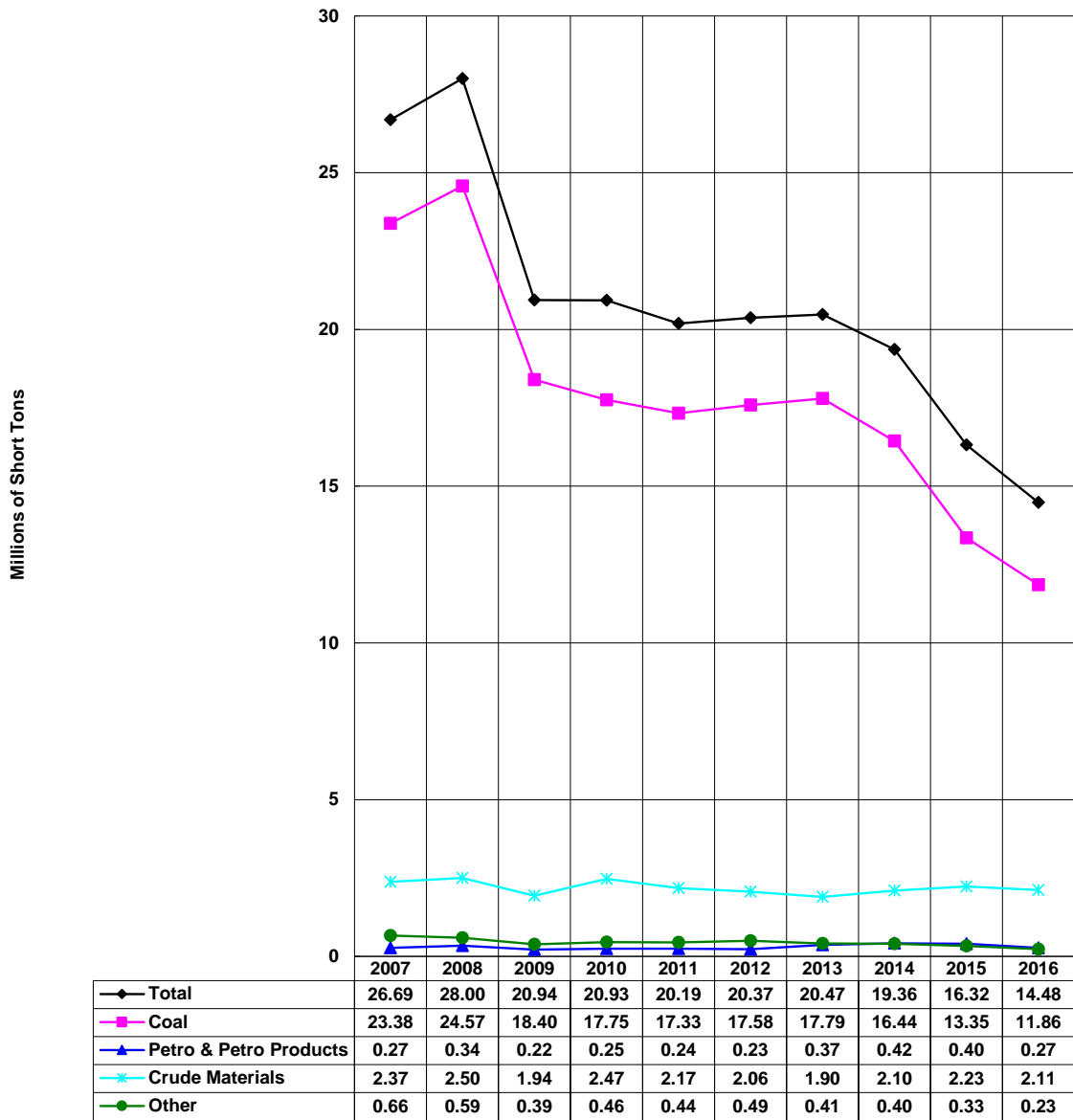
Missouri River Downbound
2007-2016, Millions of Short Tons, By Commodity



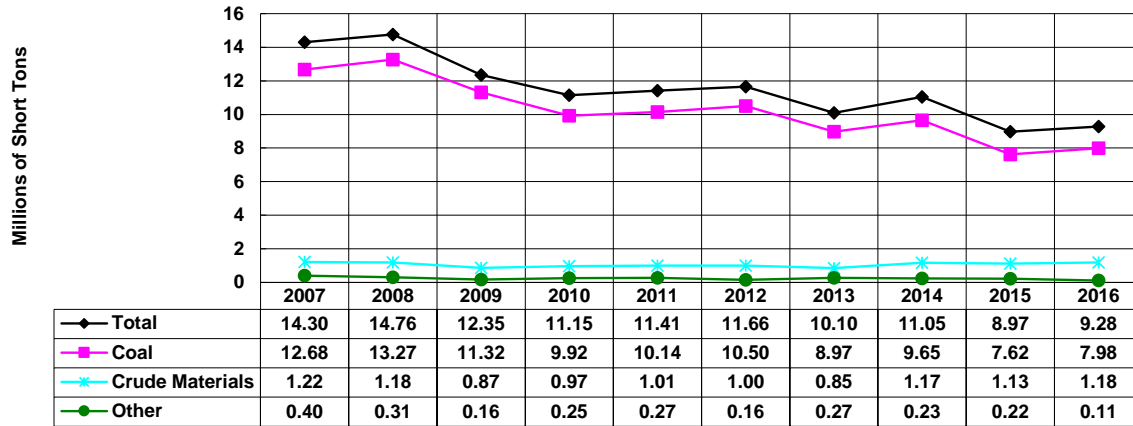
Missouri River Upbound
2007-2016, Millions of Short Tons, By Commodity



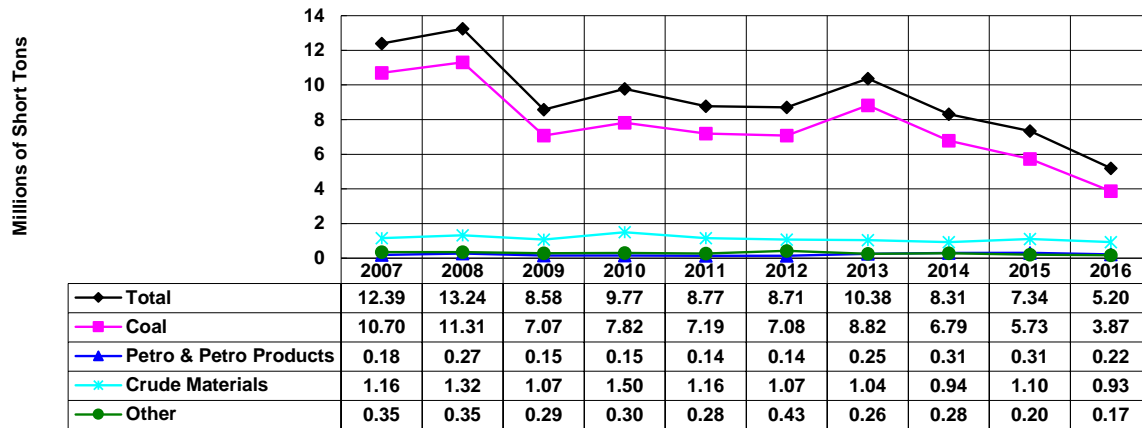
Monongahela River - Totals
2007-2016, Millions of Short Tons, By Commodity



Monongahela River - Downbound 2007-2016, Millions of Short Tons, By Commodity

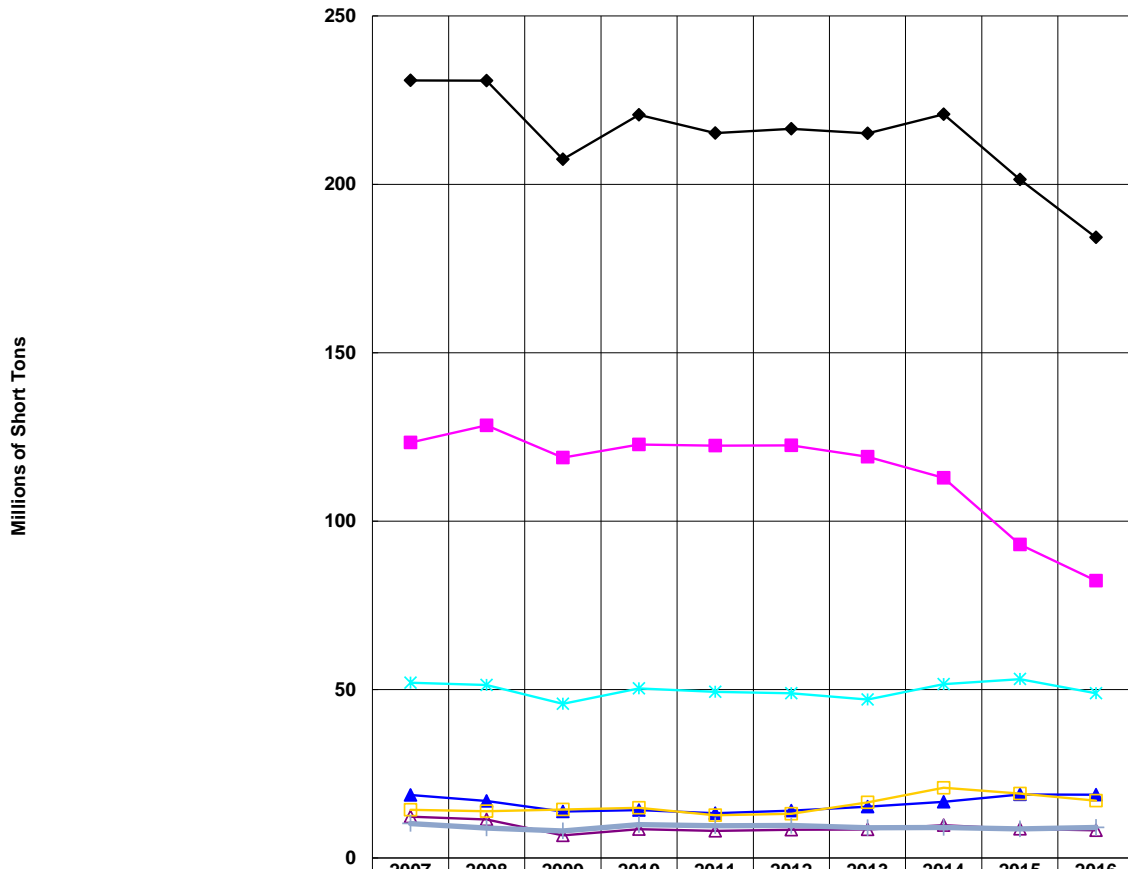


Monongahela River - Upbound 2007-2016, Millions of Short Tons, By Commodity



Ohio River - Totals

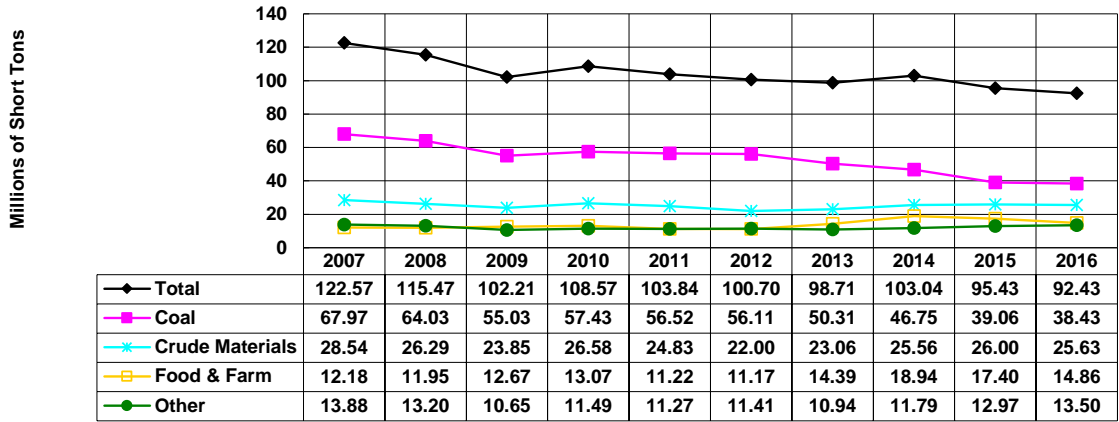
2007-2016, Millions of Short Tons, By Commodity



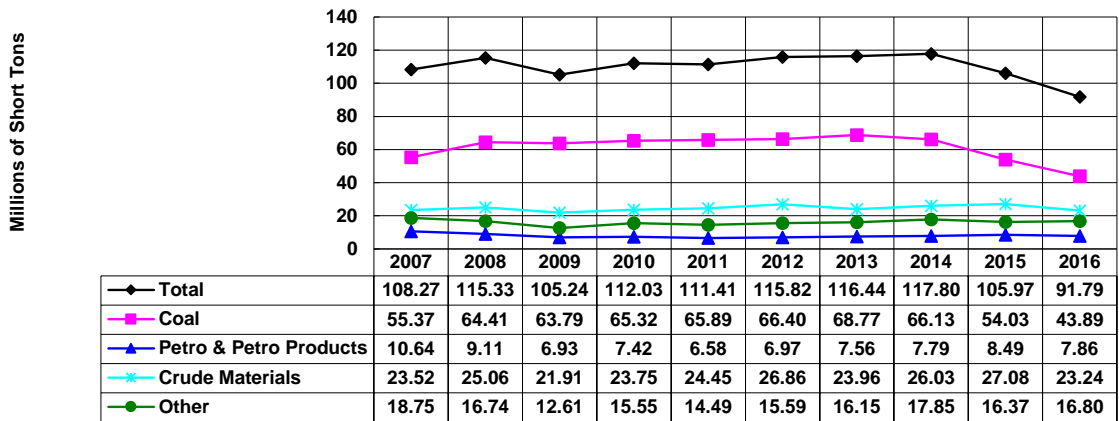
Millions of Short Tons

	2007	2008	2009	2010	2011	2012	2013	2014	2015	2016
◆ Total	230.84	230.80	207.45	220.59	215.25	216.51	215.15	220.84	201.40	184.21
■ Coal	123.34	128.44	118.82	122.75	122.41	122.51	119.08	112.88	93.09	82.32
▲ Petro & Petro Products	18.70	16.91	13.77	14.18	13.29	14.04	15.22	16.70	18.85	18.82
* Crude Materials	52.05	51.36	45.76	50.32	49.28	48.86	47.02	51.59	53.08	48.87
▲ Manufactured Goods	12.26	11.40	6.71	8.55	8.04	8.36	8.44	9.75	8.61	8.19
□ Food & Farm	14.29	13.85	14.37	14.90	12.68	13.08	16.45	20.85	19.15	16.98
◆ Other	10.21	8.84	8.01	9.89	9.56	9.65	8.93	9.06	8.62	9.05

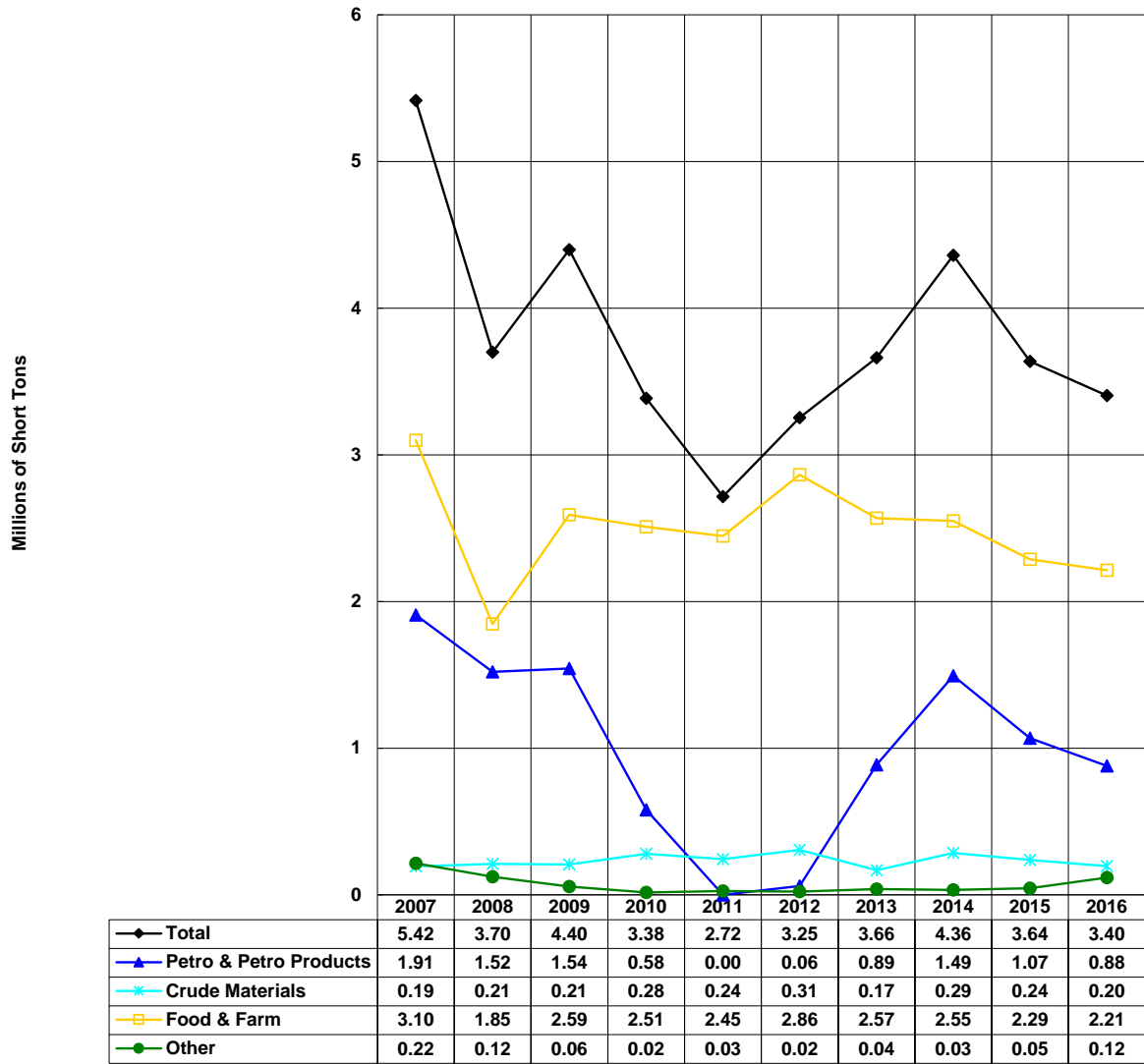
Ohio River - Downbound
2007-2016, Millions of Short Tons, By Commodity



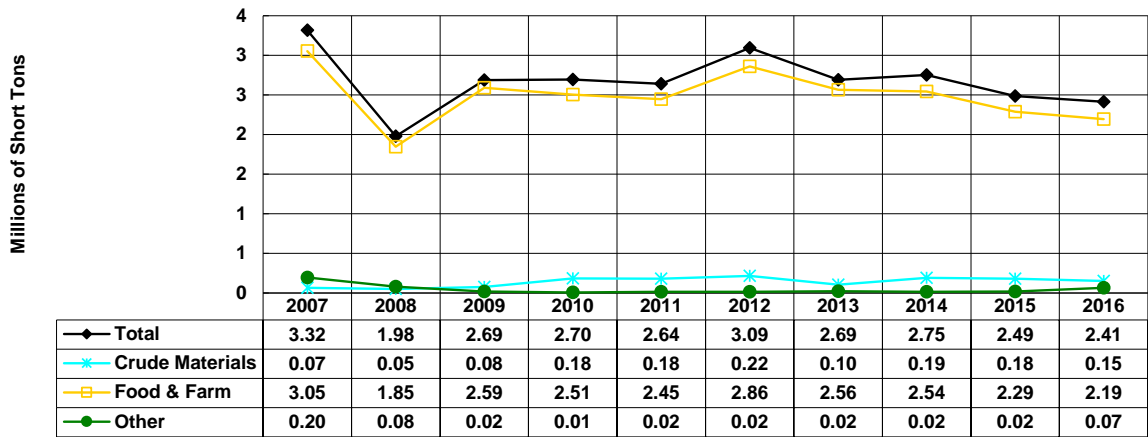
Ohio River - Upbound
2007-2016, Millions of Short Tons, By Commodity



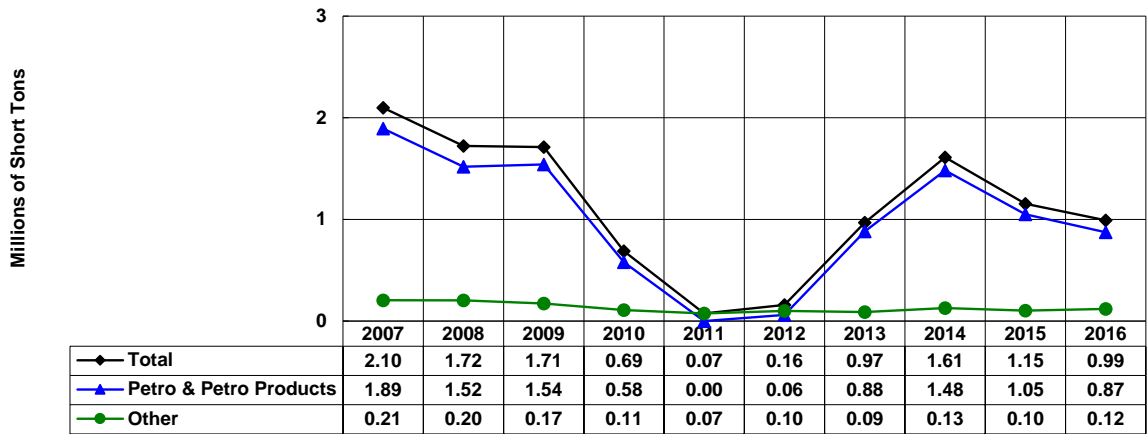
Snake River - Totals
2007-2016, Millions of Short Tons, By Commodity



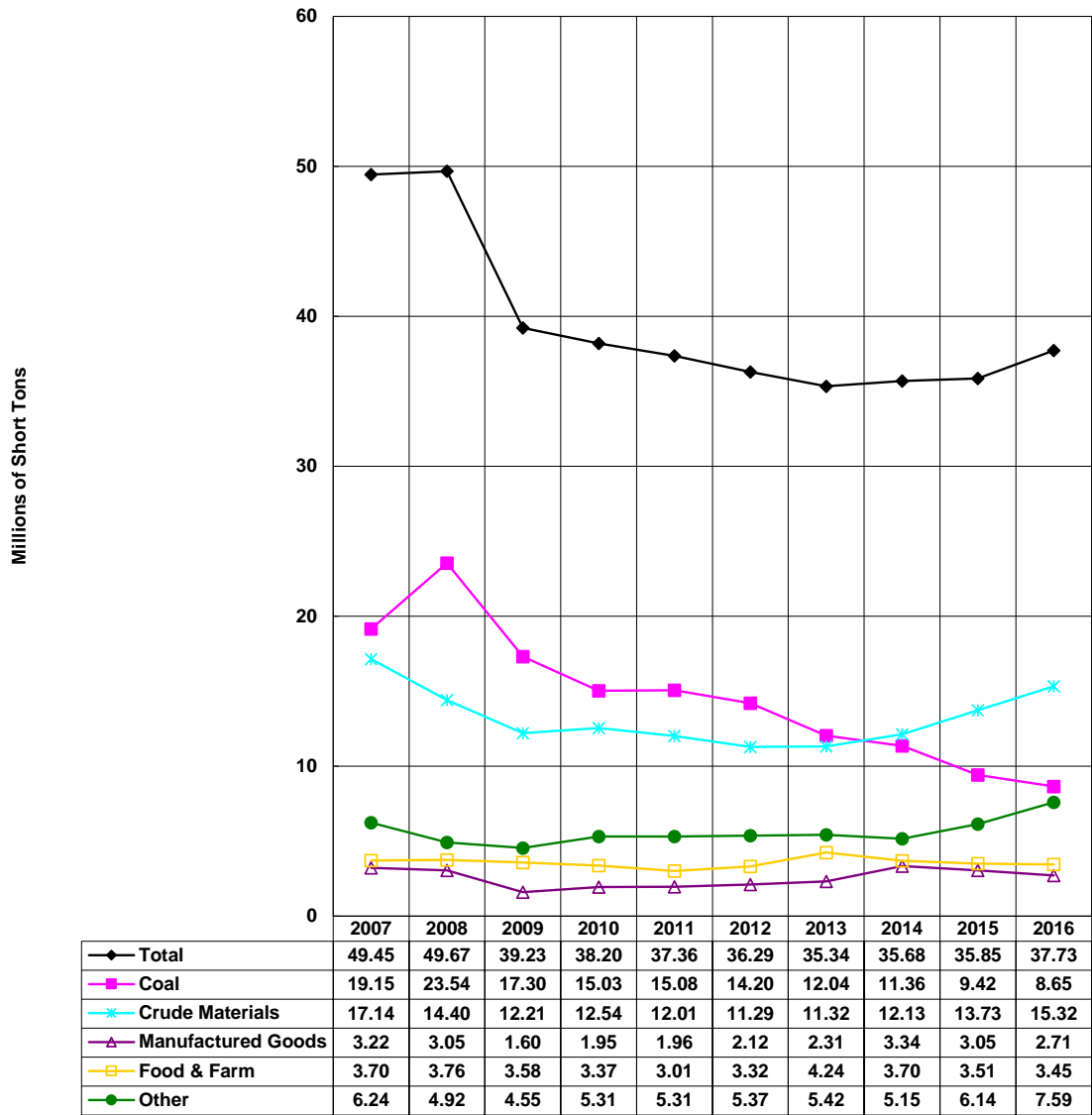
Snake River - Downbound
2007-2016, Millions of Short Tons, By Commodity



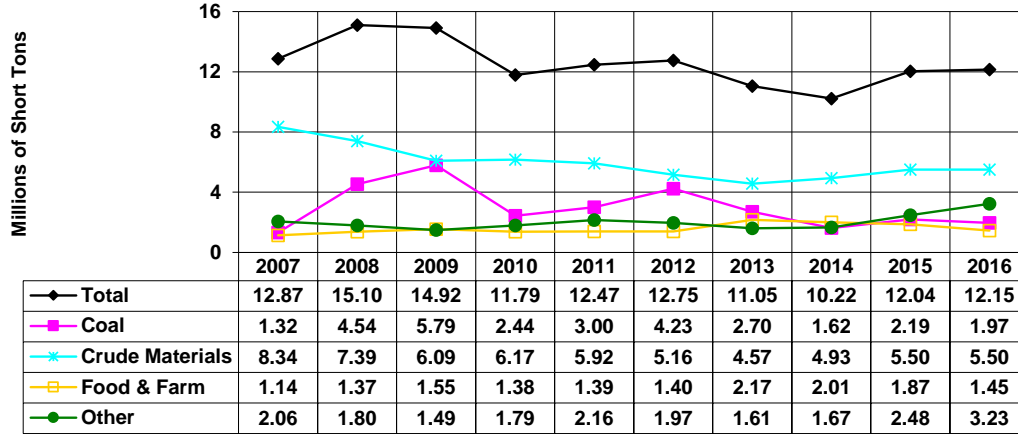
Snake River - Upbound
2007-2016, Millions of Short Tons, By Commodity



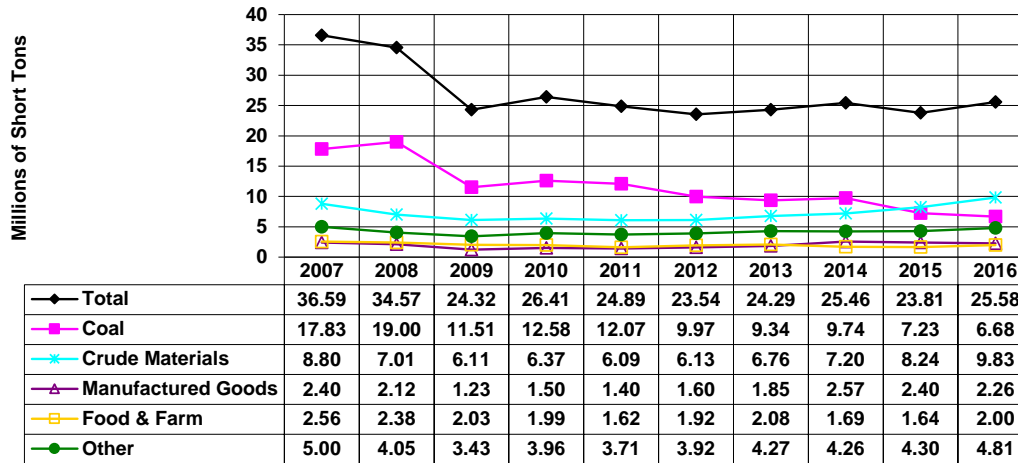
Tennessee River - Totals
2007-2016, Millions of Short Tons, By Commodity



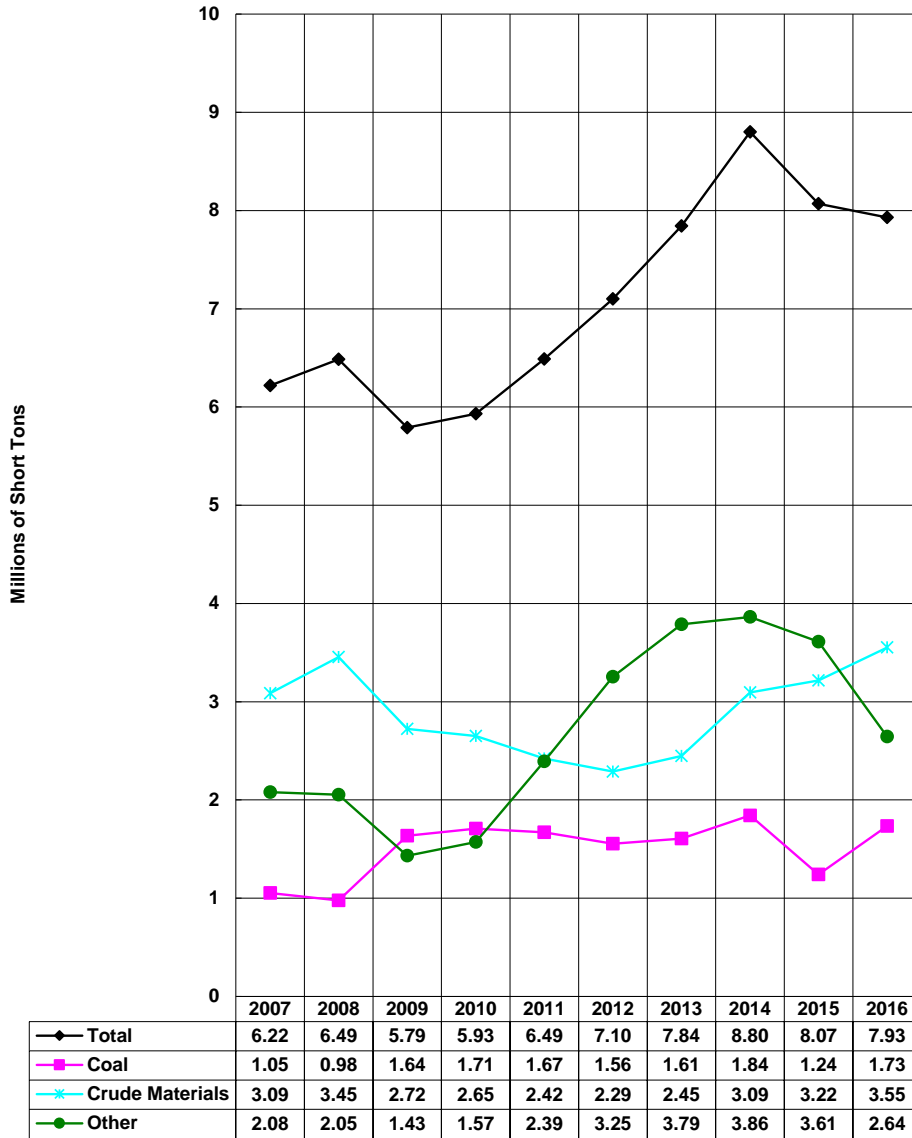
Tennessee River - Downbound 2007-2016, Millions of Short Tons, By Commodity



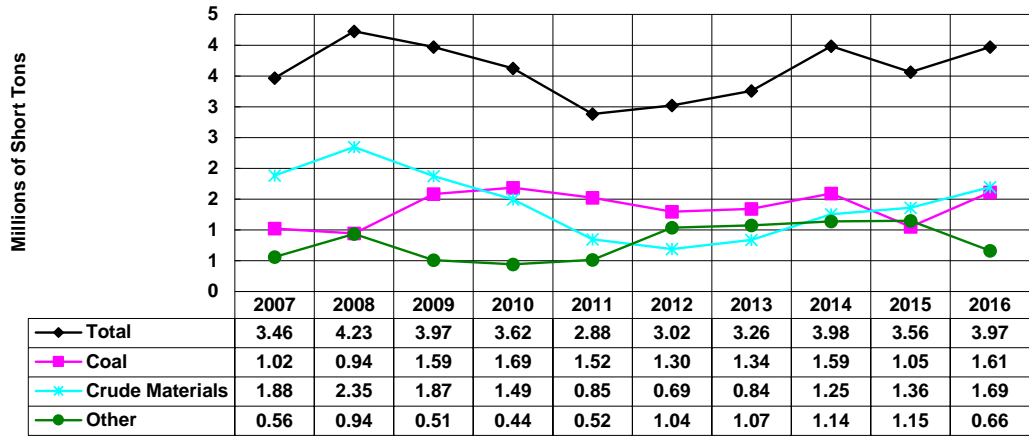
Tennessee River - Upbound 2007-2016, Millions of Short Tons, By Commodity



Tennessee-Tombigbee Waterway - Totals
 2007-2016, Millions of Short Tons, By Commodity



Tennessee - Tombigbee Waterway
Southbound, 2007-2016, Millions of Short Tons, By Commodity



Tennessee - Tombigbee Waterway
Northbound, 2007-2016, Millions of Short Tons, By Commodity

